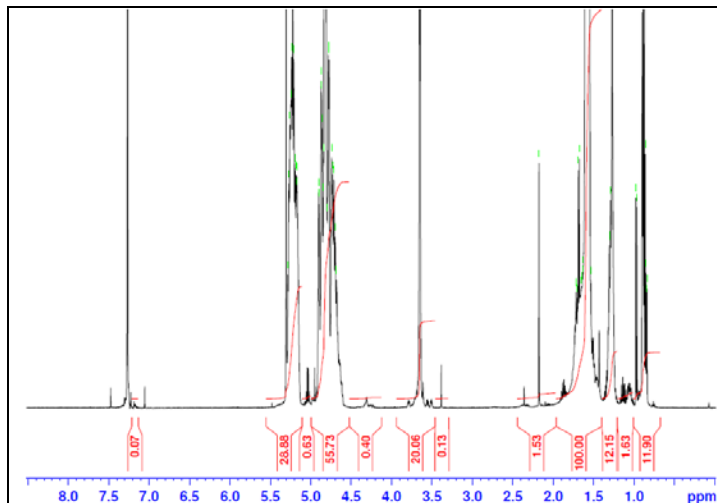
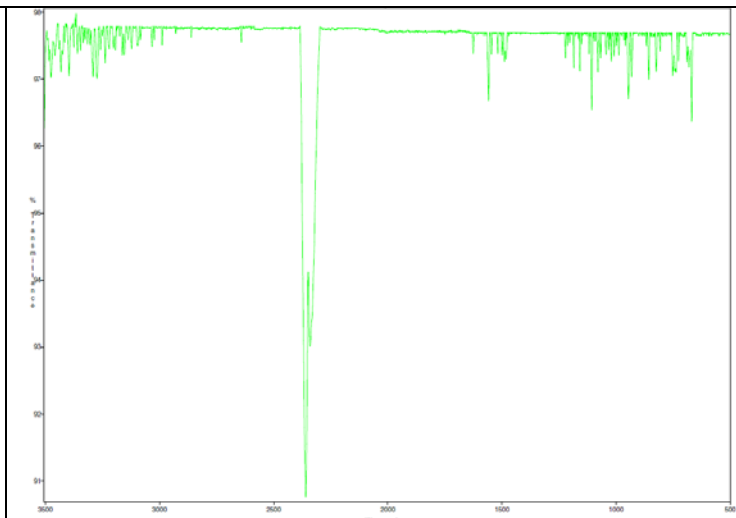


# No. AK116 Certificate of Analysis

Product Name: Methoxy Poly(ethylene glycol)-*b*-Poly(D,L-lactide-co-glycolide) copolymer  
( $M_w$  5,000:75,000 Da, 50:50 LA:GA) (Lot#: 60518DWW-A)

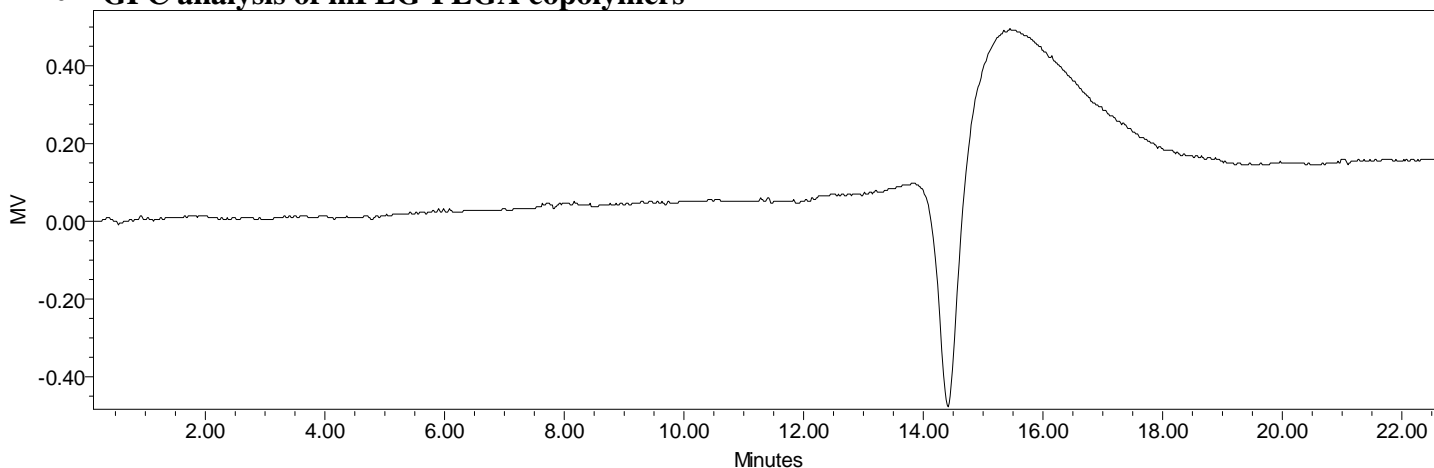


H-NMR spectrum of mPEG-PLGA copolymer in  $CDCl_3$  (Varian Inova 500 MHz instrument), NMR of mPEG-PLGA repeat units: EG-LA/GA = 106-610/589  $M_N = 4670-43,951/34,184$ , LA/GA ratio = 56%/44% (w/w), 51%/49% (mole/mole)



FTIR Analysis: Collected from cast-film on KBr salt-plate placed in Satellite FTIR (Thermo-Mattson) and analyzed in transmission mode.

## • GPC analysis of mPEG-PLGA copolymers

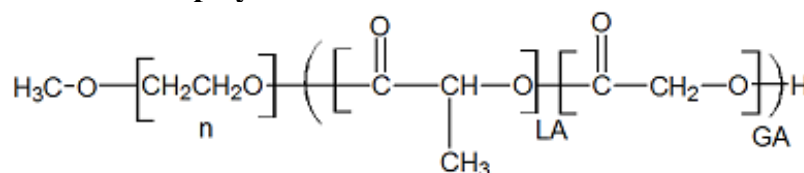


Analysis Method: Waters Breeze 2 system with 1 ml/min DCM flow across three Phenogel 5um columns (Phenomenex). Detection via refractive index, calibrated against polystyrene standards.

Polymer	$M_n$ (from GPC)	$M_w$ (from GPC)	PDI
mPEG-PLGA	67,650	74,286	1.10
mPEG5000 initiator*	4,677	5,272	1.13

\*calibrated against PEG standards

## • Structure of mPEG-PLGA copolymers



Material provided for research use only. Not for human use.