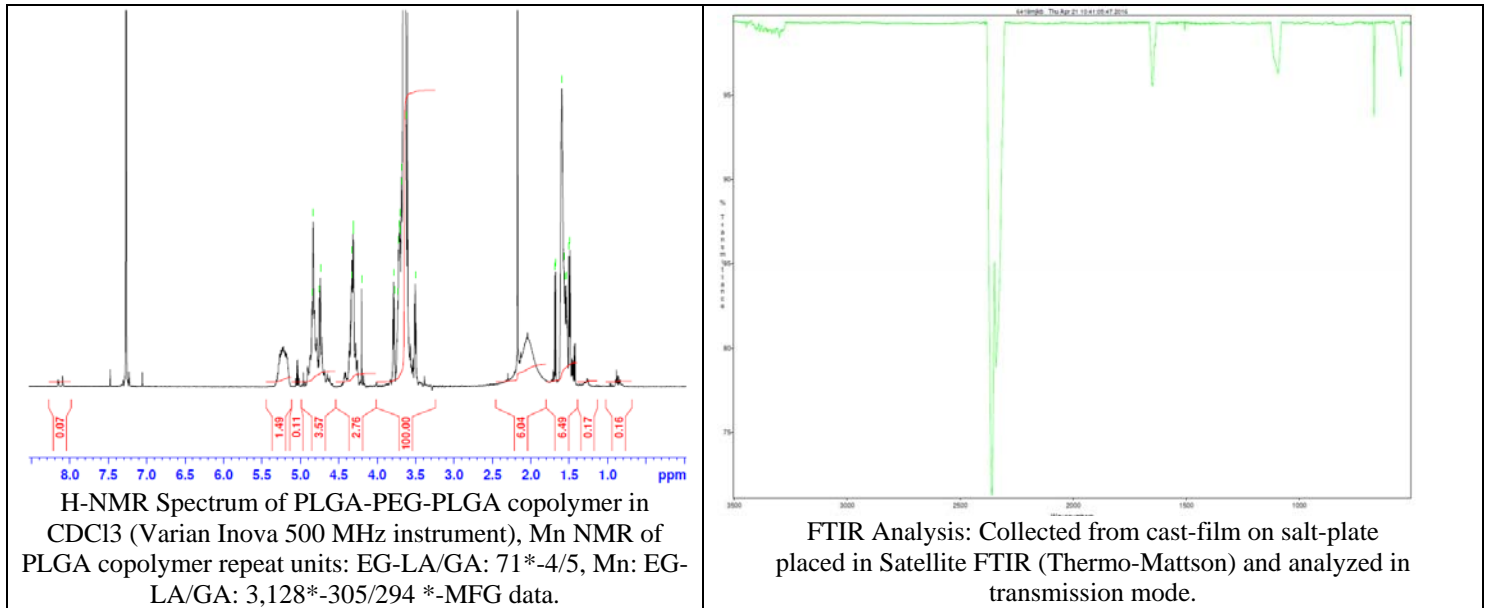
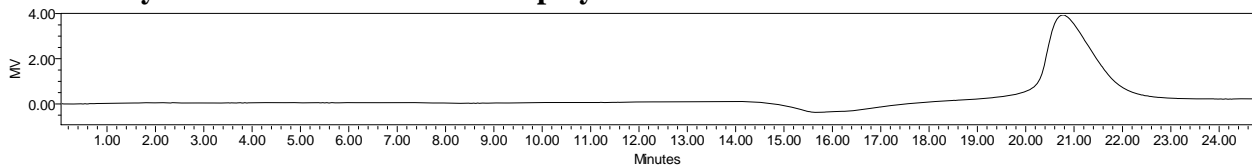


No. AK114 Certificate of Analysis

Product Name: Poly(lactic-co-glycolic acid)-*b*-Poly(ethylene glycol)-*b*-Poly(lactic-co-glycolic acid) copolymers, M_w : 400:3,000:400 Da , Lot# 60419MJK-B



- GPC analysis of PLGA-PEG-PLGA copolymer**

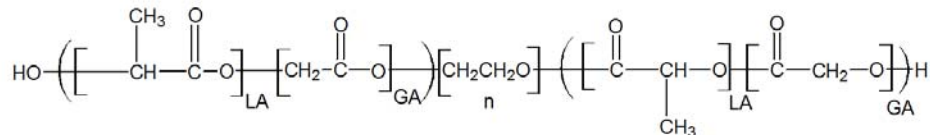


Analysis Method: Waters Breeze 2 system with 1 ml/min DCM flow across three Phenogel 5um columns (Phenomenex). Detection via refractive index, calibrated against polystyrene standards.

Polymer	M_n (GPC)	M_w (GPC)	PDI
PLGA-PEG-PLGA	5,198	8,437	1.62
PEG Precursor*	3,123	3,513	1.12

*MFG PROVIDED DATA

- Structure of PLGA-PEG-PLGA copolymer**



Material provided for research use only. Not for human use.

PolySciTech Division of Akina, Inc. | 3495 Kent Avenue, West Lafayette, IN 47906

765-464-0390 | www.polysciotech.com

For research use only.