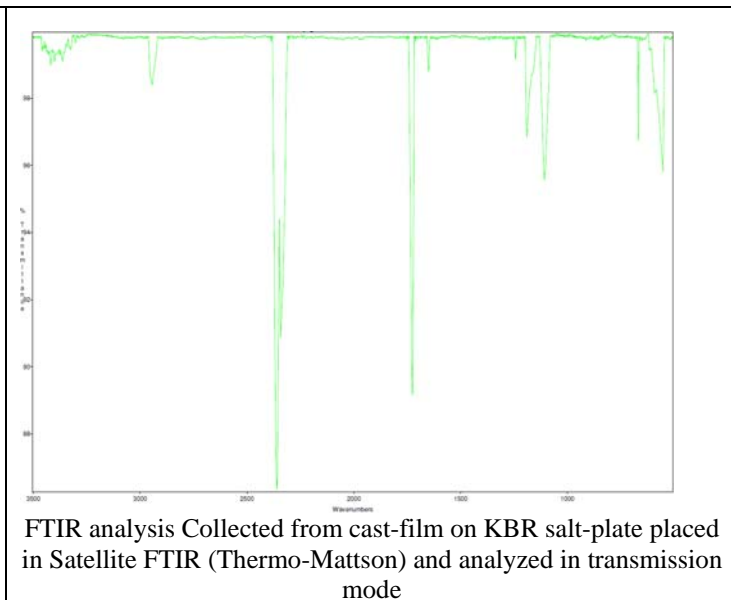
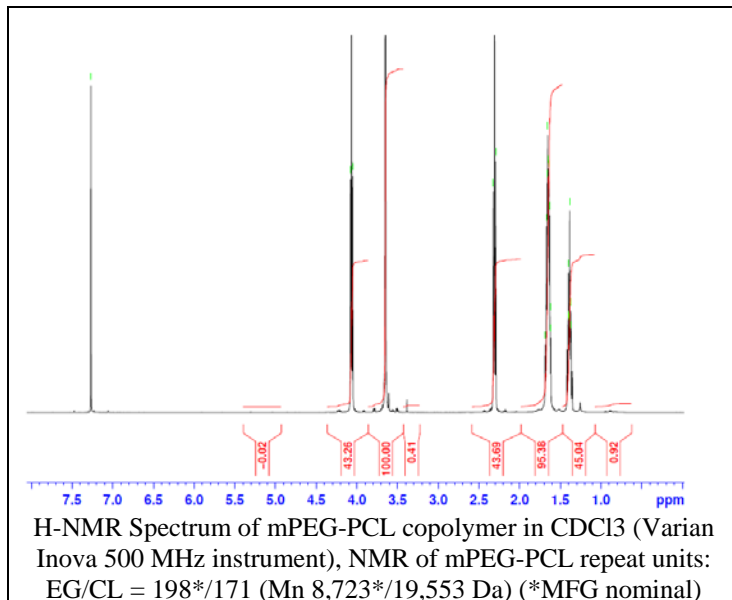
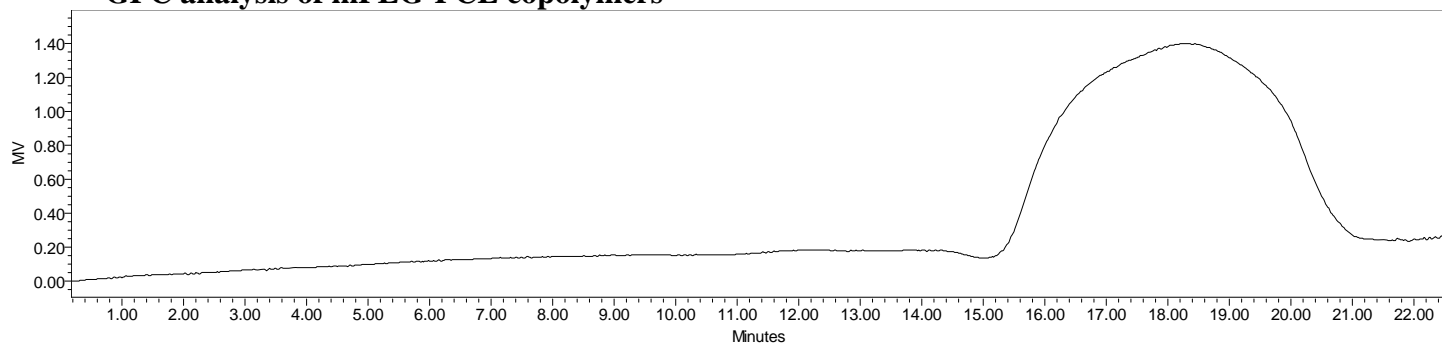


No. AK112 Certificate of Analysis

Product Name: Methoxy Poly(ethylene glycol)-*b*-Poly(caprolactone) ($M_w \sim 10,000:20,000$ Da)
(Lot#: 60318ELH-B)



• GPC analysis of mPEG-PCL copolymers

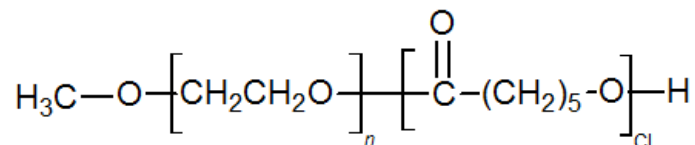


Analysis Method: Waters Breeze 2 system with 1 ml/min DCM flow across three Phenogel 5um columns (Phenomenex). Detection via refractive index, calibrated against polystyrene standards.

Polymer	M _n (from GPC)	M _w (from GPC)	PDI
mPEG-PCL	20,921	38,195	1.83
mPEG 10,000 initiator*	M _n -8719*		1.1

*Manufacturer data

• Structure of mPEG-PCL copolymers



Material provided for research use only. Not for human use.