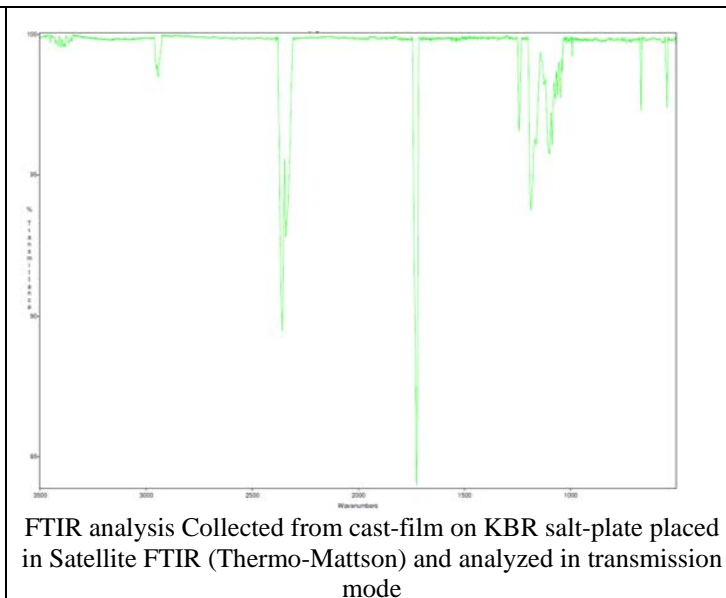
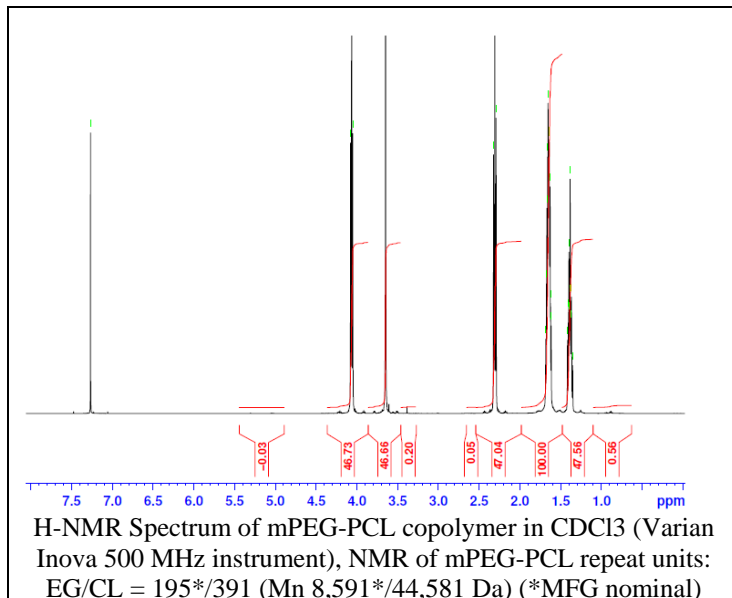


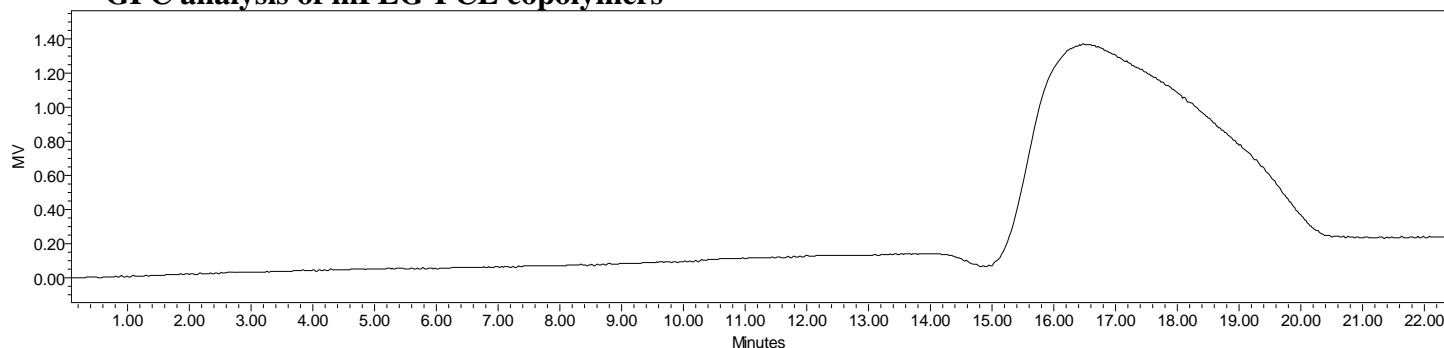
No. AK111 Certificate of Analysis



Product Name: Methoxy Poly(ethylene glycol)-*b*-Poly(caprolactone) ($M_w \sim 10,000:40,000$ Da)
 (Lot#: 60318ELH-A)



• GPC analysis of mPEG-PCL copolymers

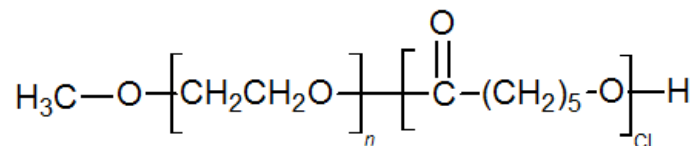


Analysis Method: Waters Breeze 2 system with 1 ml/min DCM flow across three Phenogel 5um columns (Phenomenex). Detection via refractive index, calibrated against polystyrene standards.

Polymer	M_n (from GPC)	M_w (from GPC)	PDI
mPEG-PCL	32,069	55,004	1.72
mPEG 10,000 initiator*	M_n -8567*		1.1

*Manufacturer data

• Structure of mPEG-PCL copolymers



Material provided for research use only. Not for human use.

PolySciTech Division of Akina, Inc. | 3495 Kent Avenue, West Lafayette, IN 47906
 765-464-0390 | www.polysciotech.com

For research use only.