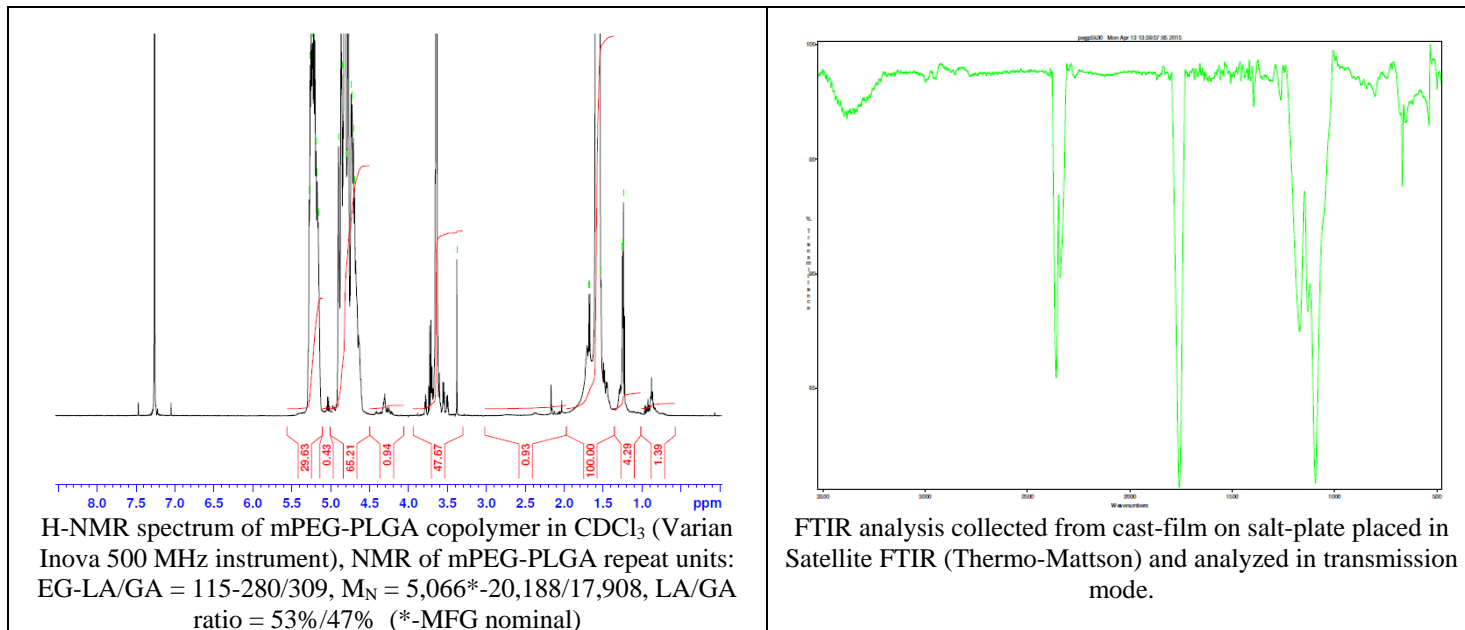
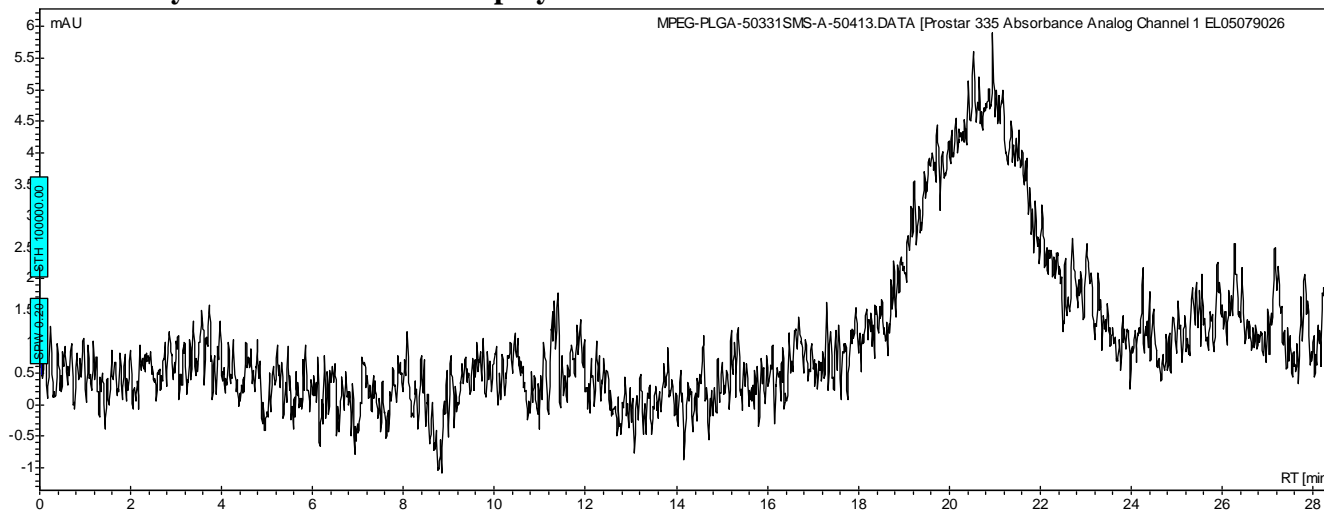


No. AK102 Certificate of Analysis

Product Name: Methoxy Poly(ethylene glycol)-*b*-Poly(D,L-lactic-co-glycolic) acid copolymer (M_w 5,000:30,000 Da, 50:50 LA:GA) (Lot#: 50331SMS)



• GPC analysis of mPEG-PLGA copolymers

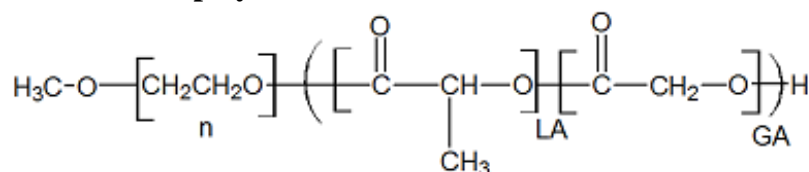


Analysis Method: Varian Prostar system with 1 ml/min DCM flow across two 5 μm Phenogel columns and one Resipore column (Agilent). Detection via UV/Vis, calibrated against polystyrene standards.

Polymer	M _n (from GPC)	M _w (from GPC)	PDI
mPEG-PLGA	17,325	38,552	2.23
mPEG 5000 initiator*	5,488	5,847	1.06

*calibrated against PEG standards

• Structure of mPEG-PLGA copolymers



Material provided for research use only. Not for human use.