

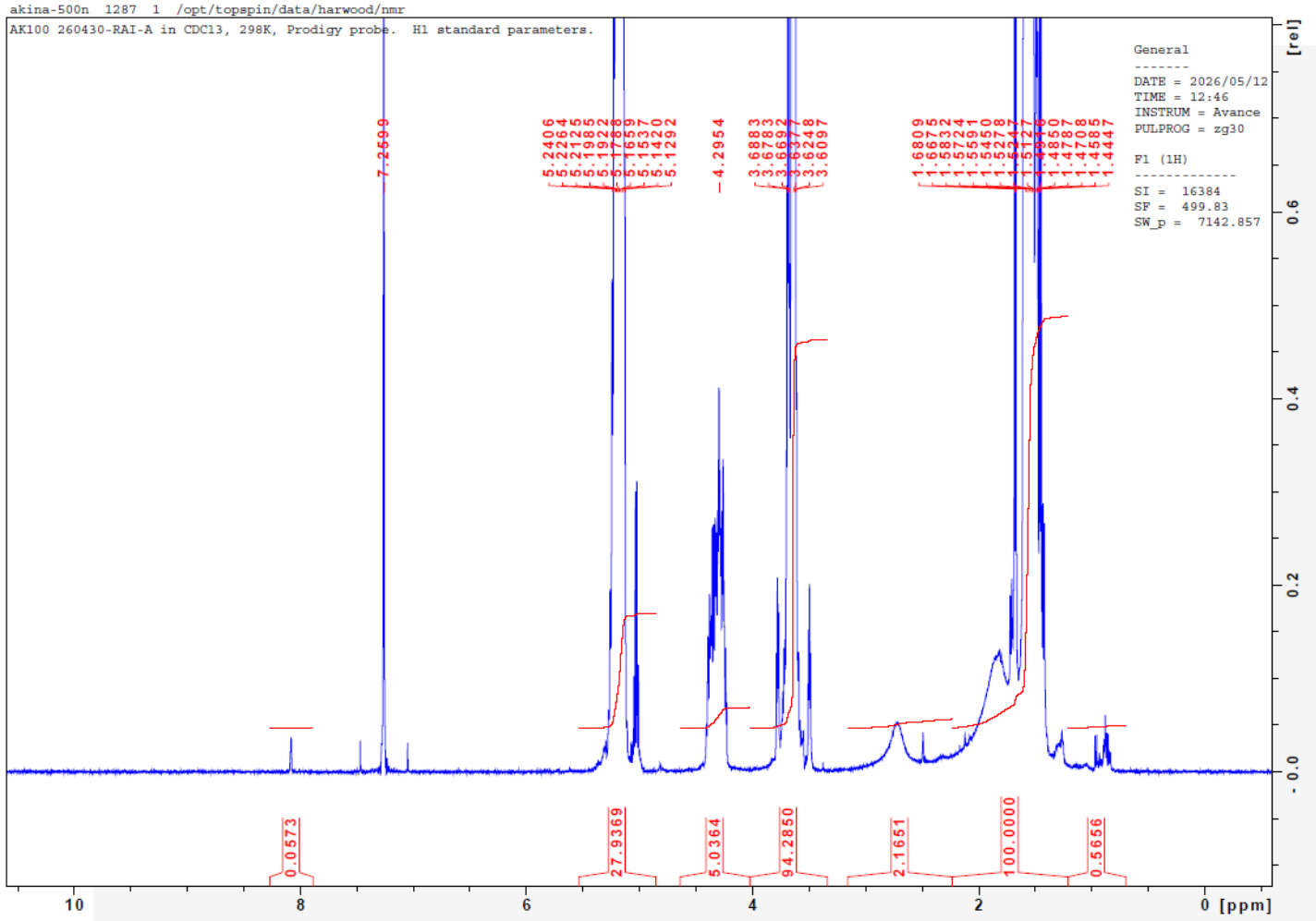
No. AK100

Certificate of Analysis

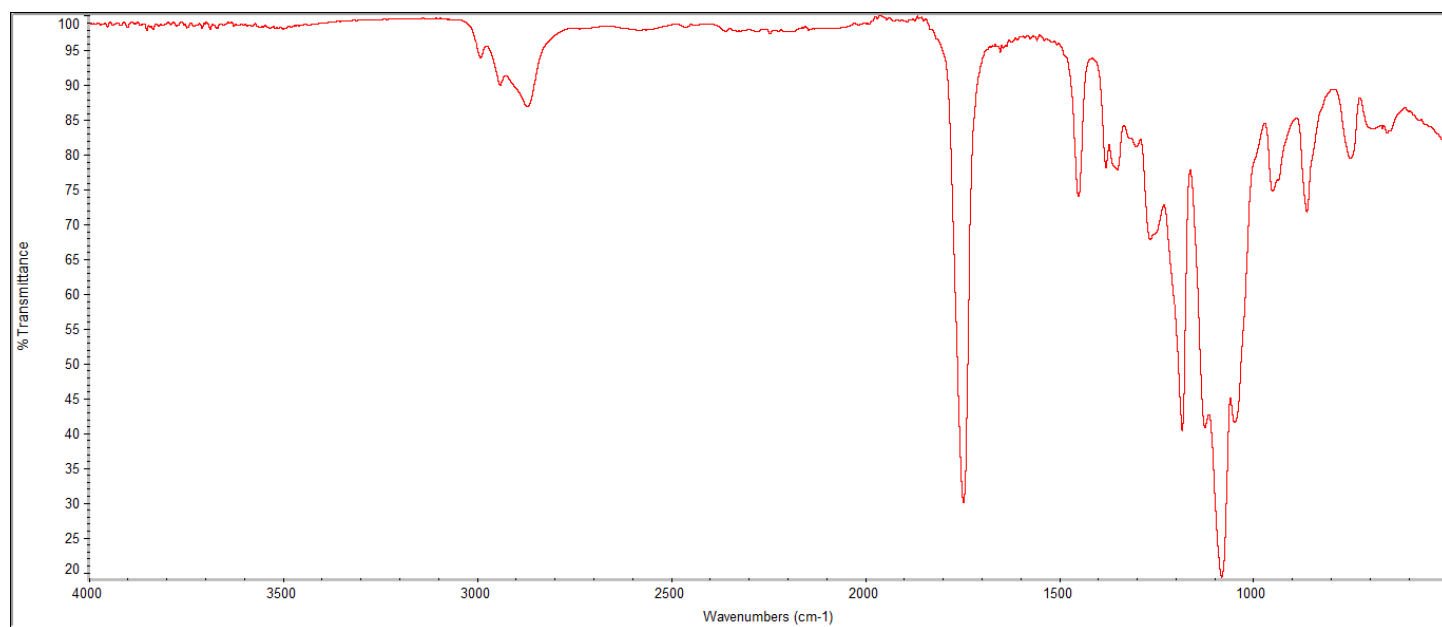


Product Name: Poly(DL-lactide)-*b*-Poly(ethylene glycol)-*b*-Poly(DL-lactide) triblock copolymers (Mw ~ 1,700:1,500:1,700) (Lot#: 260430RAI-A)

H-NMR

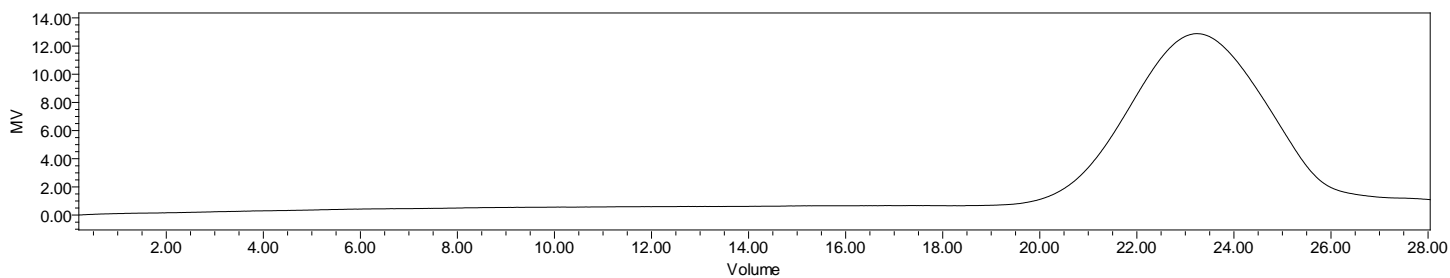


FTIR



FTIR Analysis: Collected from IS5 ID7-ATR spectrometer (Thermo Scientific) and analyzed in transmission mode.

GPC-ES



Polymer	M _n (from GPC)	M _w (from GPC)	PDI
PLA-PEG-PLA	5230	6817	1.30
PEG-Precursor*		1472*	

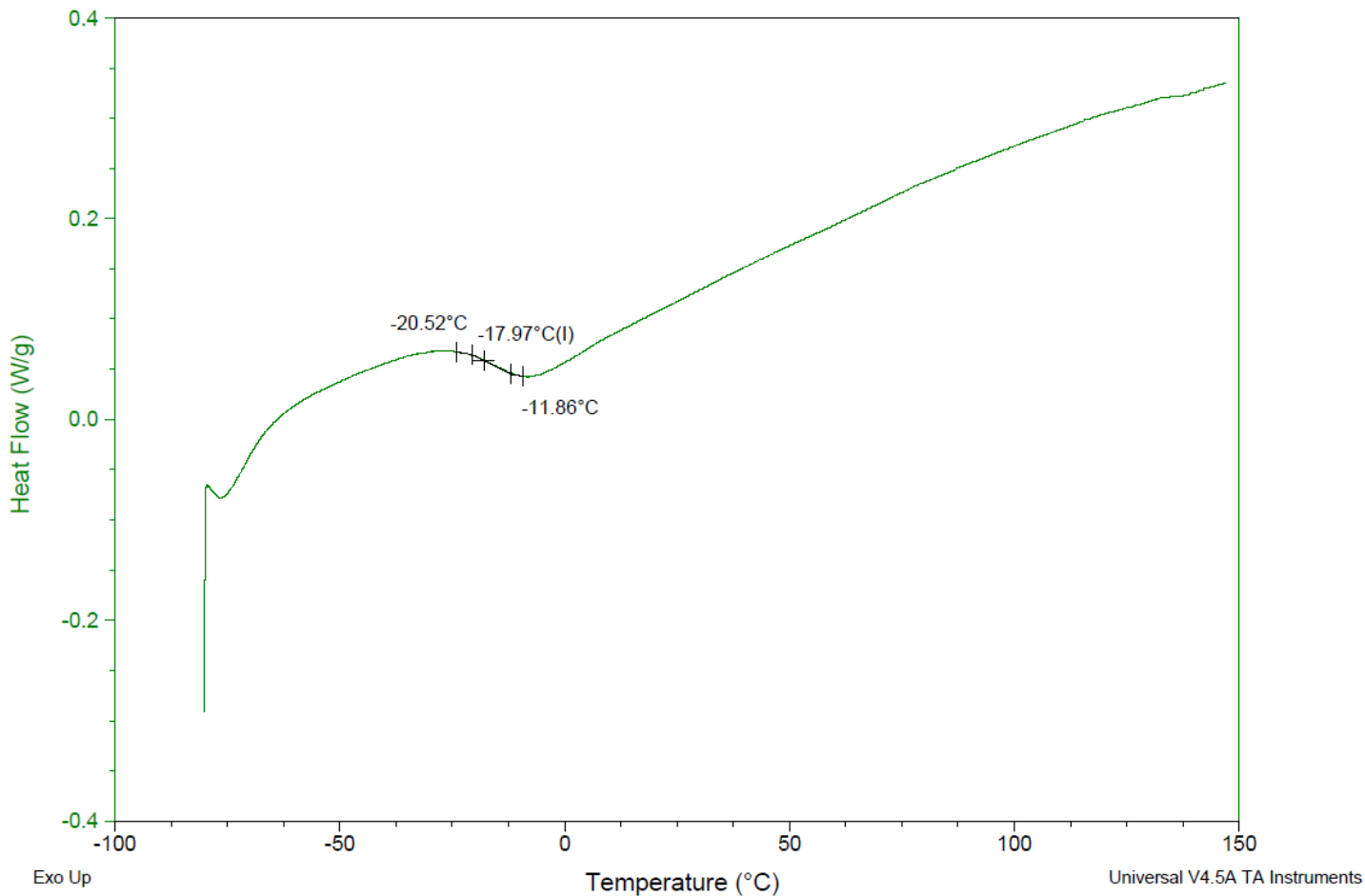
GPC-ES Analysis Method: Waters Breeze 2 system with 1 ml/min THF flow across three GPC columns. Detection via refractive index, calibrated against polystyrene standards. *- from MFG data

DSC

Sample: AK100 260430RAI-A
Size: 4.6000 mg
Method: Ramp

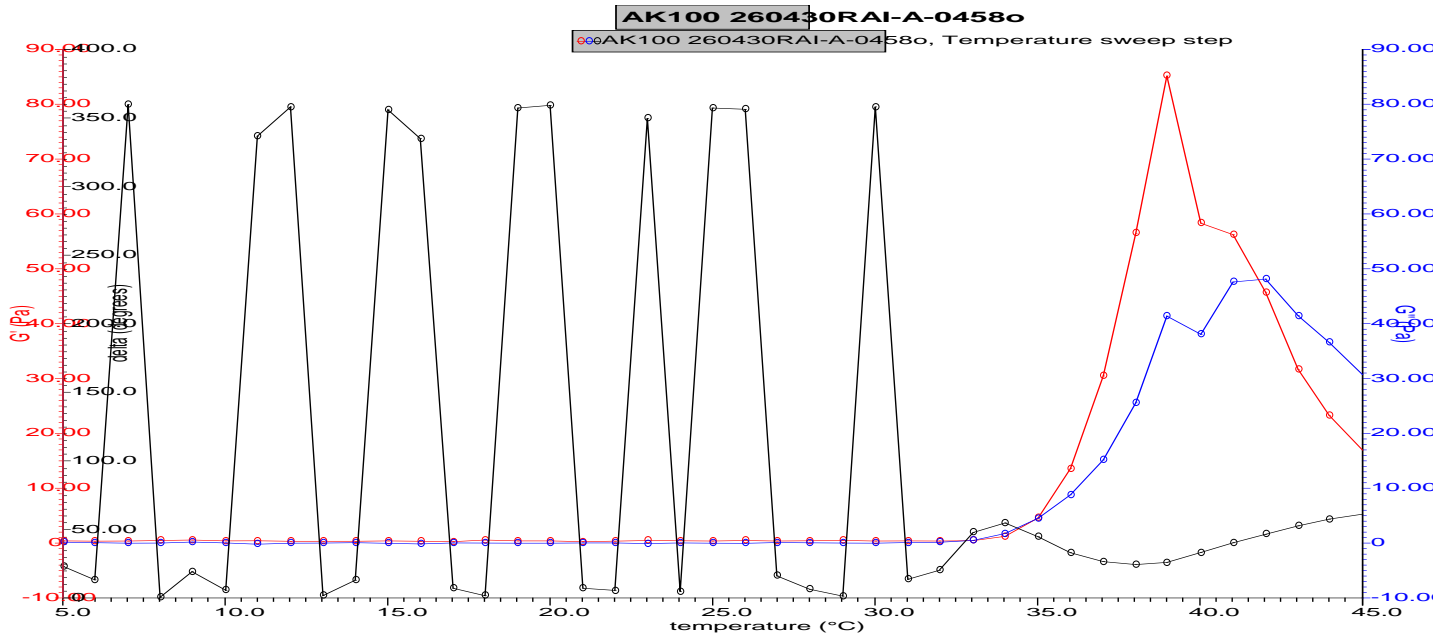
DSC

File: C:\...\COA\AK100 260430RAI-A.001
Run Date: 07-May-2026 13:17
Instrument: DSC Q2000 V24.11 Build 124



DSC Testing: 1-5 mg sample tested in crimped aluminum pan on a TA Instruments Model Q2000 with procedure equilibraion 100 °C, isothermal 5 minutes, equilibrate -80 °C, data on, ramp 10 °C/min to 150 °C. Tg = -17.97 °C

RHEOLOGY



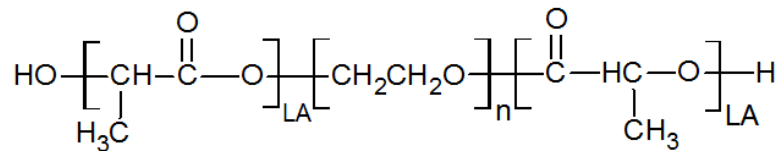
Rheology performed on AR2000 (TA instruments) with 60mm 2degree cone on 20% w/v polymer in water dissolved over 24 hours with stirring at 23°C. Viscosity of solution at 0.1 (sec⁻¹) and 5°C was measured (1 minute peak hold 5 second test intervals). Rheology performed by oscillating at constant 6.283 rad/s, 0.1% strain, in increments of 1°C ranging from 5-45°C with 1 minutes of temperature equilibration at each point.

Viscosity 20% w/v solution at 5°C	0.04288 Pa/s
-----------------------------------	-------------------------------

IV

Inherent Viscosity: 0.076 ± .009 dL/g (calculated from kinematic viscosity at 2% w/v Acetone on Rheosense microVISC, n=3) at 25°C.

Structure of copolymers



Approved By:
Amie Tyler
Quality Manager