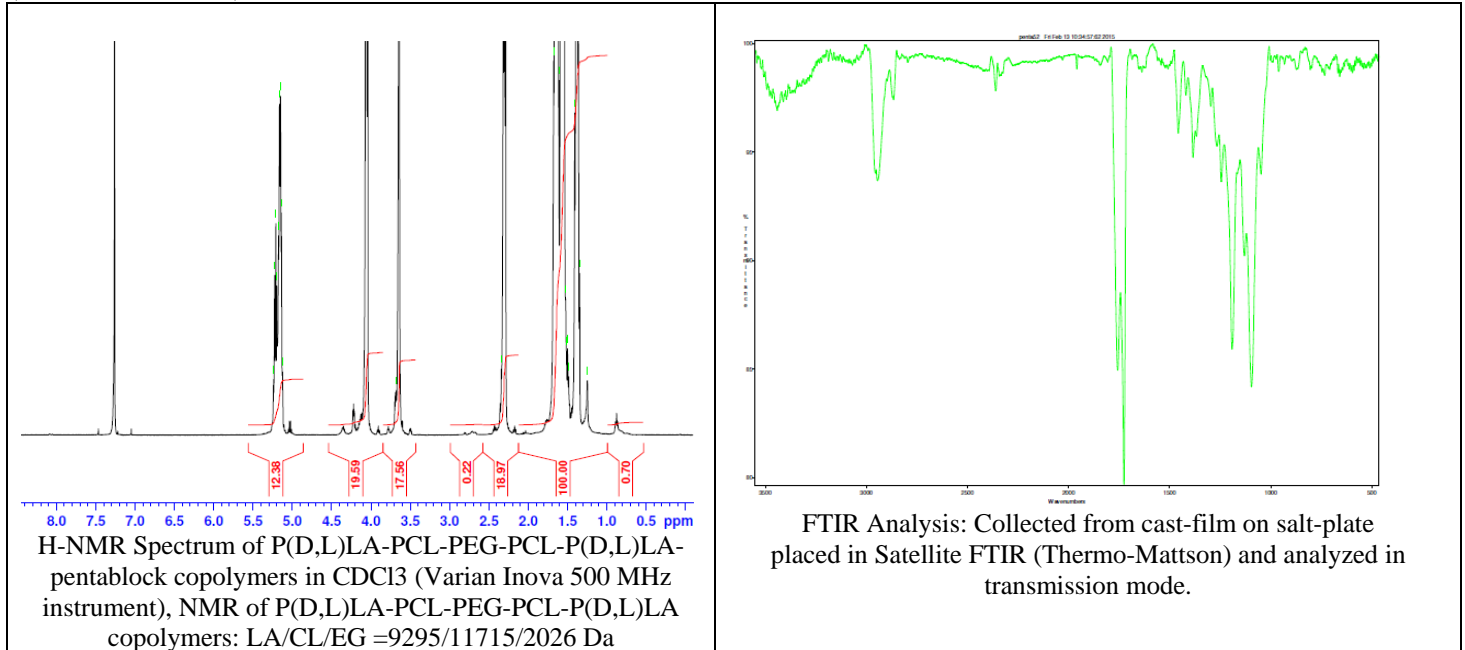
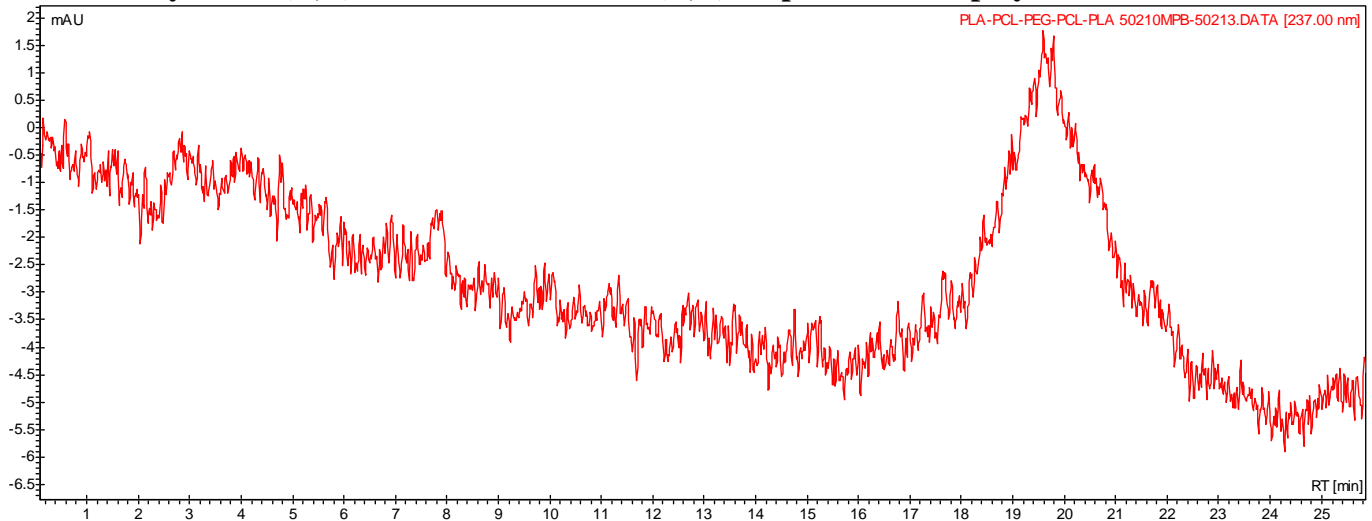


No. AK99 Certificate of Analysis

Product Name: Poly(D,L)lactide-b-Polycaprolactone-b-Poly(ethylene glycol)-b-Polycaprolactone-b-Poly(D,L)lactide (MW ~ 5,000-5,000-2,000-5,000-5,000 Da)
(Lot #50210MPB)



- GPC analysis of P(D,L)LA-PCL-PEG-PCL-P(D,L)LA pentablock copolymers**

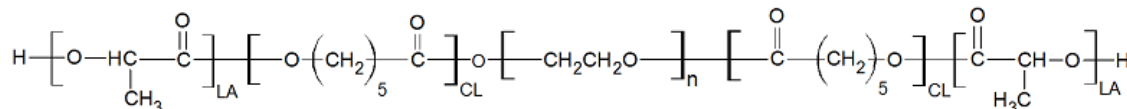


Analysis Method: Varian Prostar system with 1 ml/min DCM flow across two Phenogel 5 μm columns and one Resipore column (Agilent). Detection via UV/Vis, calibrated against polystyrene standards.

Polymer	Mn (from GPC)	Mw (from GPC)	PDI
P(D,L)LA-PCL-PEG-PCL-P(D,L)LA	21,028	32,867	1.56
PEG Precursor*	2,179	2,205	1.01

*Calibrated against PEG standards

- Structure of P(D,L)LA-PCL-PEG-PCL-P(D,L)LA pentablock copolymers**



Material provided for research use only. Not for human use.

PolySciTech Division of Akina, Inc. | 3495 Kent Avenue, West Lafayette, IN 47906

765-464-0390 | www.polysciotech.com

For research use only.