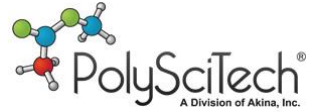
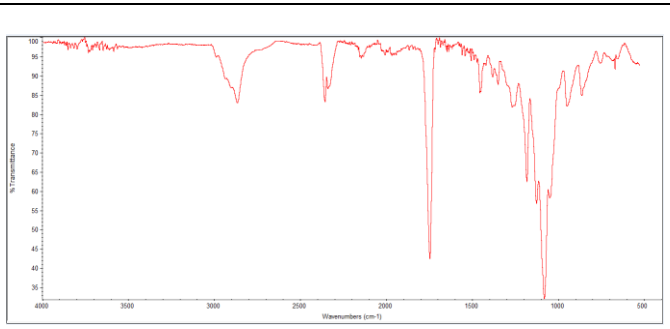
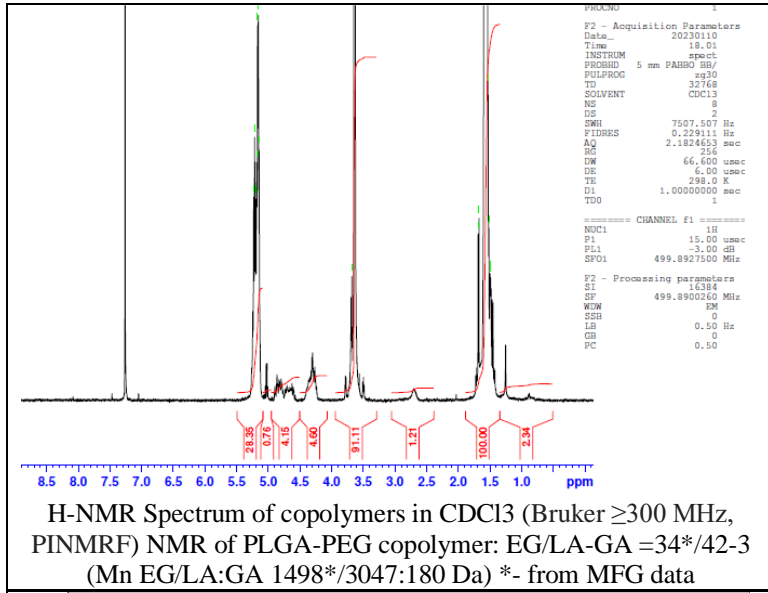


# No. AK097

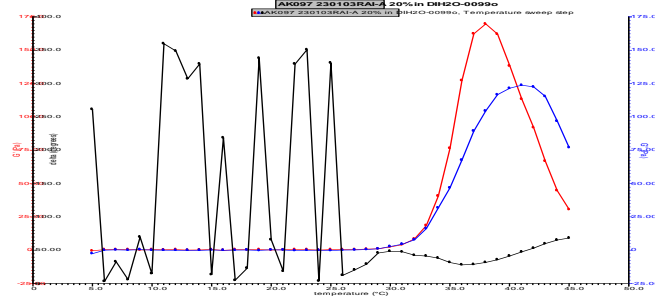
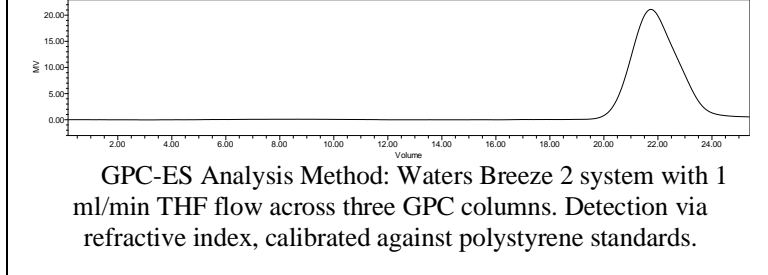
# Certificate of Analysis



Product Name: Poly(lactide-co-glycolide)-b-Poly(ethylene glycol)-b-Poly(lactide-co-glycolide) 1700-1500-1700Da (LA:GA 15:1 (94%/6% LA/GA) (w:w))  
Lot #230103RAI-A



FTIR Analysis: Collected from Nicolet Avatar 380 spectrometer with ATR Smart Orbit and analyzed in transmission mode.



Rheology performed on AR2000 (TA instruments) with 60mm 2degree cone on 20% w/v polymer in water dissolved over 3 days with stirring at room temperature. Viscosity of solution at 0.1 (sec<sup>-1</sup>) and 5°C was measured (1minute peak hold 5 second test intervals). Rheology performed by oscillating at constant 6.283 rad/s, 0.1% strain, in increments of 1°C ranging from 5-45°C with 1 minutes of temperature equilibration at each point.

Polymer	M <sub>n</sub> (from GPC)	M <sub>w</sub> (from GPC)	PDI
PLGA-PEG-PLGA	5699	7379	1.29
PEG precursor*		1485*	

\*- from MFG data

Viscosity 20% w/v solution at 5°C **0.05452 Pa/s**

## Structure of PLGA-PEG-PLGA

