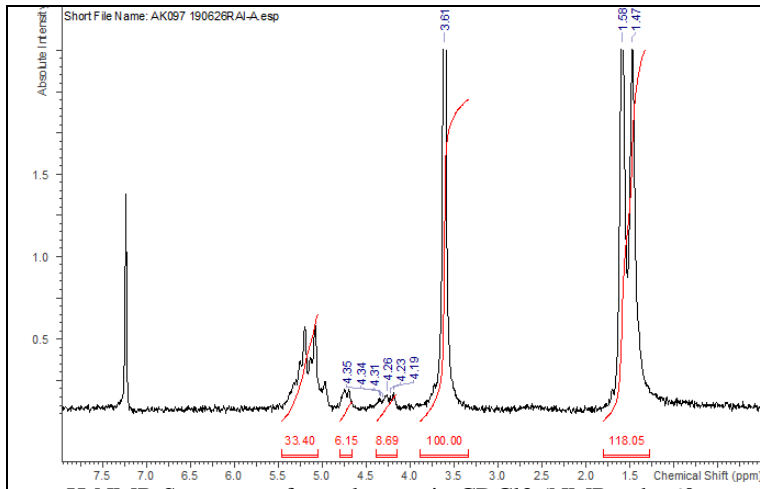


No. AK097

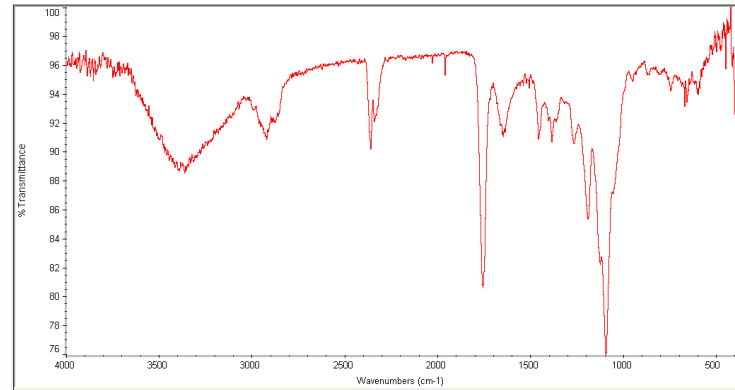
Certificate of Analysis



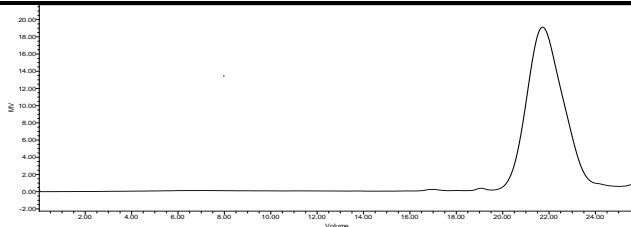
Product Name: Poly(lactide-co-glycolide)-b-Poly(ethylene glycol)-b-Poly(lactide-co-glycolide) 1700-1500-1700Da (LA:GA 15:1 (94%/6% LA/GA) (w:w))
Lot #190626RAI-A



H-NMR Spectrum of copolymers in CDCl₃ (NMReady-60e, Nanalysis 60 MHz) NMR of PLGA-PEG copolymer: EG/LA-GA =34/45-4 (Mn EG/LA:GA1498*/3271:243)



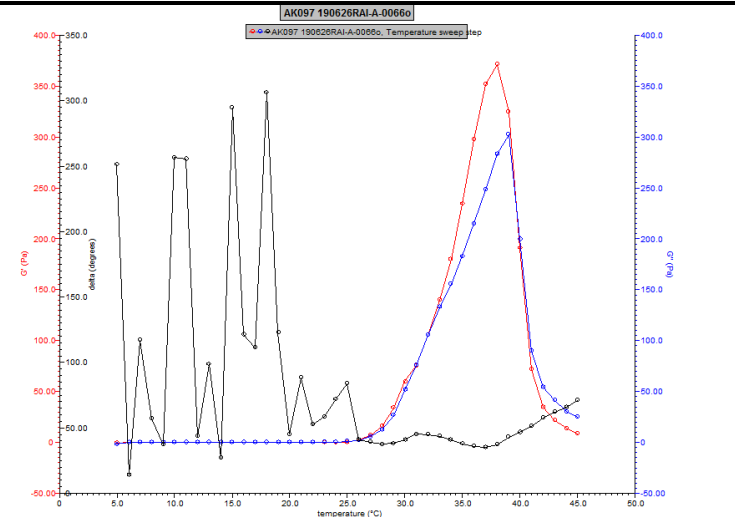
FTIR Analysis: Collected from cast-film on KBr salt-plate placed in Nicolet Avatar 320 spectrometer and analyzed in transmission mode.



GPC Analysis Method: Waters Breeze 2 system with 1 ml/min THF flow across three GPC columns. Detection via refractive index, calibrated against polystyrene standards.

Polymer	M _n (from GPC)	M _w (from GPC)	PDI
PLGA-PEG	5525	7118	1.29
PEG precursor*		1484*	

*- from MFG data



Rheology performed on AR2000 (TA instruments) with 60mm 2degree cone on 20% w/v polymer in water dissolved over 3 days with stirring at 4°C. Viscosity of solution at 0.1 (sec⁻¹) and 5°C was measured (1minute peak hold 5 second test intervals). Rheology performed by oscillating at constant 6.283 rad/s, 0.1% strain, in increments of 1°C ranging from 5-45°C with 1 minutes of temperature equilibration at each point.

Viscosity 20% w/v solution at 5°C

.07101 Pa/s

• Structure of PLGA-PEG-PLGA

