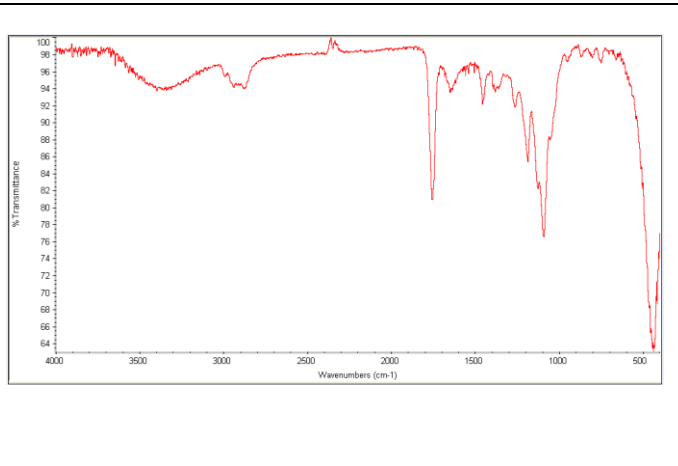
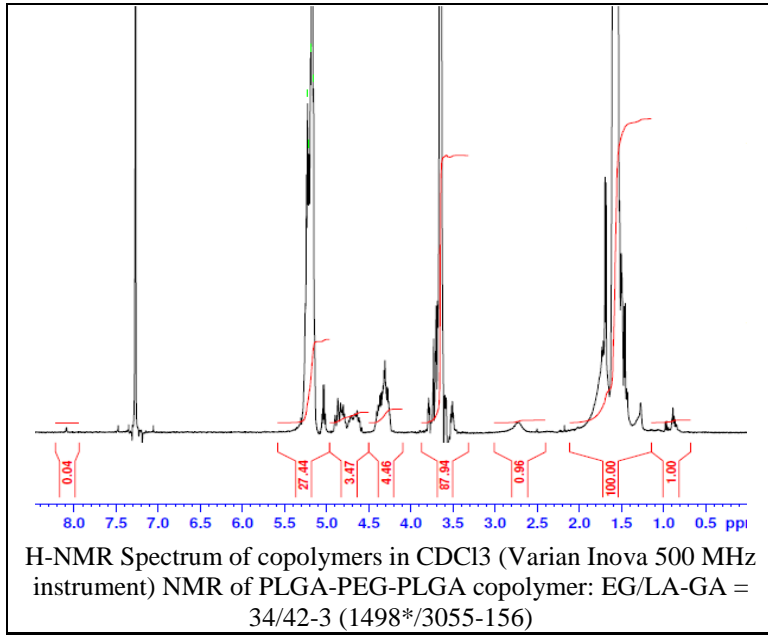


No. AK097

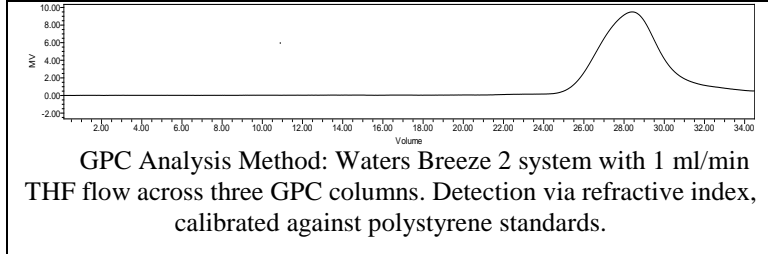
Certificate of Analysis



Product Name: Poly(lactide-co-glycolide)-b-Poly(ethylene glycol)-b-Poly(lactide-co-glycolide) 1700-1500-1700Da (LA:GA 15:1 (94%/6% LA/GA) (w:w))
Lot #180906RAI-A



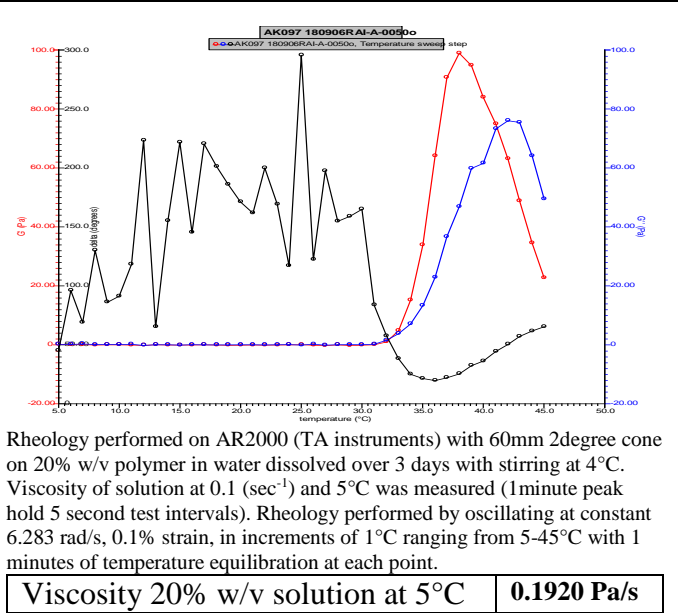
FTIR Analysis: Collected from cast-film on KBr salt-plate placed in Nicolet Avatar 320 spectrometer and analyzed in transmission mode.



GPC Analysis Method: Waters Breeze 2 system with 1 ml/min THF flow across three GPC columns. Detection via refractive index, calibrated against polystyrene standards.

Polymer	M _n (from GPC)	M _w (from GPC)	PDI
PLGA-PEG-PLGA	4540	5701	1.26
PEG*		1498*	

*- from MFG data



Viscosity 20% w/v solution at 5°C **0.1920 Pa/s**

Structure of PLGA-PEG-PLGA

