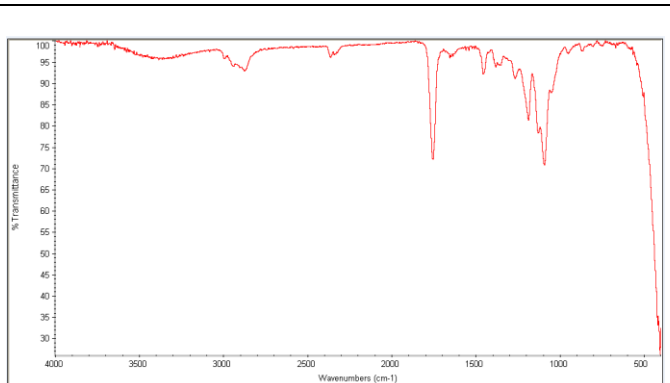
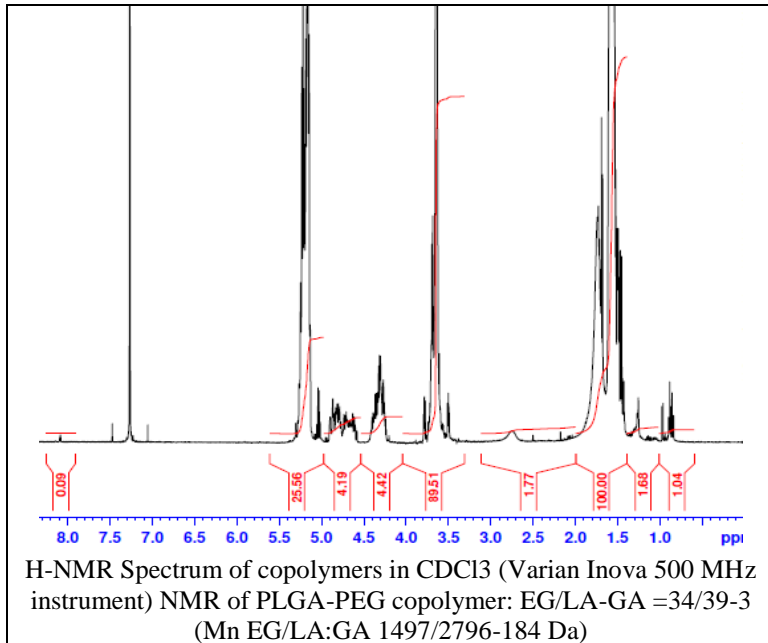


No. AK097

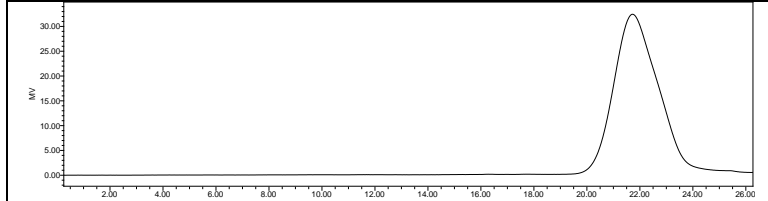
Certificate of Analysis



Product Name: Poly(lactide-co-glycolide)-b-Poly(ethylene glycol)-b-Poly(lactide-co-glycolide) 1700-1500-1700Da (LA:GA 15:1 (94%/6% LA/GA) (w:w))



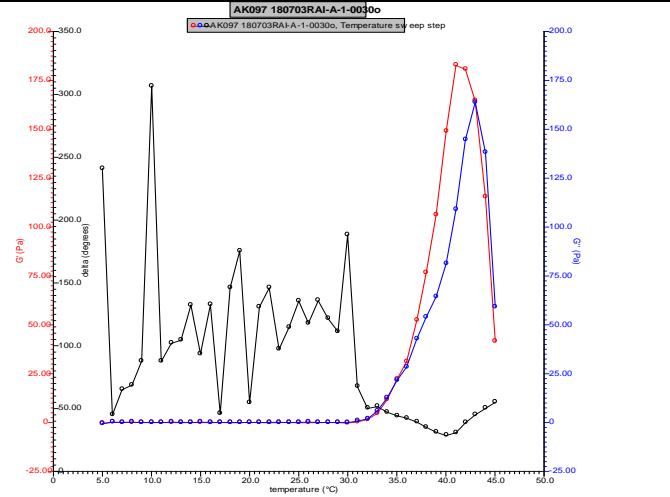
FTIR Analysis: Collected from cast-film on KBr salt-plate placed in Nicolet Avatar 320 spectrometer and analyzed in transmission mode.



GPC Analysis Method: Waters Breeze 2 system with 1 ml/min THF flow across three GPC columns. Detection via refractive index, calibrated against polystyrene standards.

Polymer	M _n (from GPC)	M _w (from GPC)	PDI
PLGA-PEG	5204	6834	1.31
PEG*		1484*	

*- from MFG data



Rheology performed on AR550 (TA instruments) with 60mm 2degree cone on 20% w/v polymer in water dissolved over 3 days with stirring at 4°C. Viscosity of solution at 0.1 (sec⁻¹) and 5°C was measured (1 minute peak hold 5 second test intervals). Rheology performed by oscillating at constant 6.283 rad/s, 0.1% strain, in increments of 1°C ranging from 5-45°C with 1 minutes of temperature equilibration at each point.

Viscosity 20% w/v solution at 5°C | **0.1037 Pa.s**

Structure of PLGA-PEG-PLGA

