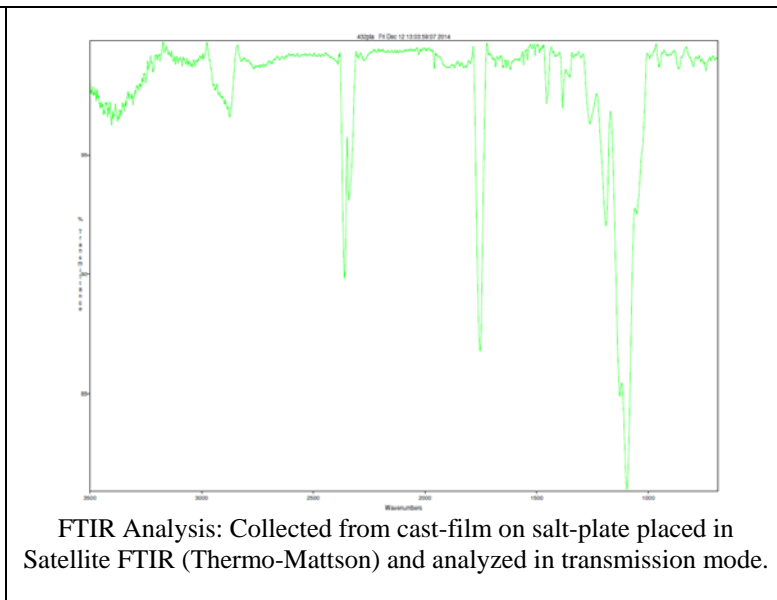
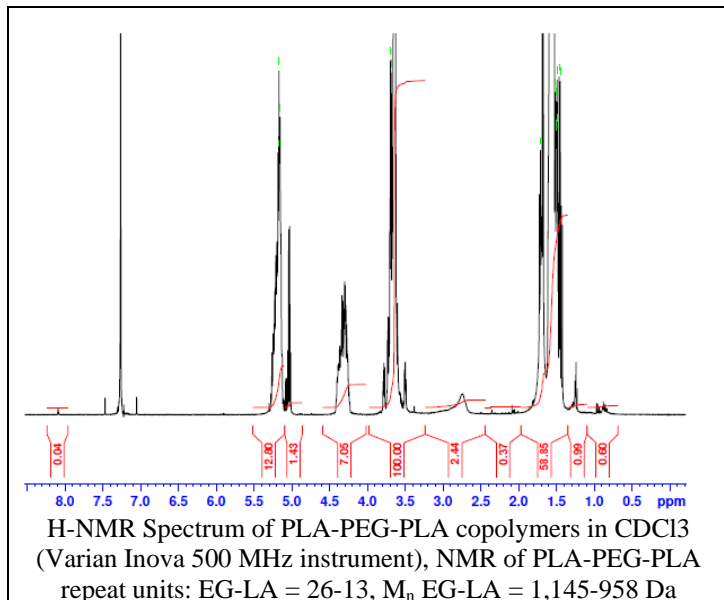
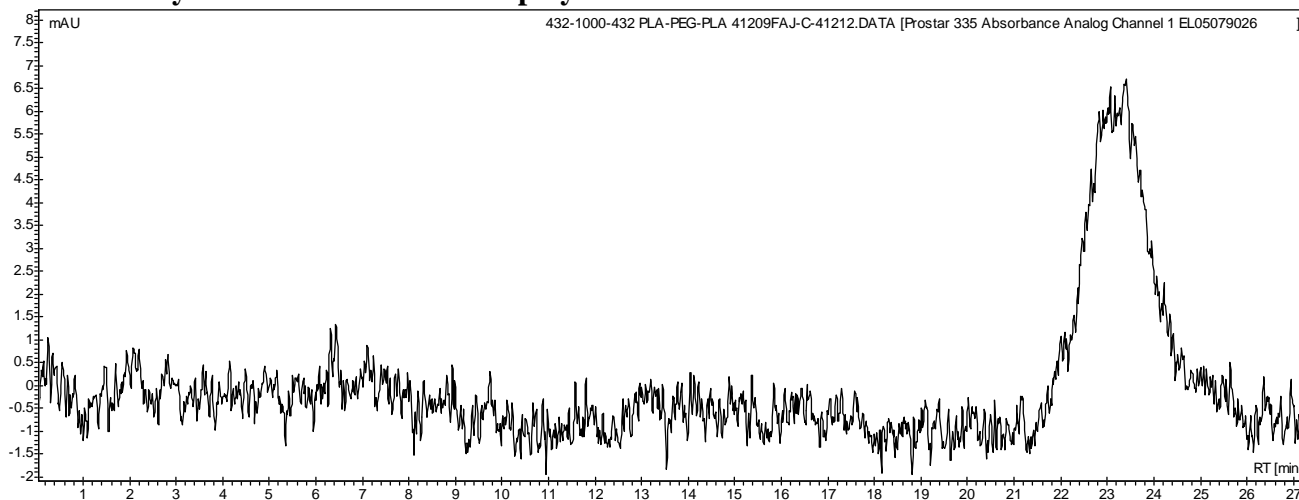


No. AK95 Certificate of Analysis

Product Name: Poly(DL-lactide)-*b*-Poly(ethylene glycol)-*b*-Poly(DL-lactide) triblock copolymers (432:1,000:432) (Lot#: 41209FAJ-C)



• GPC analysis of PLA-PEG-PLA copolymers

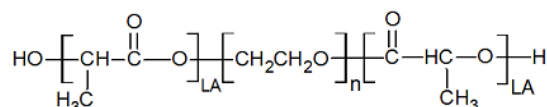


Analysis Method: Varian Prostar system with 1 ml/min DCM flow across two Phenogel 5 μm columns and one Resipore column (Agilent). Detection via UV/Vis, calibrated against polystyrene standards (*PEG standards).

Polymer	M _n (from GPC)	M _w (from GPC)	PDI
PLA-PEG-PLA	2,737	3,263	1.19
PEG1000 Initiator*	1,118	1,142	1.02

*-Run separately, chromatograph not shown.

• Structure of PLA-PEG-PLA copolymers



Material provided for research use only. Not for human use.

PolySciTech Division of Akina, Inc. | 3495 Kent Avenue, West Lafayette, IN 47906

765-464-0390 | www.polysciotech.com

For research use only.