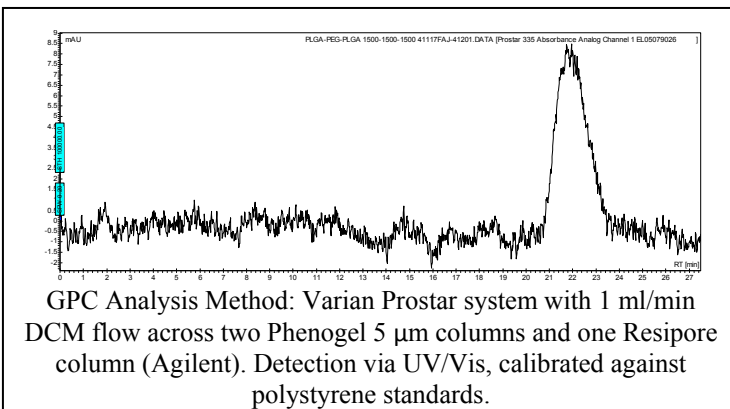
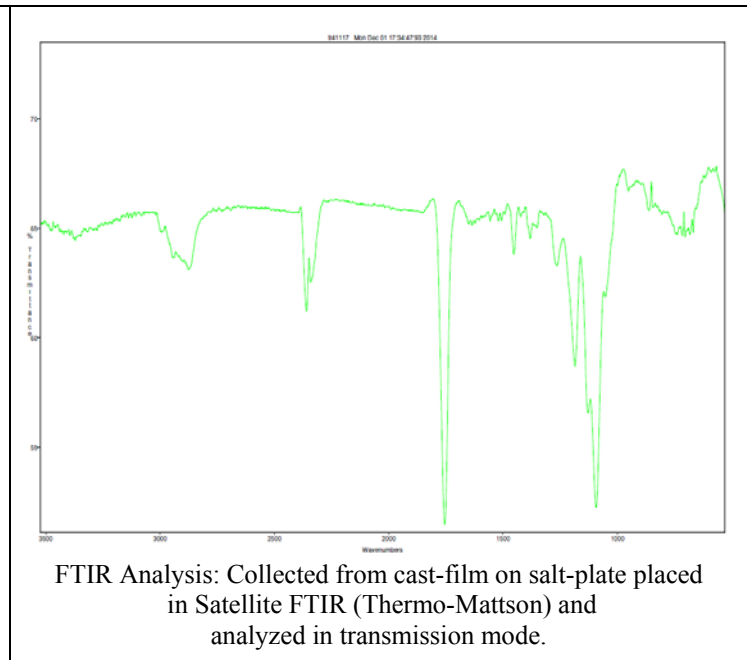
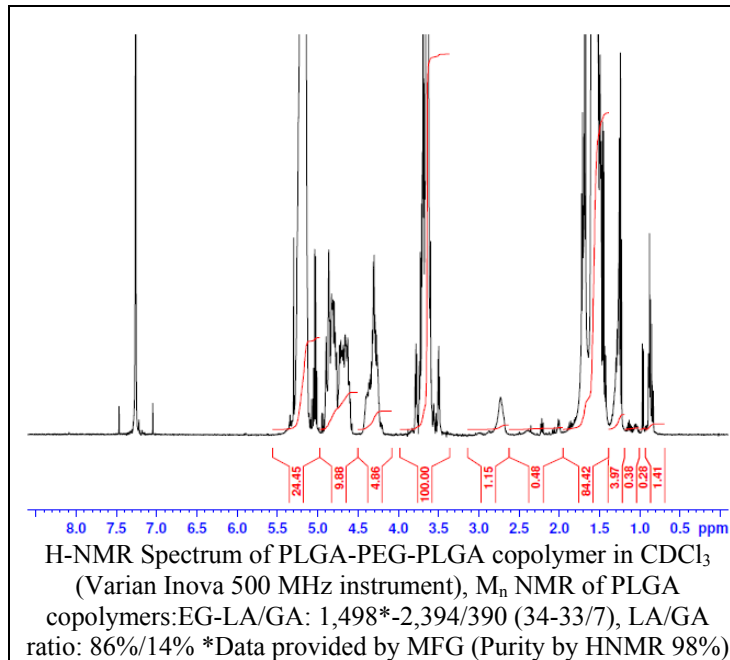


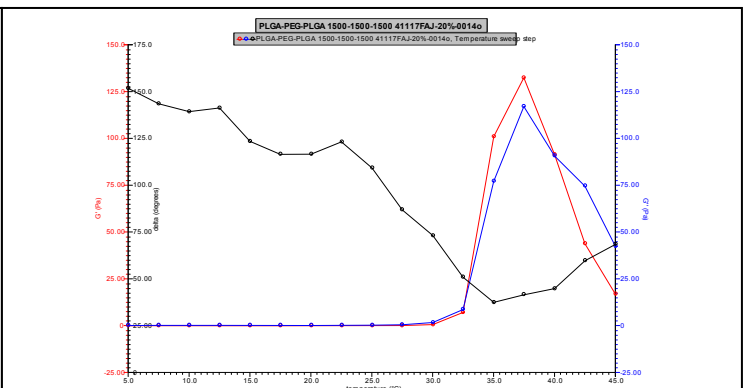
# No. AK91 Certificate of Analysis

Product Name: Poly(lactic-co-glycolic acid)-*b*-Poly(ethylene glycol)-*b*-Poly(lactic-co-glycolic acid) copolymers (M<sub>n</sub> 1,500:1,500:1,500 Da, 6:1, LA:GA) (Lot# 41117FAJ)



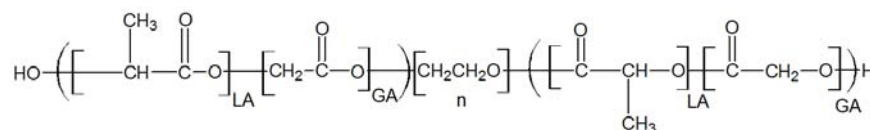
Polymer	M <sub>n</sub> (GPC)	M <sub>w</sub> (GPC)	PDI
PLGA-PEG-PLGA	5,385	6,438	1.20
PEG precursor*	1,485		

\*Data provided by MFG.



Viscosity 20% w/v solution at 5°C 0.2499 Pa.s

## • Structure of PLGA-PEG-PLGA copolymer



Material provided for research use only. Not for human use.

PolySciTech Division of Akina, Inc. | 3495 Kent Avenue, West Lafayette, IN 47906

765-464-0390 | www.polysciotech.com

For research use only.