

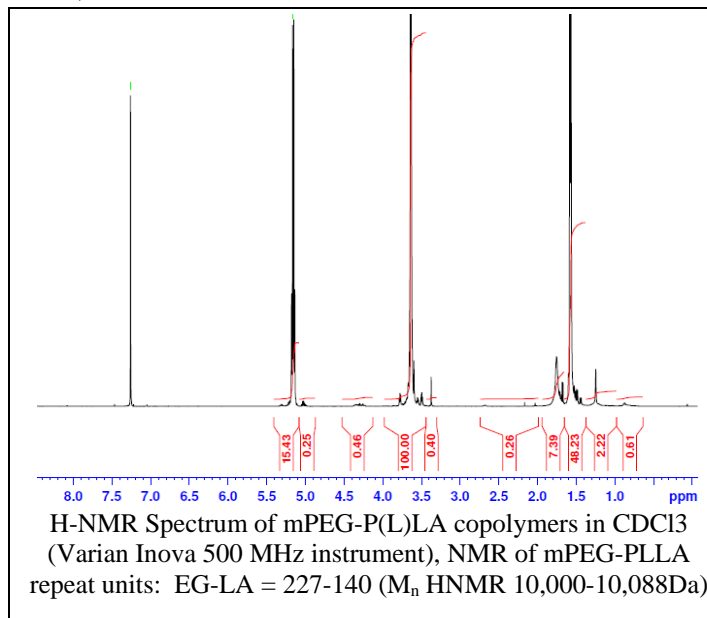
# No. AK065

# Certificate of Analysis

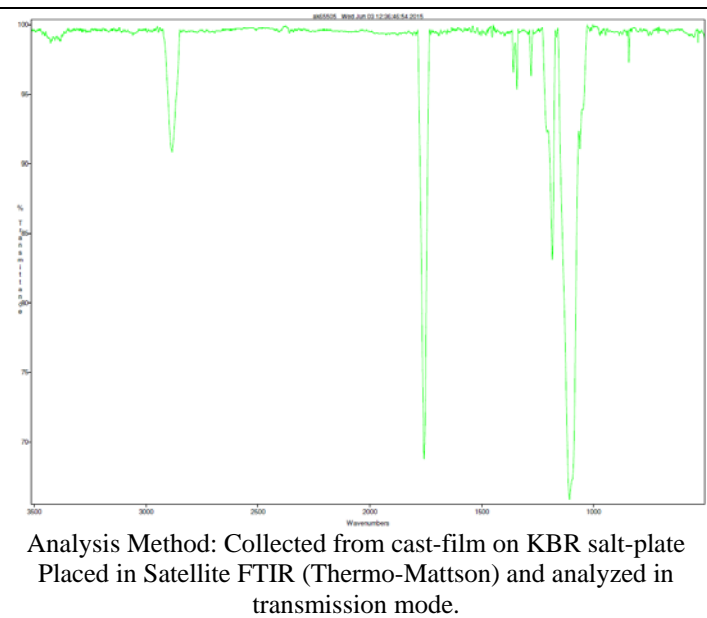


Product Name: Methoxy Poly(ethylene glycol)-*b*-Poly((L)lactide) diblock copolymers  
(10,000:10,000Da) (Lot#: 50528FAJ)

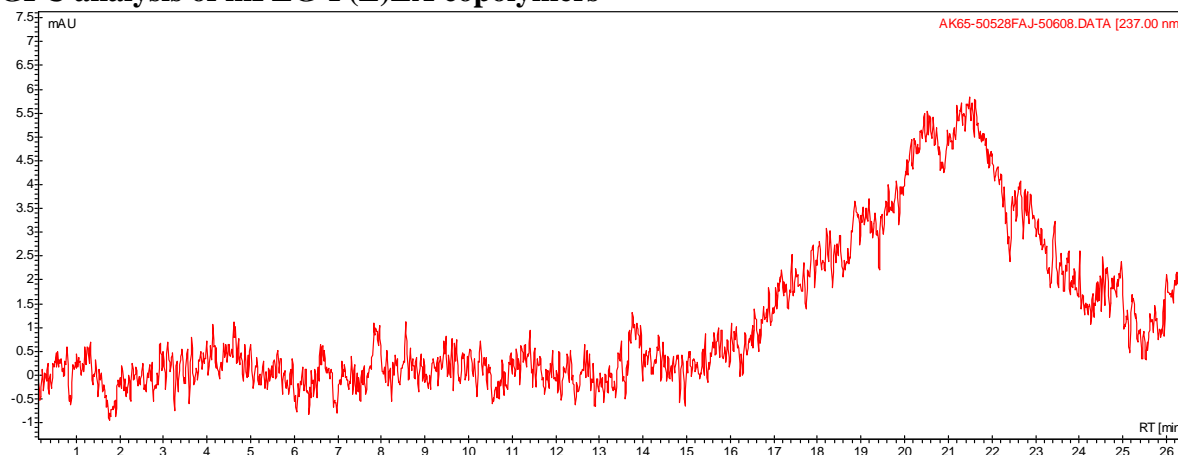
## H-NMR



## FTIR



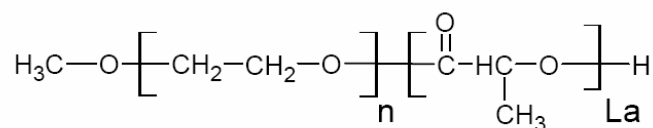
- **GPC analysis of mPEG-P(L)LA copolymers**



Analysis Method: Varian Prostar system with 1 ml/min DCM flow across two Phenogel 5u columns and one Resipore column (Agilent). Detection via UV/Vis, calibrated against poly(ethylene glycol) standards

Polymer	M <sub>n</sub> (from GPC)	M <sub>w</sub> (from GPC)	PDI
mPEG-P(L)LA	12,076	26,960	2.23
mPEG initiator	10,426	10,707	1.03

- **Structure of mPEG-P(DL)LA copolymers**



Material provide for research use only. Not for human use.