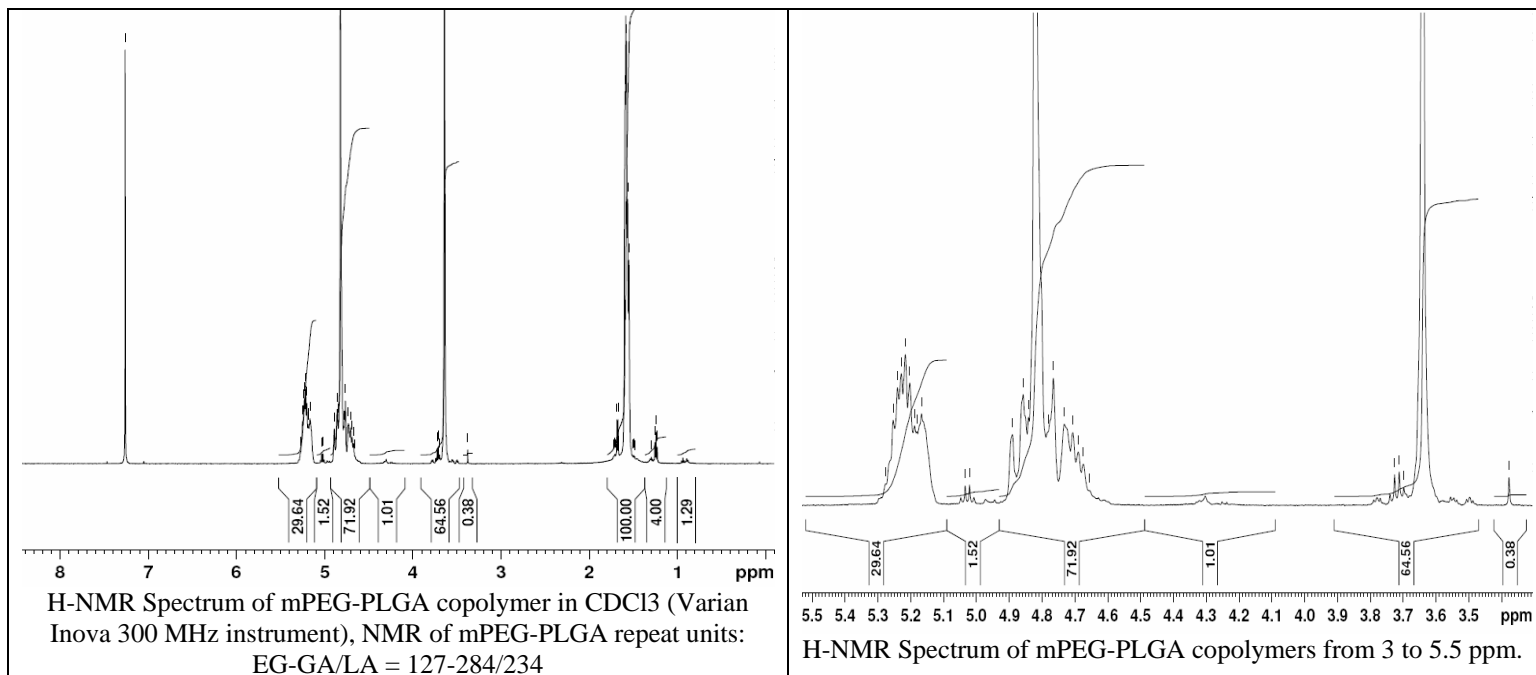
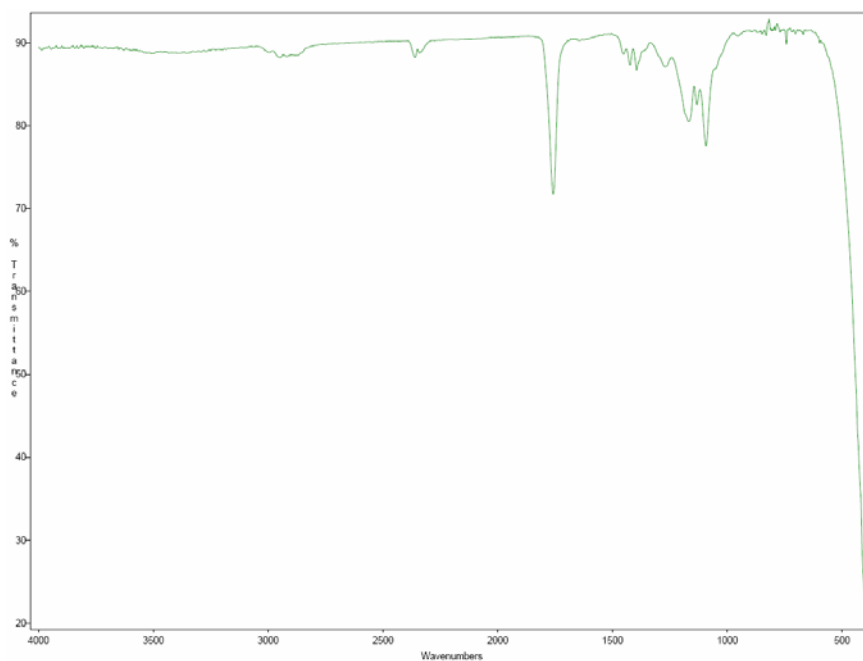


No. AK46 Certificate of Analysis

Product Name: Methoxy-Poly(ethylene glycol) -Poly(lactide-co-glycolide) (5,000-40,000 Da)
(Lot#: 21214JSG)

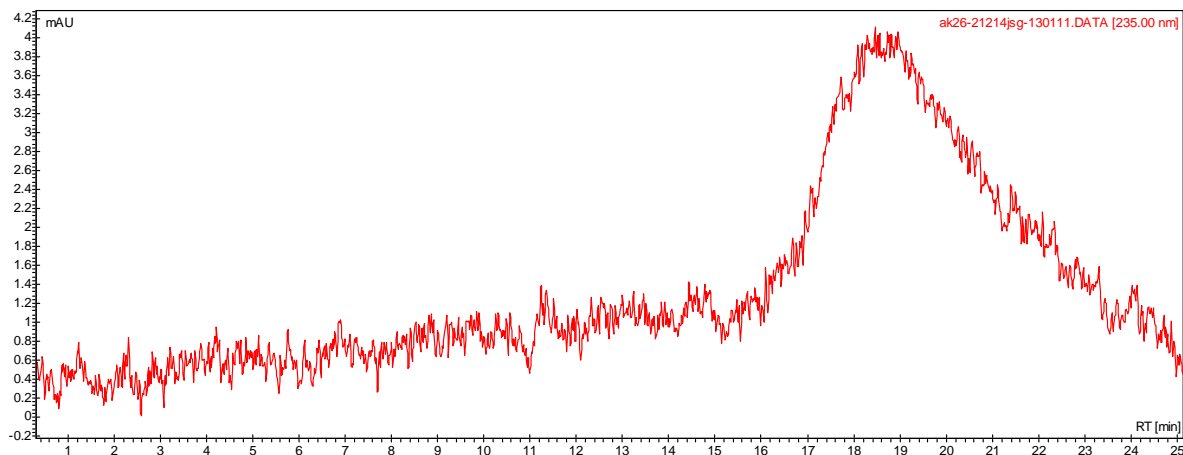


- **FTIR analysis of mPEG-PLGA copolymers**



Collected from cast-film on KBR salt-plate placed in Satellite FTIR (Thermo-Mattson) and analyzed in transmission mode.

- **GPC analysis of mPEG-PLGA copolymers**



Analysis Method: Varian Prostar system with 1 ml/min DCM flow across three PLgel mixed-D columns (Agilent). Detection via UV/Vis, calibrated against polystyrene standards (*PEG standards).

Polymer	Mn (from GPC)	Mw (from GPC)	PDI
mPEG-PLGA	41348	75433	1.83
mPEG5000 initiator*	5488	5847	1.07

- Structure of mPEG-PLGA copolymers**

