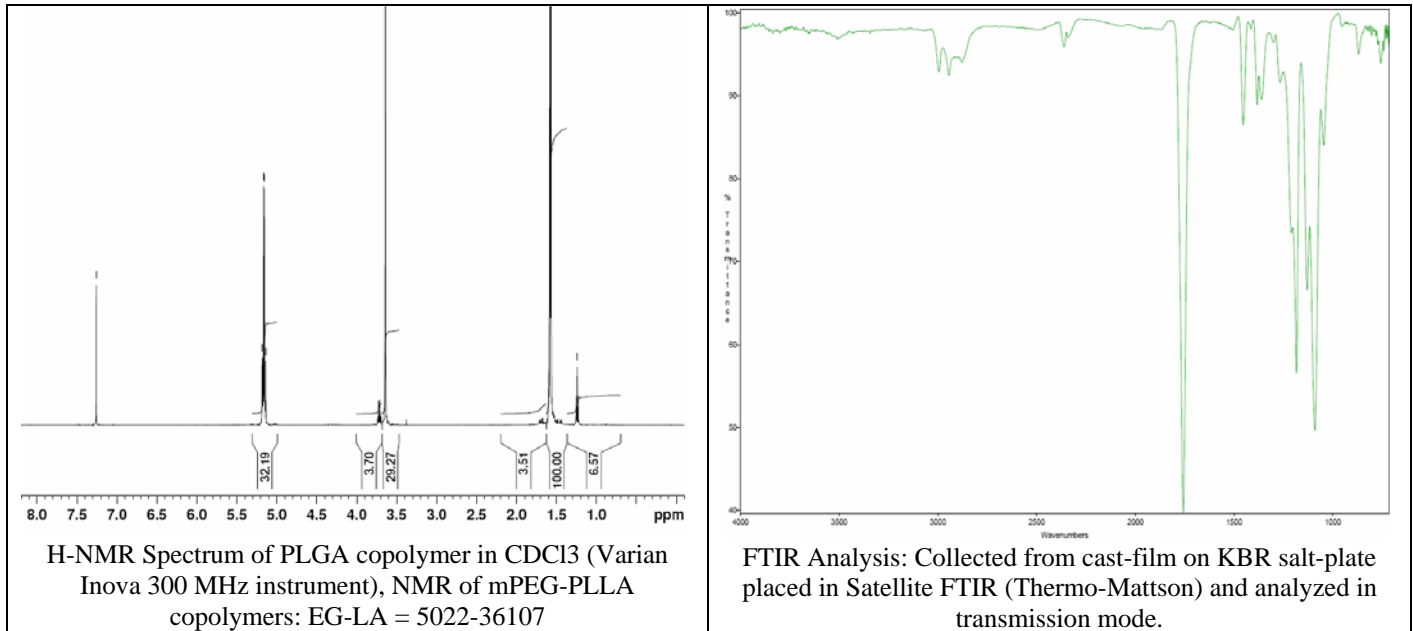


# No. AK41

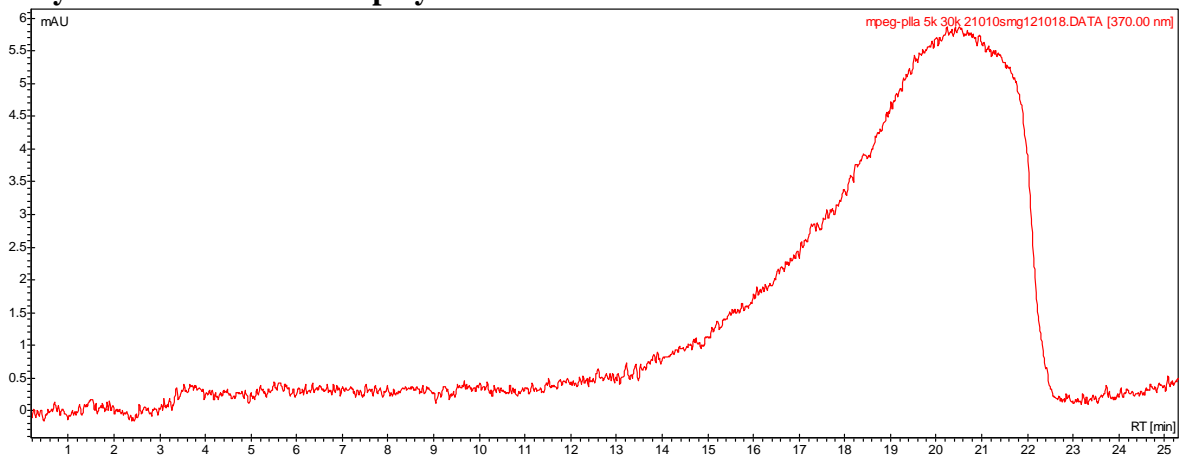
# Certificate of Analysis



Product Name: Methoxy Poly(Ethylene glycol)-b-Poly((L) lactic acid) (5,000:30,000Da)  
(Lot# 21010SMG)



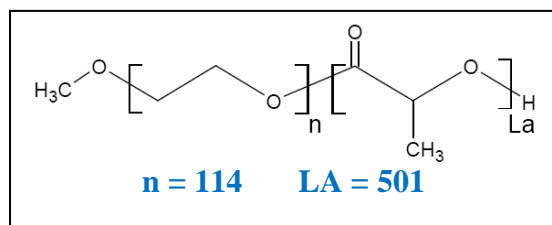
## • GPC analysis of mPEG-PLLA copolymers



Analysis Method: Varian Prostar system with 1 ml/min DCM flow across two PLgel mixed-D columns and one Mixed-E column (Agilent). Detection via UV/Vis, calibrated against polystyrene standards

Polymer	Mn (from GPC)	Mw (from GPC)	PDI
mPEG-PLLA	16306	35510	2.18

## • Structure of mPEG-PLLA copolymers



Material provided for research use only. Not for human use.