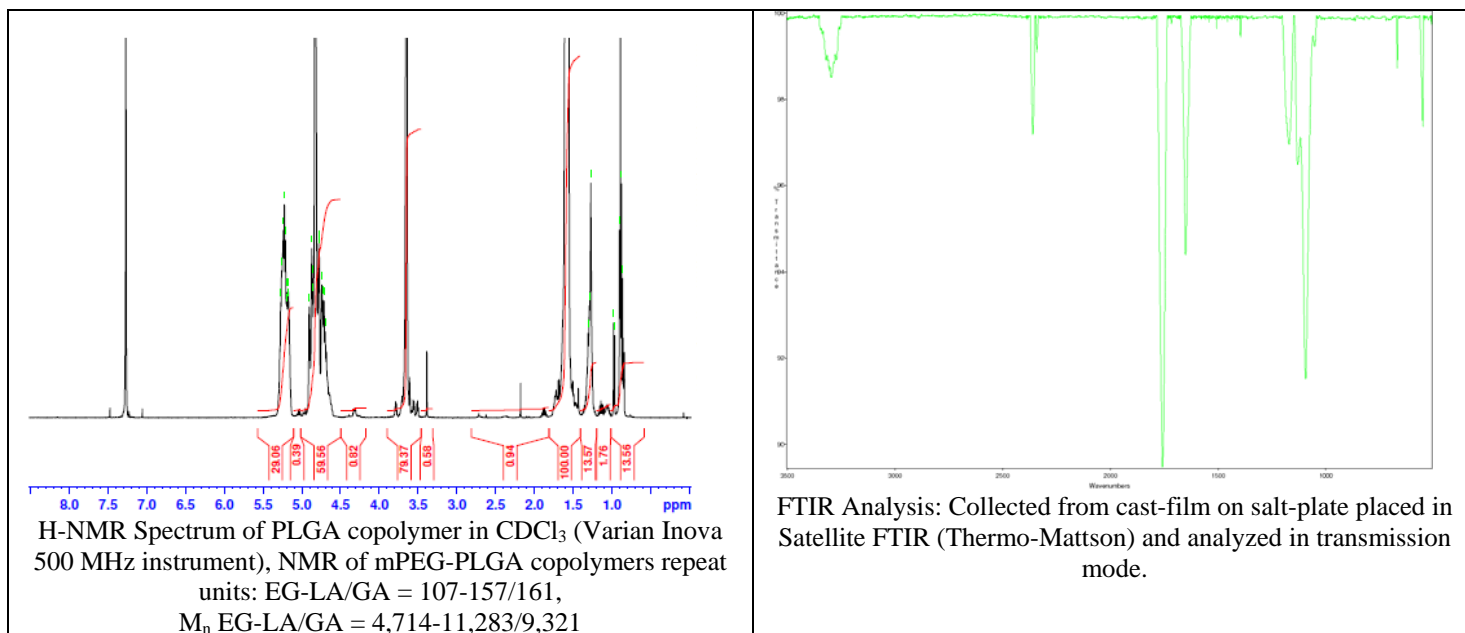
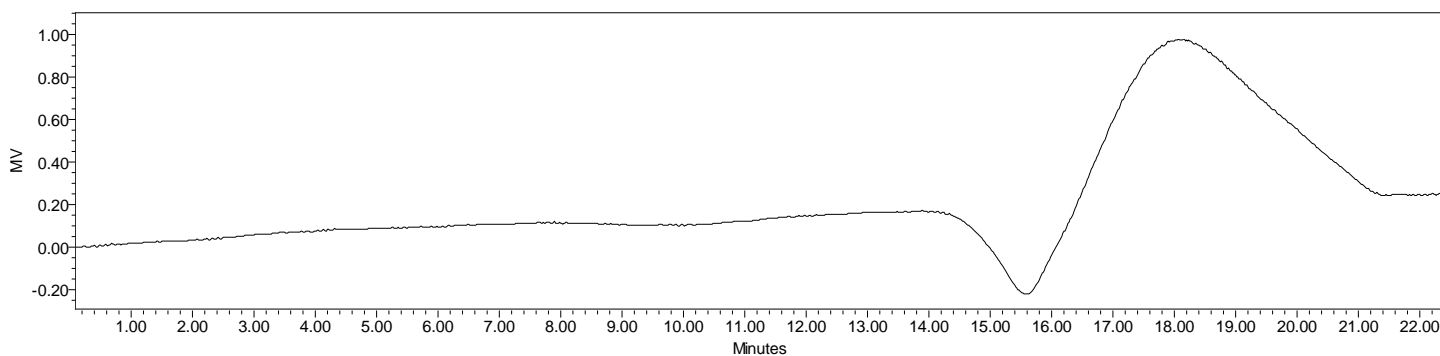


No. AK037 Certificate of Analysis

Product Name: Methoxy Poly(ethylene glycol)-*b*-Poly(lactic-co-glycolic acid) copolymers
($M_w \sim 5,000:20,000Da$) (Lot #: 60216FAJ-E)



- **GPC analysis of mPEG-PLGA copolymers**

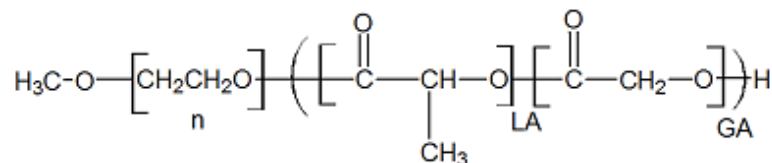


Analysis Method: Waters Breeze 2 system with 1 ml/min DCM flow across three Phenogel 5um columns (Phenomenex). Detection via refractive index, calibrated against polystyrene standards.

Polymer	M_n (from GPC)	M_w (from GPC)	PDI
mPEG-PLGA	19,410	32,004	1.65
mPEG precursor*	4,677	5,272	1.13

*- Run separately, chromatograph not shown

- **Structure of mPEG-PLGA copolymers**



Material provided for research use only. Not for human use.