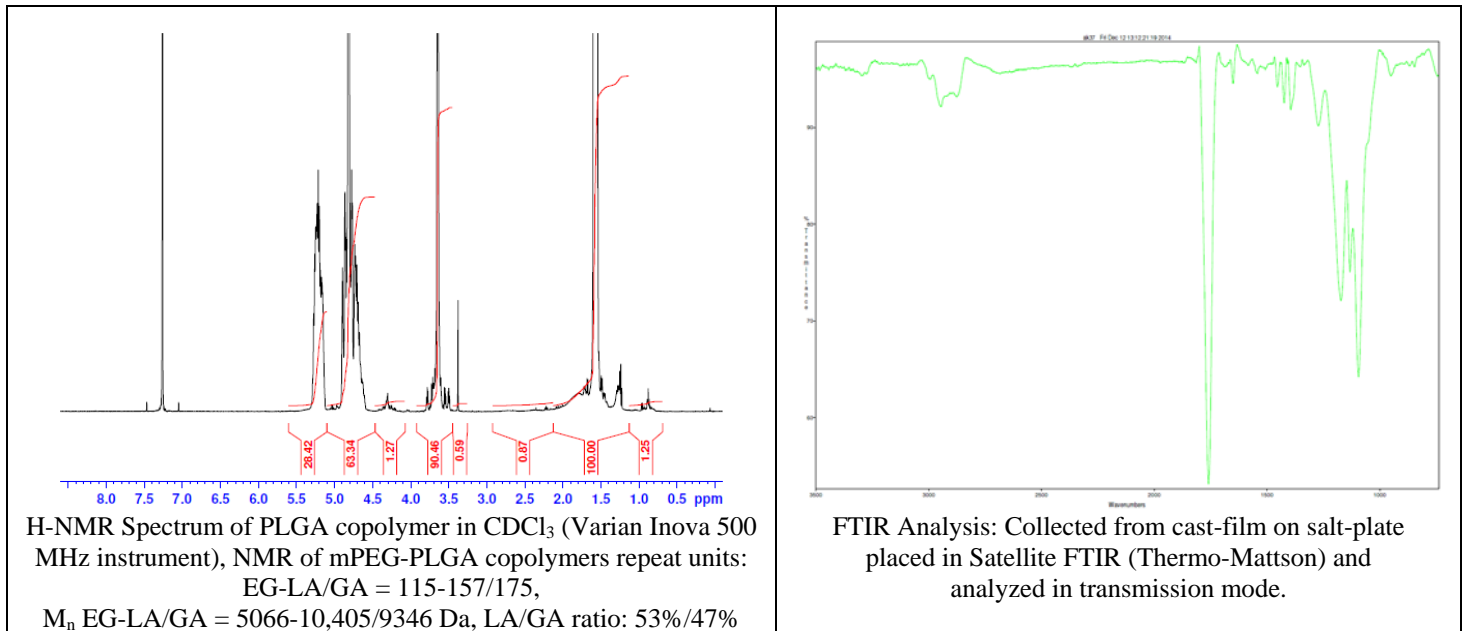


No. AK37

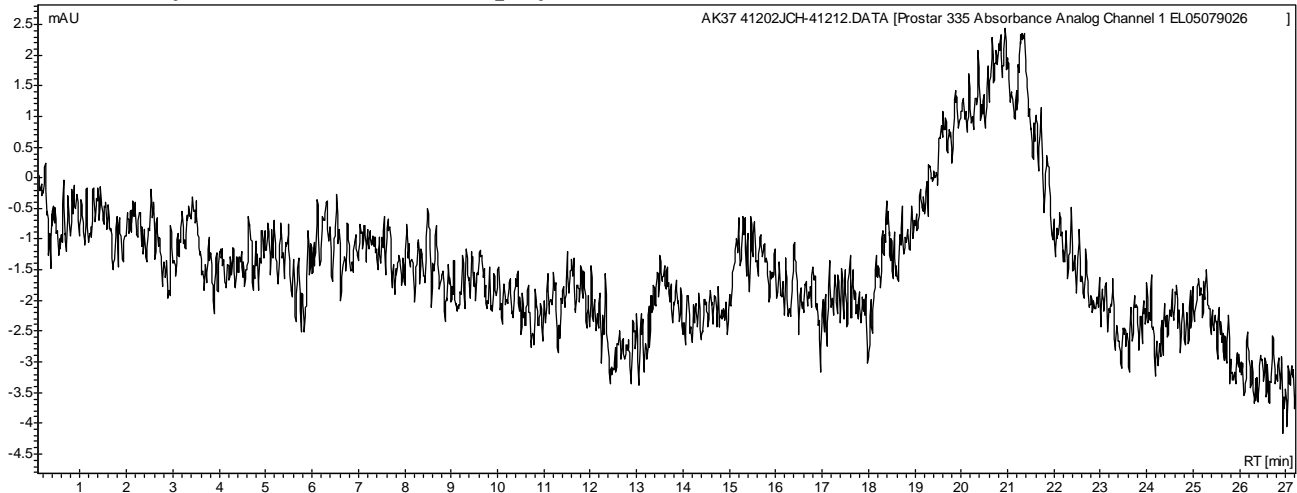
Certificate of Analysis



Product Name: Methoxy Poly(ethylene glycol)-*b*-Poly(lactic-co-glycolic acid) copolymers
($M_w \sim 5,000:20,000$ Da) (Lot #: 41202JCH)



• GPC analysis of mPEG-PLGA copolymers

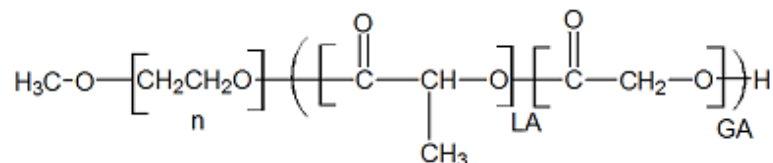


Analysis Method: Varian Prostar system with 1 ml/min DCM flow across two Phenogel 5 μ m columns and one Resipore column (Agilent). Detection via UV/Vis, calibrated against polystyrene standards.

Polymer	M_n (from GPC)	M_w (from GPC)	PDI
mPEG-PLGA	15,629	26,337	1.69
mPEG precursor*	5,488	5,847	1.06

*- Run separately, chromatograph not shown

• Structure of mPEG-PLGA copolymers



Material provided for research use only. Not for human use.

PolySciTech Division of Akina, Inc. | 3495 Kent Avenue, West Lafayette, IN 47906
765-464-0390 | www.polysciotech.com

For research use only.