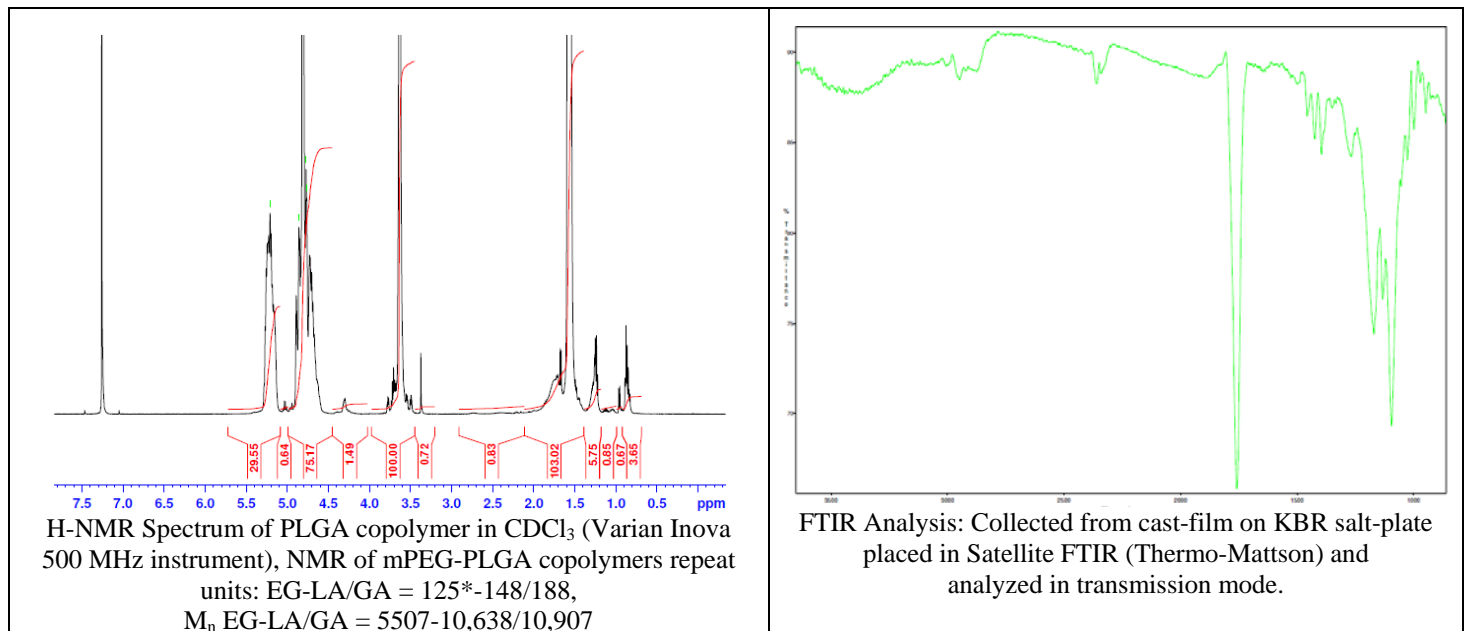
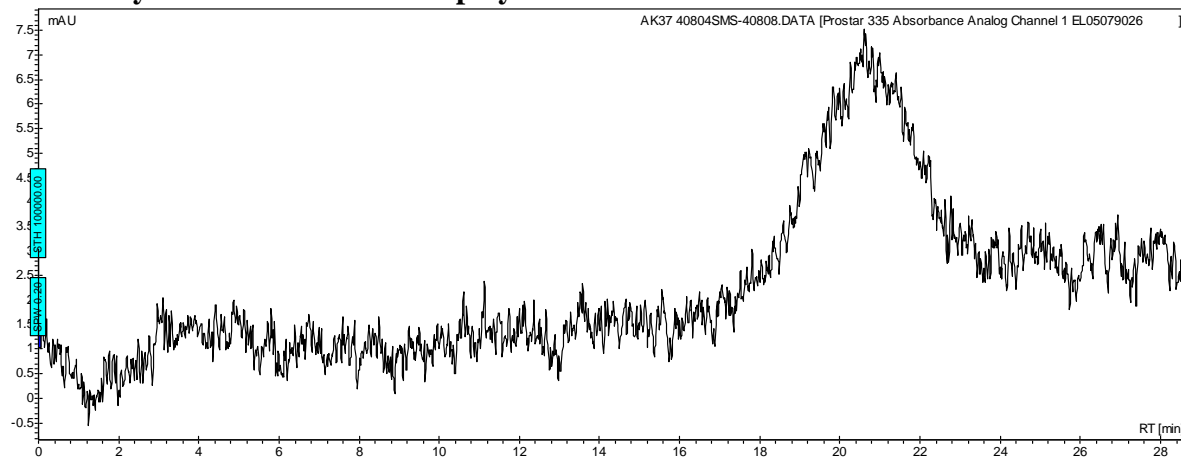


# No. AK37 Certificate of Analysis

Product Name: Methoxy Poly(ethylene glycol)-*b*-Poly(lactic-co-glycolic acid) copolymers  
 ( $M_w \sim 5,000:20,000\text{Da}$ ) (Lot#: 40804SMS)



## • GPC analysis of mPEG-PLGA copolymers

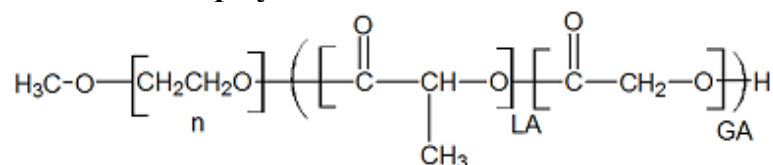


Analysis Method: Varian Prostar system with 1 ml/min DCM flow across two Phenogel 5 $\mu\text{m}$  columns and one Resipore column (Agilent). Detection via UV/Vis, calibrated against polystyrene standards.

Polymer	$M_n$ (from GPC)	$M_w$ (from GPC)	PDI
mPEG-PLGA	14,635	26,160	1.79
mPEG precursor*	5488	5847	1.07

\*- Run separately, data not shown

## • Structure of mPEG-PLGA copolymers



Material provided for research use only. Not for human use.

PolySciTech Division of Akina, Inc. | 3495 Kent Avenue, West Lafayette, IN 47906

765-464-0390 | www.polysciotech.com

For research use only.