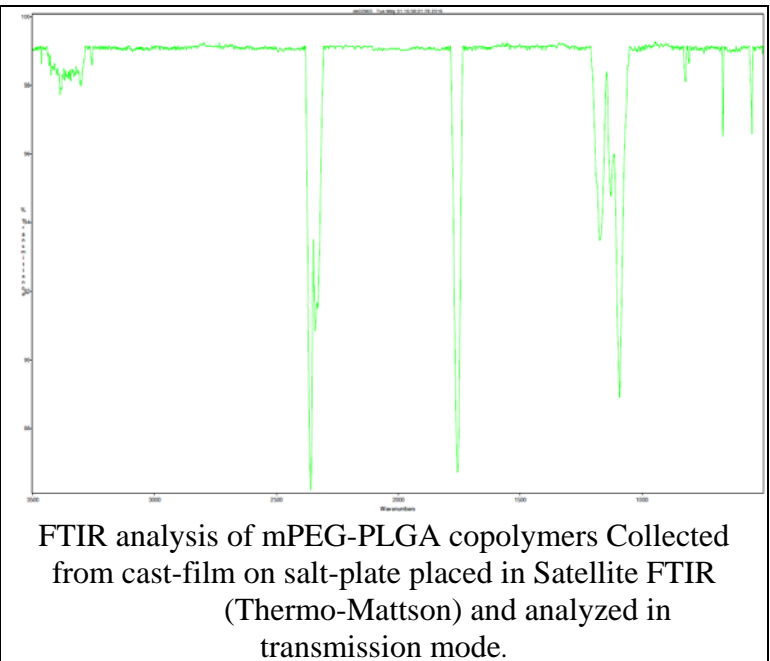
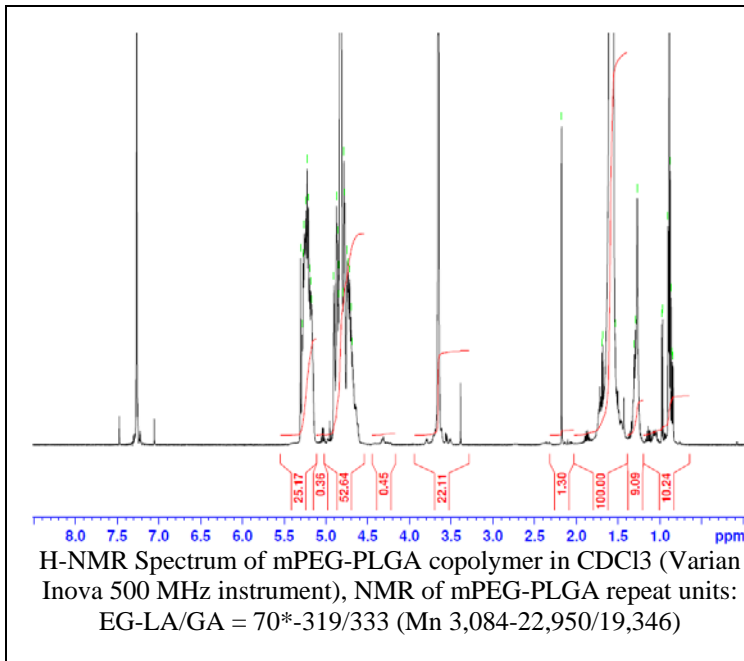


No. AK029

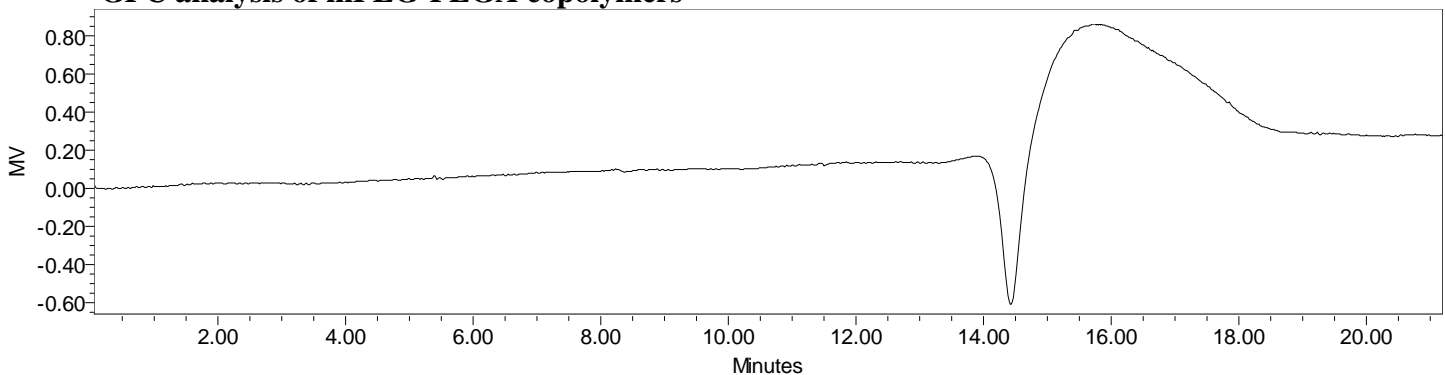
Certificate of Analysis



Product Name: Methoxy Poly(ethylene glycol)-Poly(lactide-co-glycolide) (~3,000:36,000 Da)
(Lot#: 60523EJF-A)



• GPC analysis of mPEG-PLGA copolymers

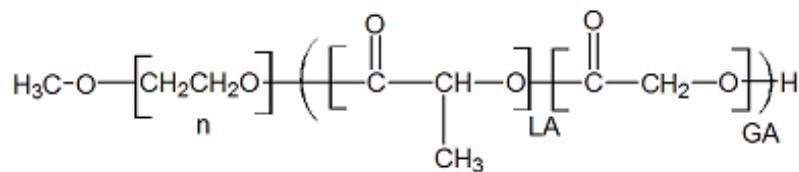


Analysis Method: Waters Breeze system with 1 ml/min DCM flow across three Phenogel 5 μm columns. Detection via refractory index, calibrated against polystyrene standards (*PEG standards).

Polymer	M _n (from GPC)	M _w (from GPC)	PDI
mPEG-PLGA	39,442	49,970	1.27
mPEG5000 initiator*	3,072	-	1.04

*MFG Provided information

• Structure of mPEG-PLGA copolymers



Material provided for research use only. Not for human use.

PolySciTech Division of Akina, Inc. | 3495 Kent Avenue, West Lafayette, IN 47906

765-464-0390 | www.polysciotech.com

For research use only.