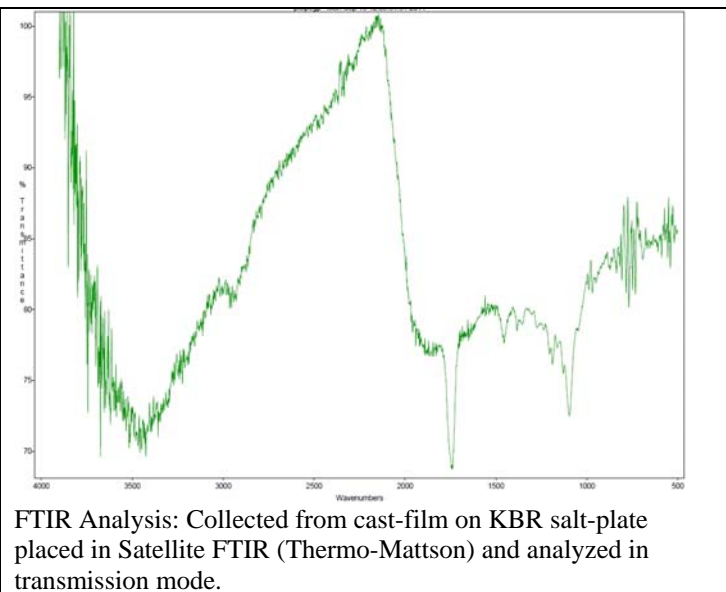
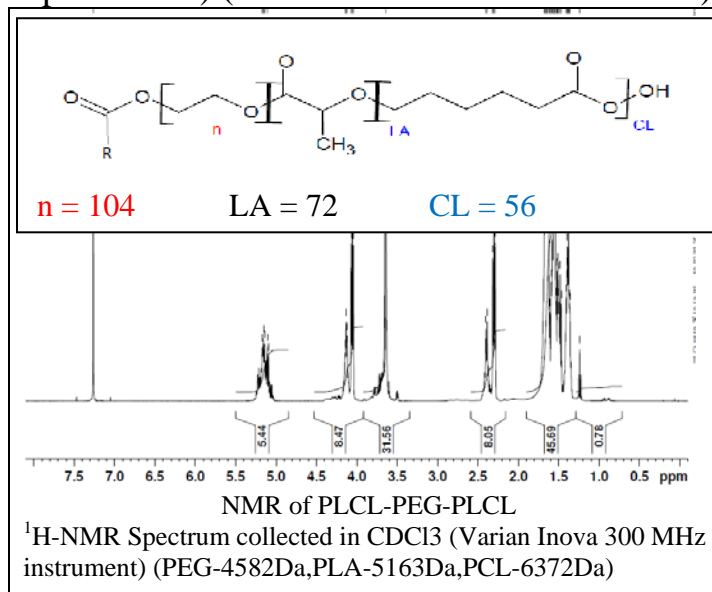


# No. AK28

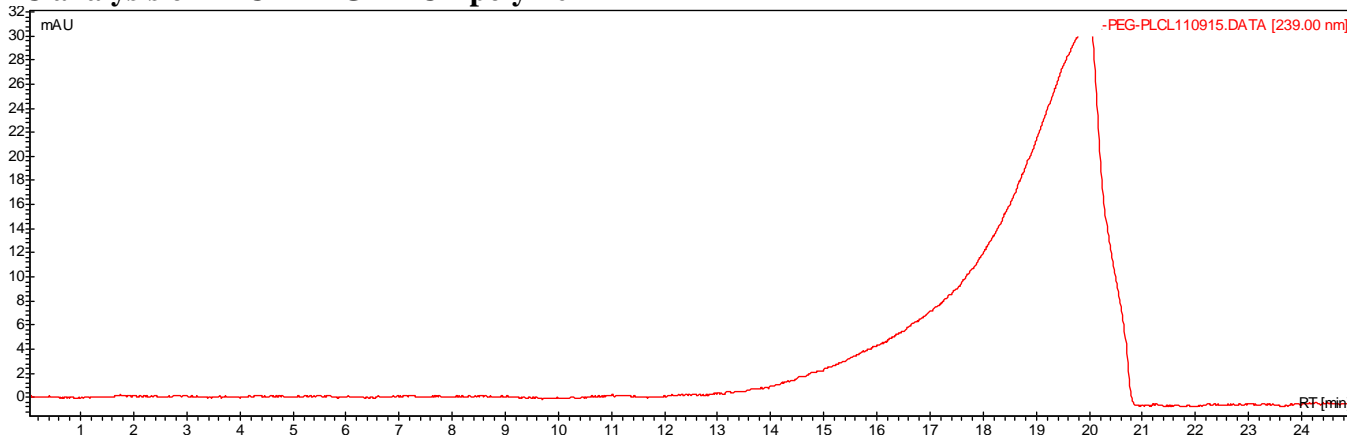
# Certificate of Analysis



Product Name: Poly(lactide-co-caprolactone)-b-Poly(ethylene glycol)-b- Poly(lactide-co-caprolactone) (5700-4600-5700Da 1:1 LA:CL)



## • GPC analysis of PLCL-PEG-PLCL polymer



Analysis Method: Varian Prostar system with 1 ml/min DCM flow across two Resipore 3 um columns and one Mixed E column (Varian) and with UV-Vis (PDA) detection. Calibrated against polystyrene standards

Polymer	Mn (from GPC)	Mw (from GPC)	PDI
PLCL-PEG-PLCL	27626	47296	1.71
PEG4600 initiator	3346	4227	1.26