

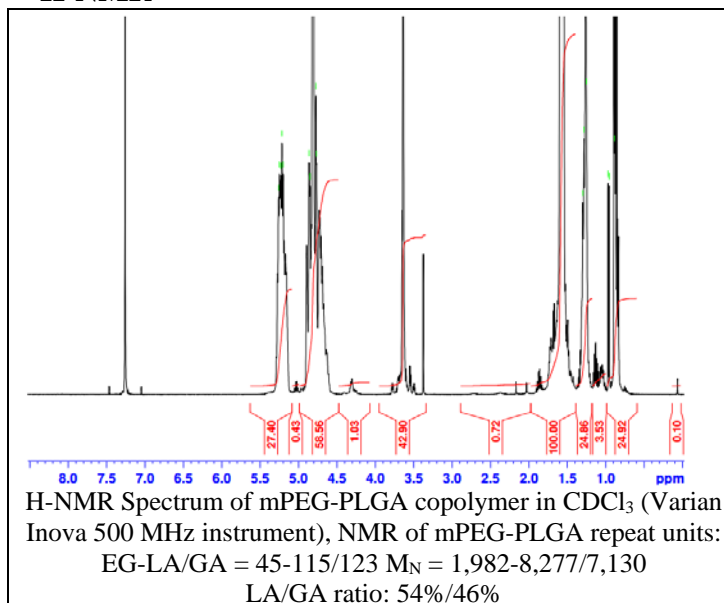
# No. AK27

# Certificate of Analysis

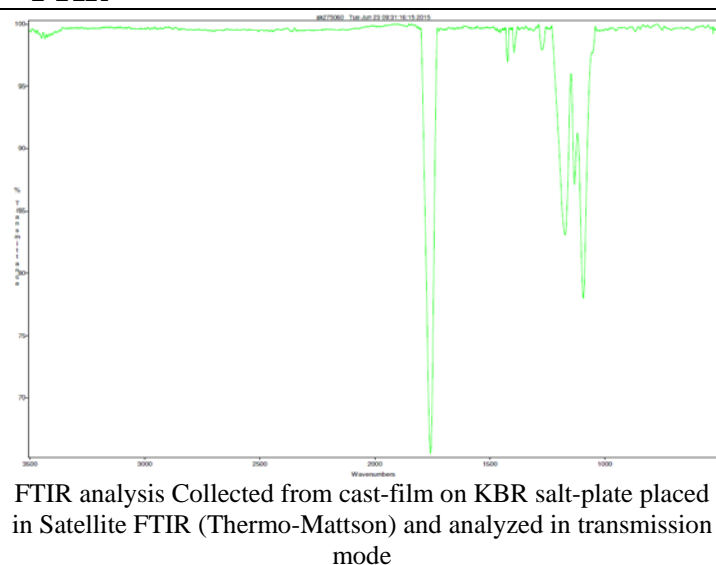


Product Name: Methoxy Poly(ethylene glycol)-*b*-Poly(lactide-co-glycolide)  
( $M_w \sim 2,000:15,000$  Da, 50:50 LA:GA) (Lot#: 50609FAJ)

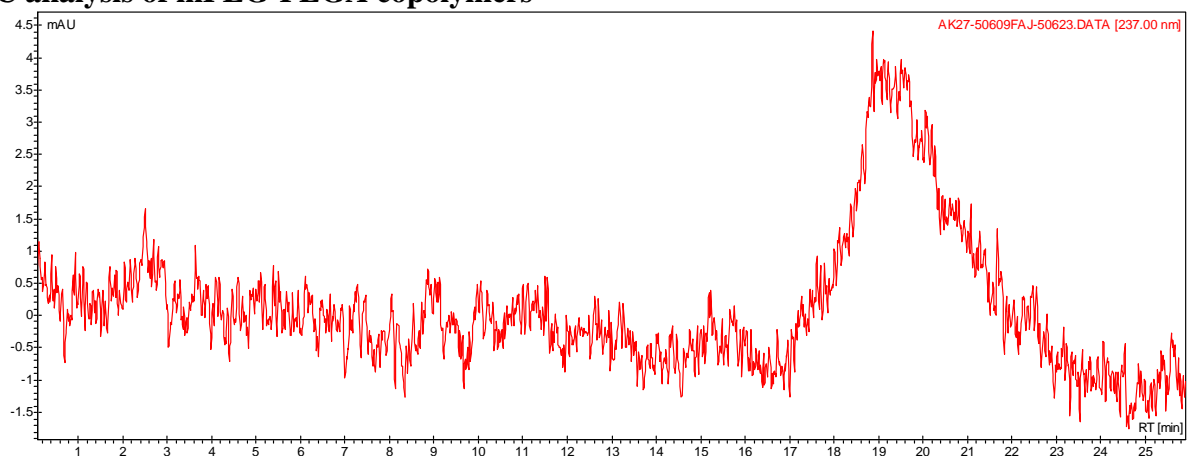
## H-NMR



## FTIR



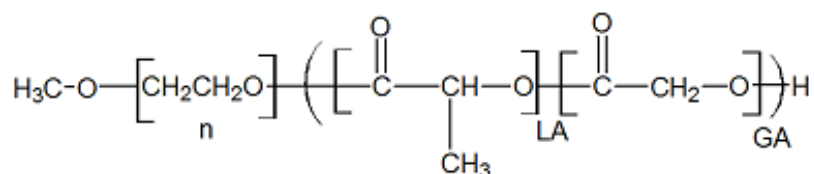
### • GPC analysis of mPEG-PLGA copolymers



Analysis Method: Varian Prostar system with 1 ml/min DCM flow across two  $5\mu m$  Phenogel columns and one Resipore column (Agilent). Detection via UV/Vis, calibrated against polystyrene standards.

| Polymer            | $M_n$ (from GPC)          | $M_w$ (from GPC) | PDI  |
|--------------------|---------------------------|------------------|------|
| mPEG-PLGA          | 8,788                     | 20,014           | 2.28 |
| mPEG2000 initiator | MFG listed $M_n$ as 1,965 |                  |      |

### • Structure of mPEG-PLGA copolymers



Material provided for research use only. Not for human use.

PolySciTech Division of Akina, Inc. | 3495 Kent Avenue, West Lafayette, IN 47906

765-464-0390 | www.polysciotech.com

For research use only.