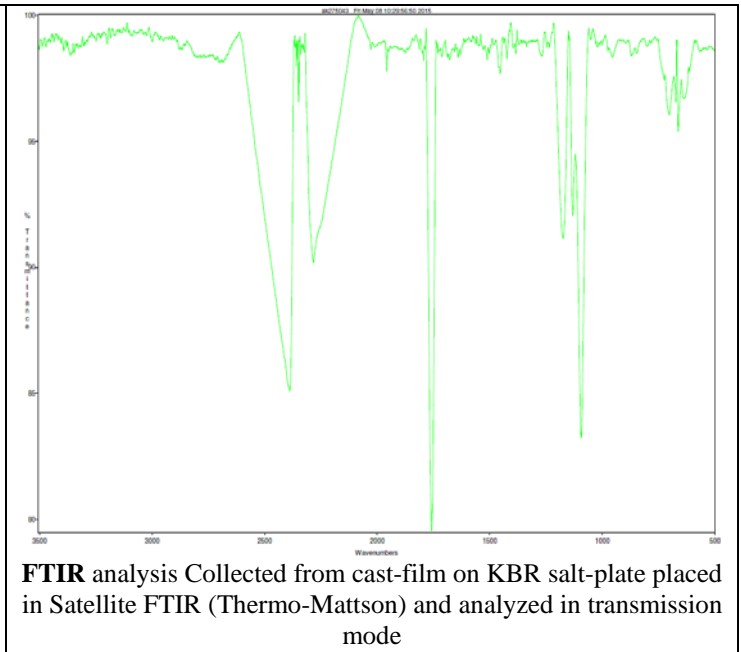
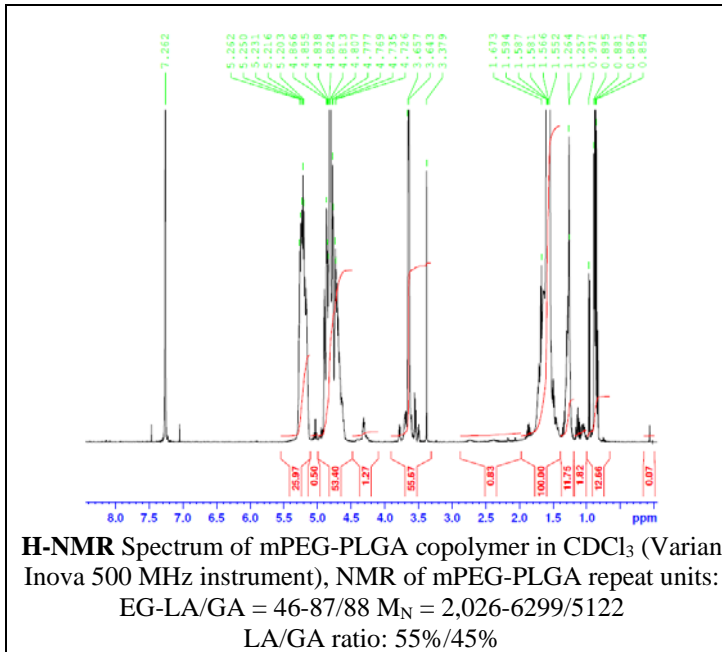
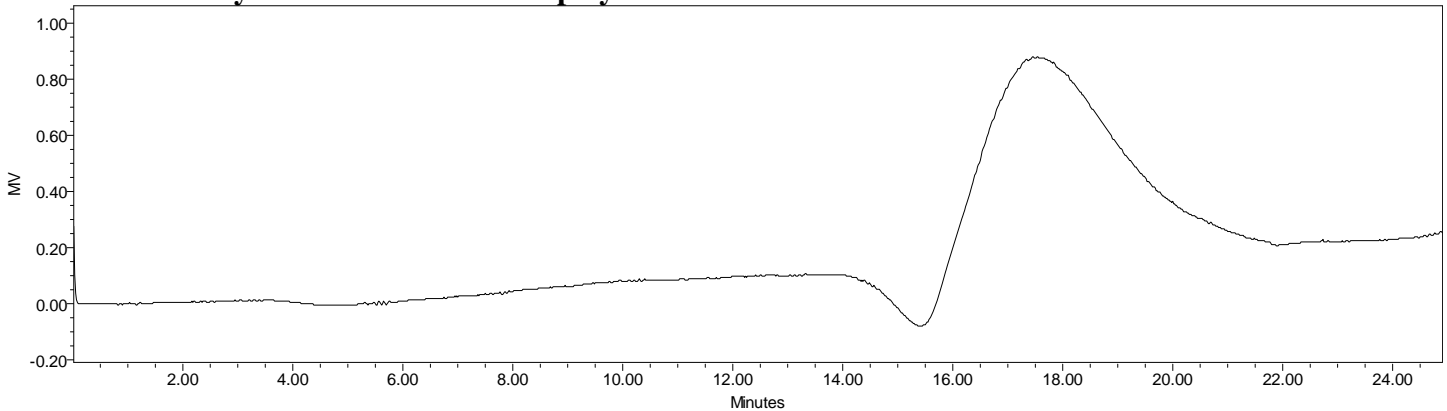


# No. AK027 Certificate of Analysis

Product Name: Methoxy Poly(ethylene glycol)-*b*-Poly(lactide-co-glycolide)  
 (M<sub>w</sub> ~2,000:15,000 Da, 1:1 LA:GA) (Lot#: 50430BAK) (REV:A GPC)



## • GPC analysis of mPEG-PLGA copolymers

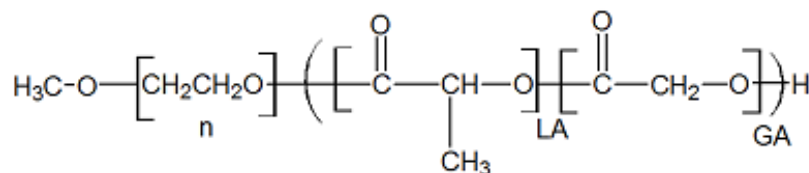


Analysis Method: Varian Prostar system with 1 ml/min DCM flow across two 5µm Phenogel columns and one Resipore column (Agilent). Detection via UV/Vis, calibrated against polystyrene standards.

| Polymer             | M <sub>n</sub> (from GPC) | M <sub>w</sub> (from GPC) | PDI  |
|---------------------|---------------------------|---------------------------|------|
| mPEG-PLGA           | 21,032                    | 35,399                    | 1.68 |
| mPEG2000 initiator* | 2326                      | 2428                      | 1.04 |

\*calibrated against PEG standards

## • Structure of mPEG-PLGA copolymers



Material provided for research use only. Not for human use.