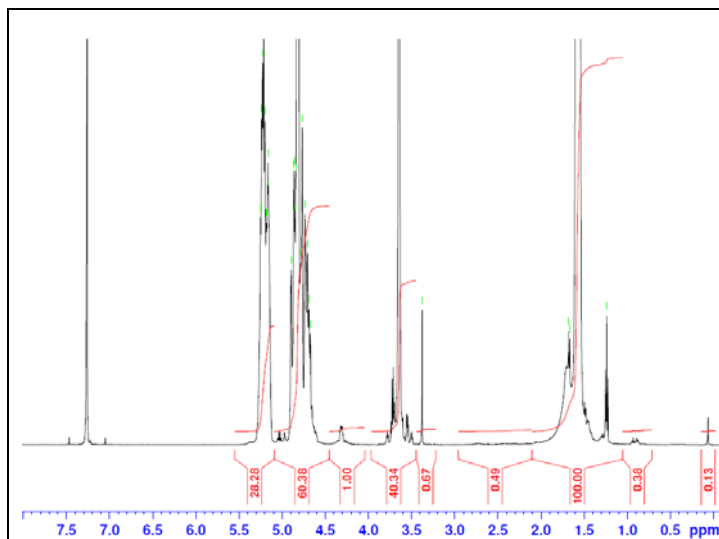


No. AK27

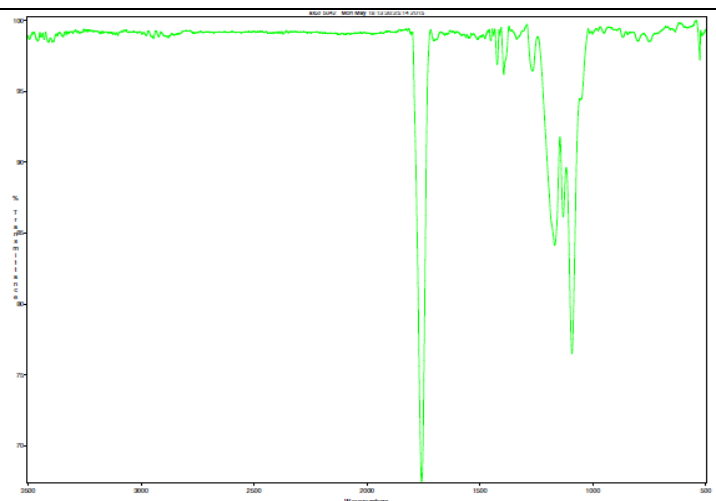
Certificate of Analysis



Product Name: Methoxy Poly(ethylene glycol)-*b*-Poly(lactide-co-glycolide)
($M_w \sim 2,000:15,000$ Da, 1:1 LA:GA) (Lot#: 50427BAK)

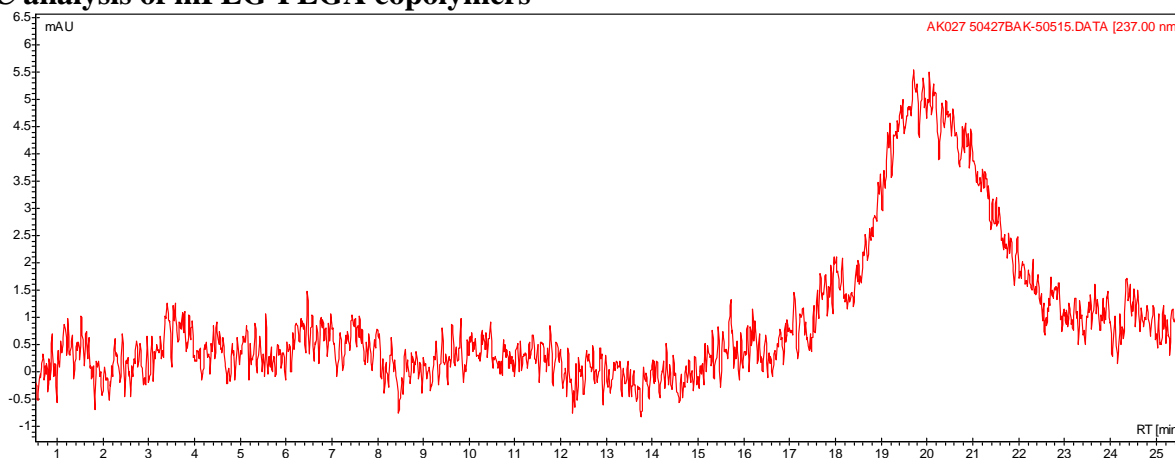


**$^1\text{H-NMR}$ Spectrum of mPEG-PLGA copolymer in CDCl_3 (Varian Inova 500 MHz instrument), NMR of mPEG-PLGA repeat units:
EG-LA/GA = 46-129/138 $M_N = 2,026-9287/7992$
LA/GA ratio: 54%/46%**



FTIR analysis Collected from cast-film on KBR salt-plate placed in Satellite FTIR (Thermo-Mattson) and analyzed in transmission mode

• GPC analysis of mPEG-PLGA copolymers

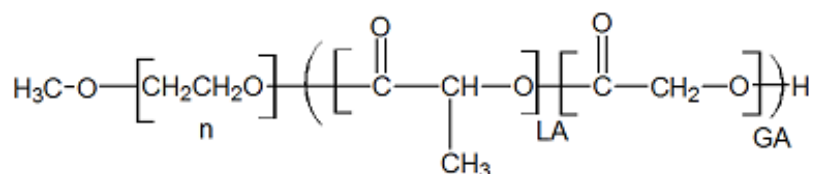


Analysis Method: Varian Prostar system with 1 ml/min DCM flow across two $5\mu\text{m}$ Phenogel columns and one Resipore column (Agilent). Detection via UV/Vis, calibrated against polystyrene standards.

Polymer	M_n (from GPC)	M_w (from GPC)	PDI
mPEG-PLGA	15315	27936	1.82
mPEG2000 initiator*	2179	2205	1.01

*calibrated against PEG standards

• Structure of mPEG-PLGA copolymers



Material provided for research use only. Not for human use.

PolySciTech Division of Akina, Inc. | 3495 Kent Avenue, West Lafayette, IN 47906
765-464-0390 | www.polysciotech.com

For research use only.