

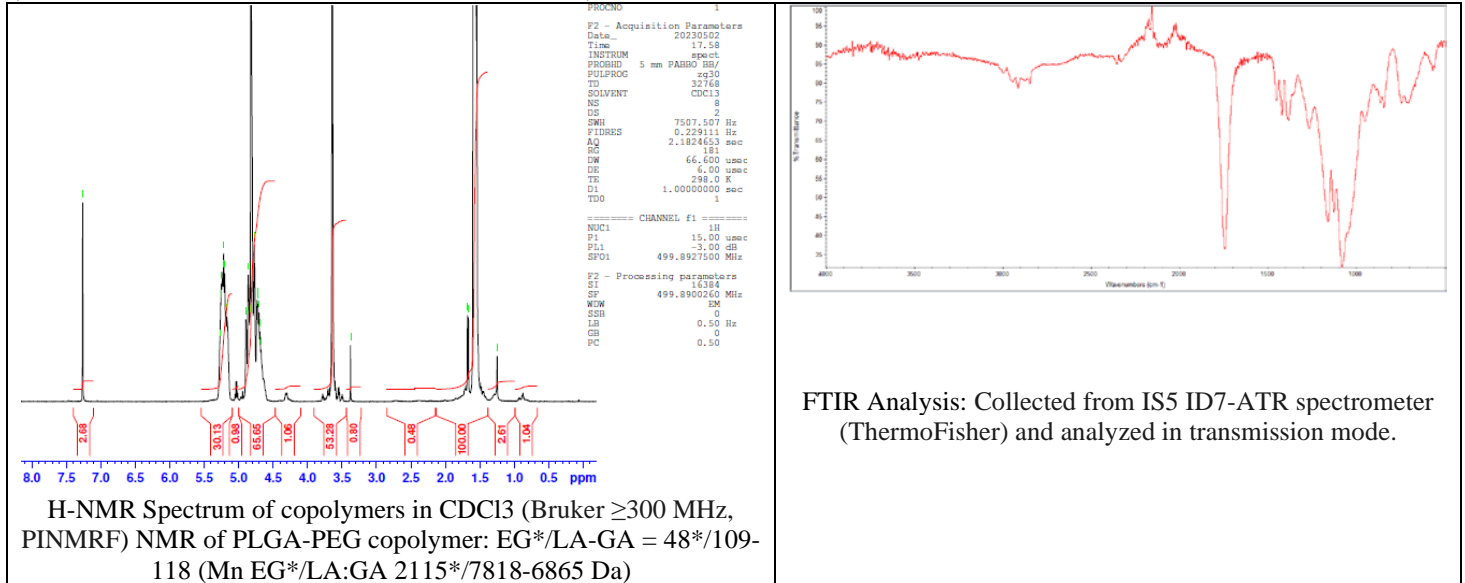
# No. AK027

# Certificate of Analysis

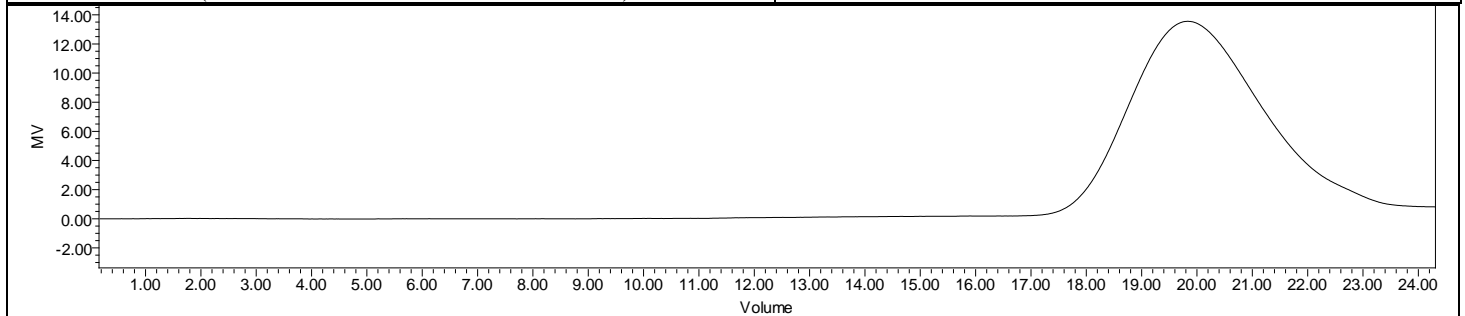


Product Name: Methoxy-Poly(ethylene glycol)-*b*-Poly(lactide-co-glycolide)

(M<sub>w</sub> ~ 2,000:15,000 Da, 50:50 LA:GA) (Lot# 230425RAI-A)



FTIR Analysis: Collected from IS5 ID7-ATR spectrometer (ThermoFisher) and analyzed in transmission mode.

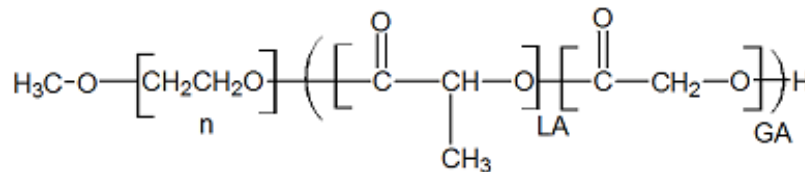


GPC-ES Analysis Method: Waters Breeze 2 system with 1 ml/min THF flow across three GPC columns. Detection via refractive index, calibrated against polystyrene standards.

Polymer	M <sub>n</sub> (from GPC)	M <sub>w</sub> (from GPC)	PDI
mPEG-PLGA	18,929	30,142	1.59
PEG precursor*		2135*	

\*- from MFG data

## Structure of mPEG-PLGA copolymers



Approved By:  
*Amie Tyler*  
Quality Manager