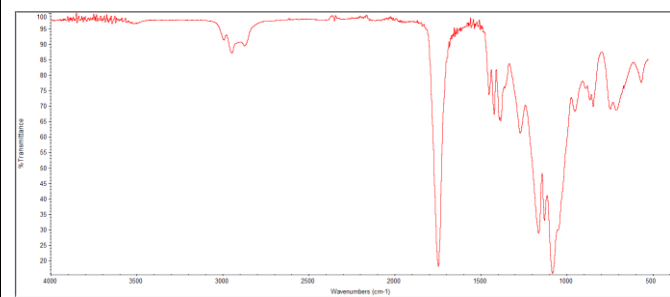
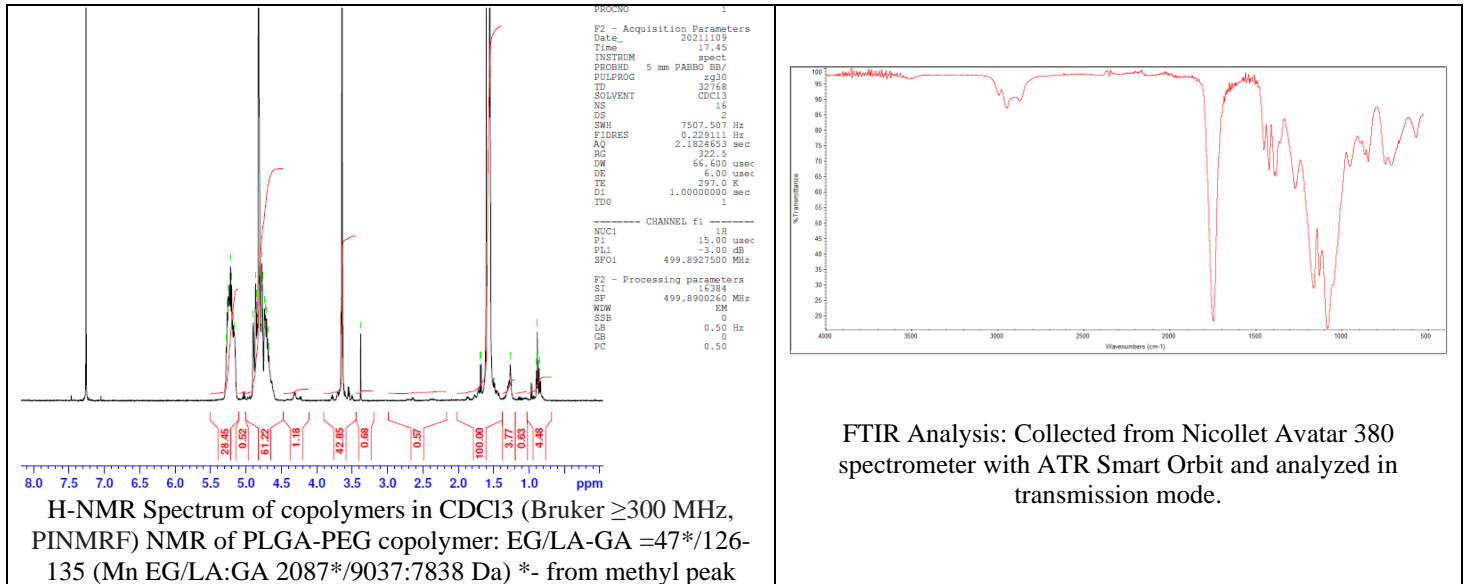


No. AK027

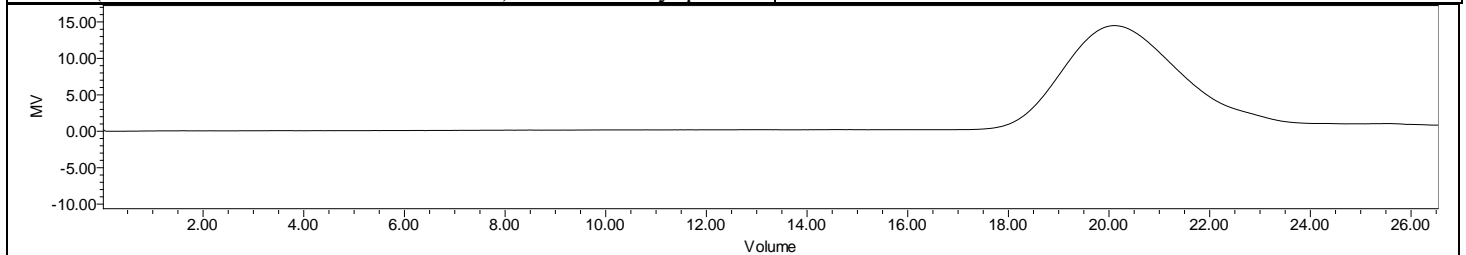
Certificate of Analysis



Product Name: Methoxy Poly(ethylene glycol)-*b*-Poly(lactide-co-glycolide)
($M_w \sim 2,000$: $15,000$ Da, 1:1 LA:GA) (Lot#: 211029BRD-A)



FTIR Analysis: Collected from Nicolet Avator 380 spectrometer with ATR Smart Orbit and analyzed in transmission mode.



GPC Analysis Method: Waters Breeze 2 system with 1 ml/min THF flow across three GPC columns. Detection via refractive index, calibrated against polystyrene standards.

Polymer	M_n (from GPC)	M_w (from GPC)	PDI
PLGA-PEG	18,553	27,239	1.47
PEG precursor*		2468*	

*- from MFG data

Structure of mPEG-PLGA copolymers

