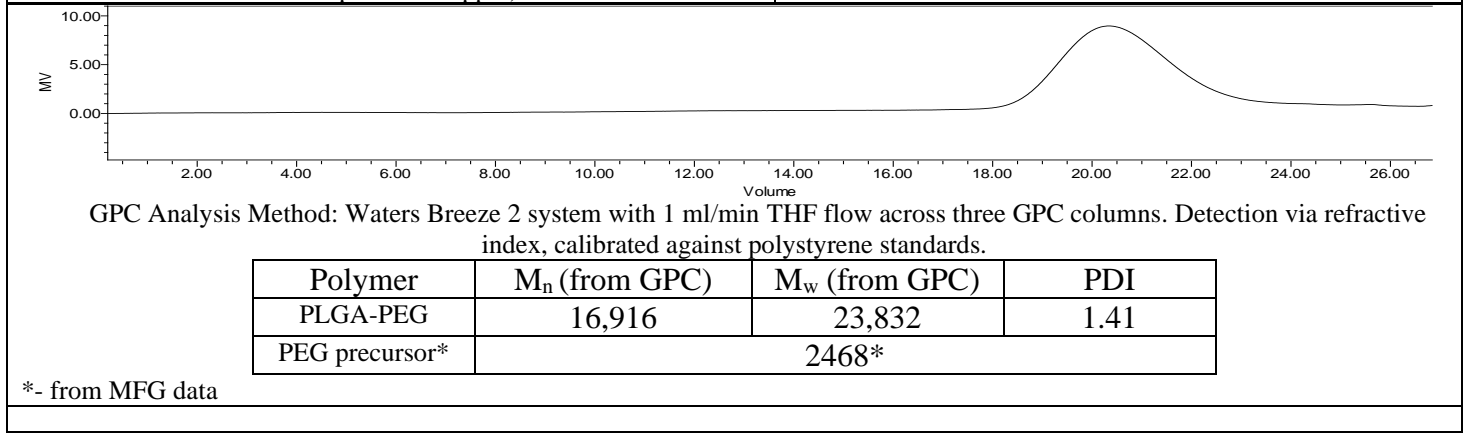
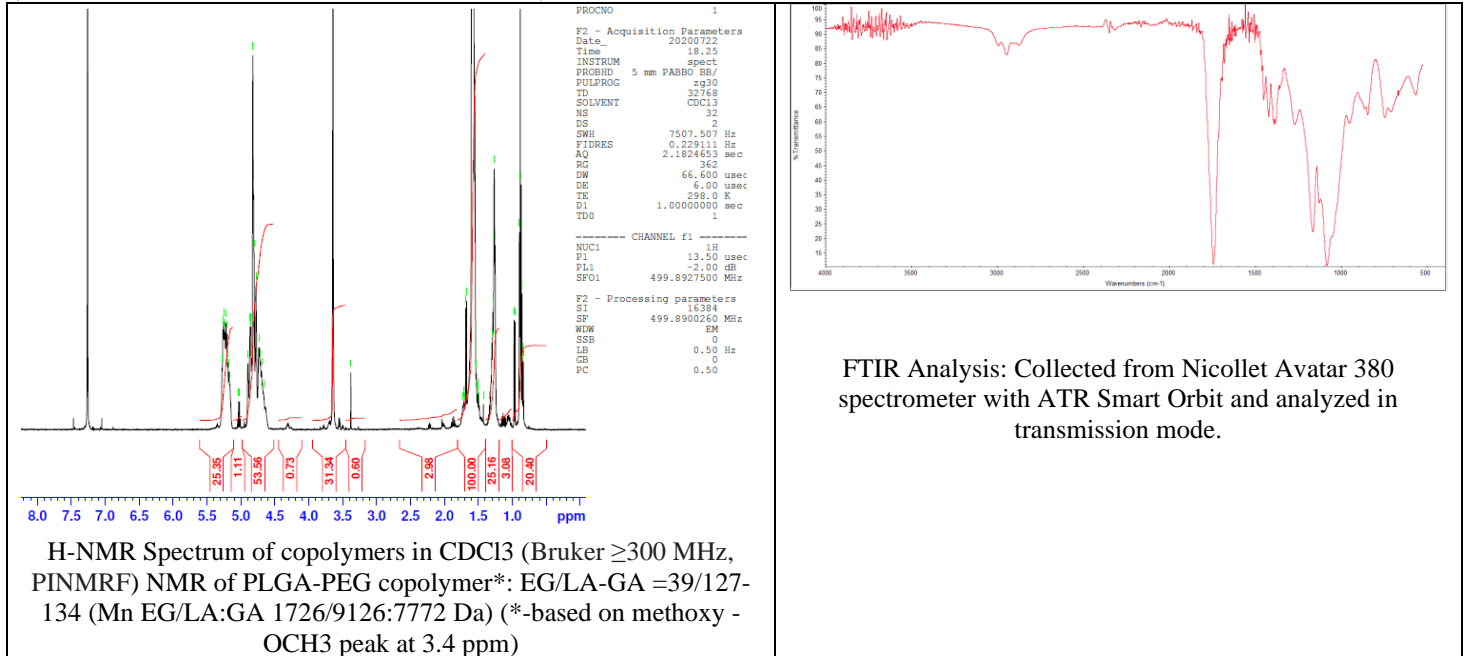


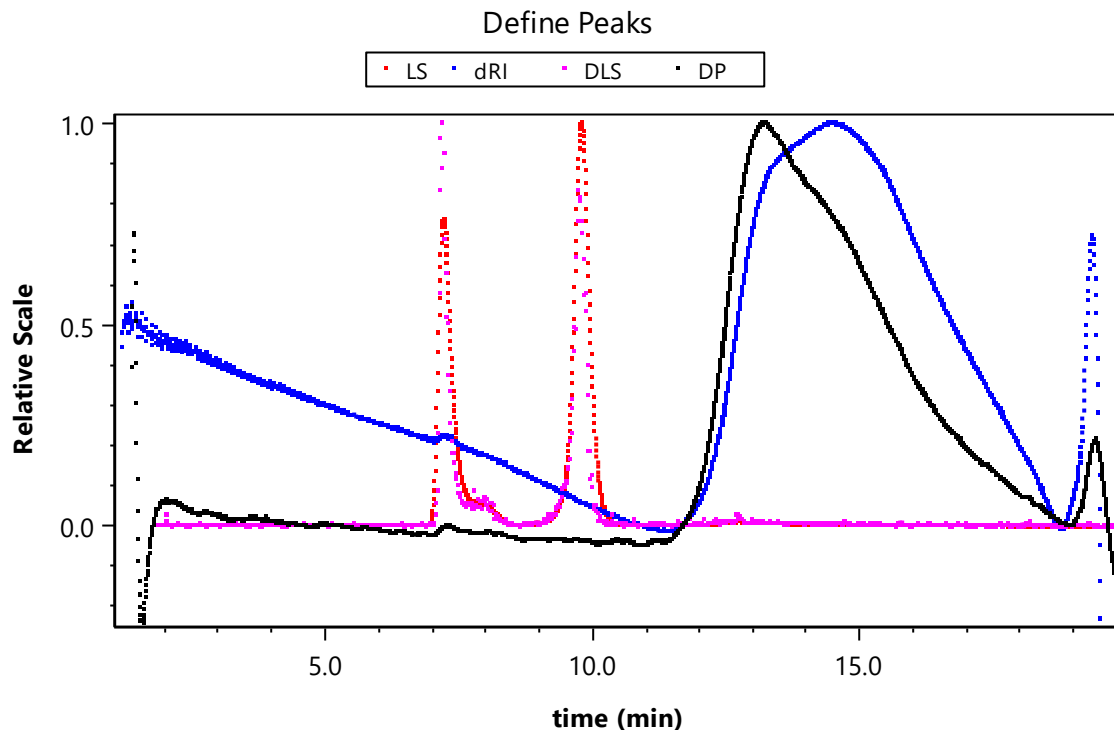
No. AK027

Certificate of Analysis



Product Name: Methoxy Poly(ethylene glycol)-*b*-Poly(lactide-co-glycolide)
($M_w \sim 2,000$: $15,000$ Da, 1:1 LA:GA) (Lot#: 200716RAI-A)





GPC-4D Analysis Method: Agilent 1260 Infinity II system 0.6 ml/min Acetone flow across TSKgel GMHHR-L, 7.8 mm x 30 cm. Detection Dawn Heleos II (MALLS), Optilab T-rex (RI), Dynapro nanostar (DLS), and Viscostar III (viscosity), universal calibration (Wyatt).

Polymer	M_n (from GPC-4D)	M_p (from GPC-4D)	M_w (from GPC-4D)	Radius (r(avg), nm)	Intrinsic viscosity ([η](avg), mL/g)
PLGA-PEG	12,220	6,116	23,422	3.177	18.874

* - Due to differences in methodology, Results from GPC-4D universal calibration will be different from those obtained from GPC-ES. The data from GPC-4D analysis is provided for customer information only.

- Structure of mPEG-PLGA copolymers**

