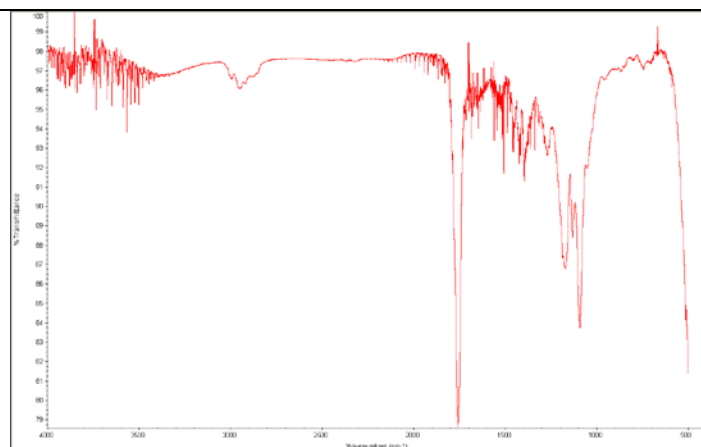
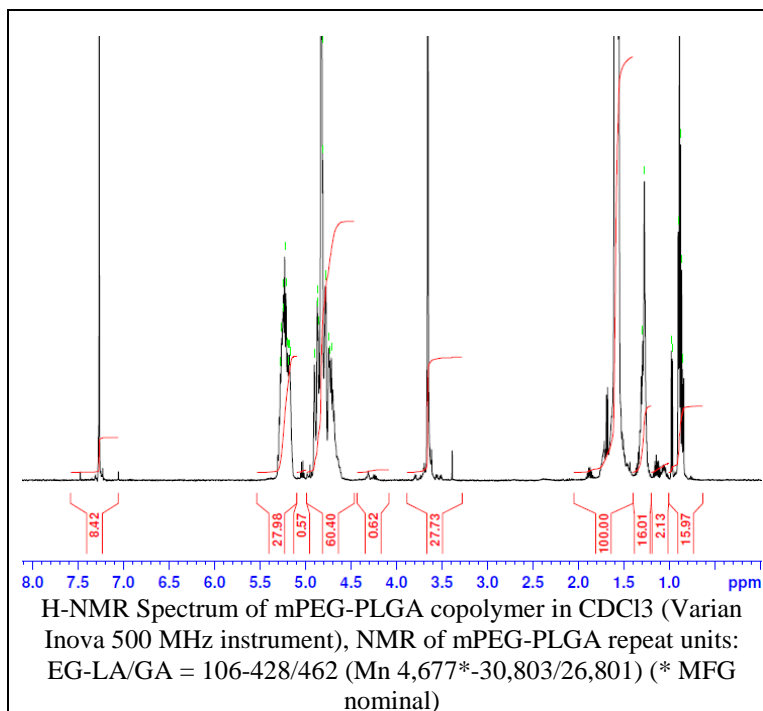


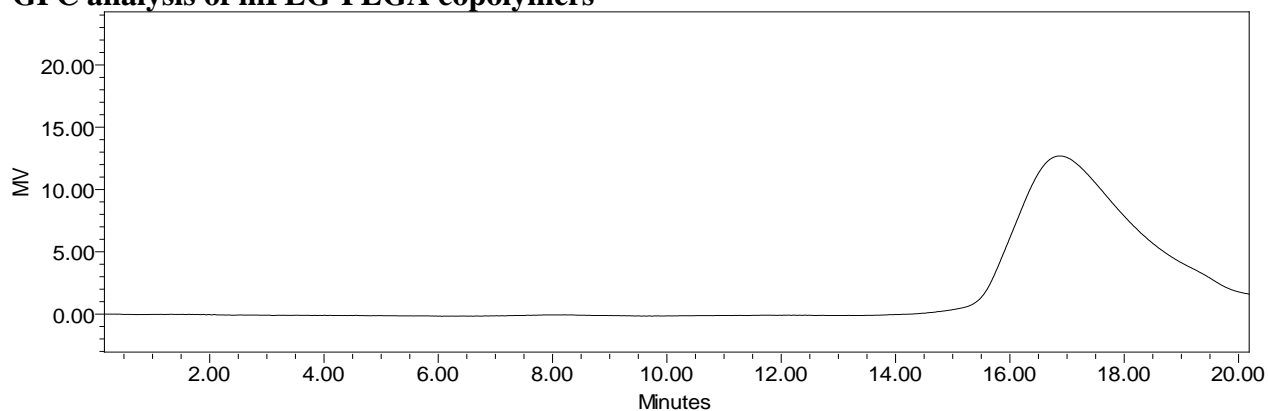
No. AK026 Certificate of Analysis

Product Name: Methoxy Poly(ethylene glycol)-Poly(lactide-co-glycolide) (5,000-55,000 Da)
(Lot#70119STR-B)



FTIR Analysis: Collected from cast-film on salt-plate placed in Protégé 460 Spectrometer (Nicolet) and analyzed in transmission E.S.P. mode.

• GPC analysis of mPEG-PLGA copolymers

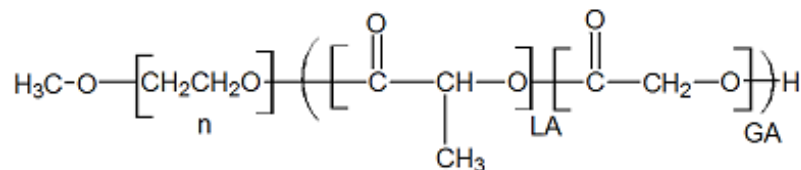


Analysis Method: Waters Breeze 2 system with 1 ml/min DCM flow across three Phenogel 5um columns (Phenomenex). Detection via refractive index, calibrated against polystyrene standards.

Polymer	M _n (from GPC)	M _w (from GPC)	PDI
mPEG-PLGA	43,511	56,549	1.30
mPEG5000 initiator*	4677*	5272*	1.13*

* - MFG provided Data

• Structure of mPEG-PLGA copolymers



Material provided for research use only. Not for human use.