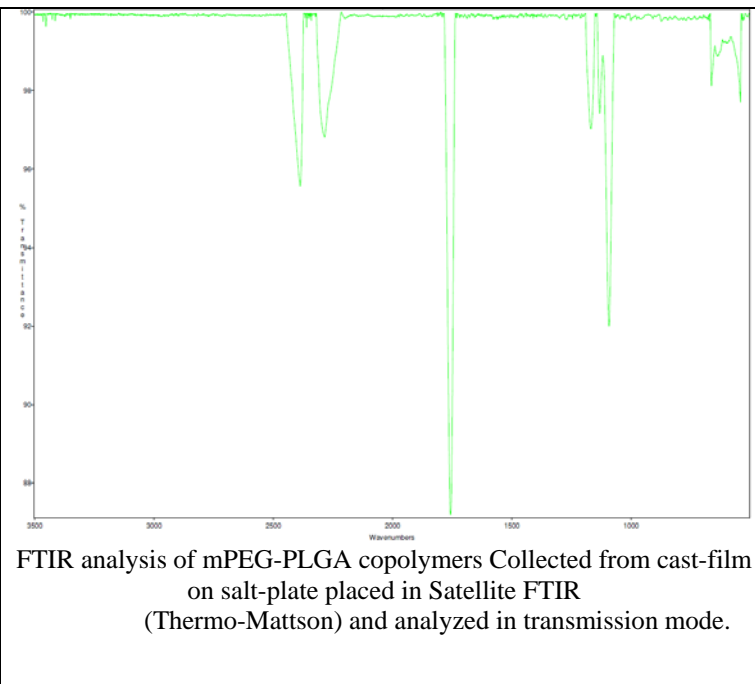
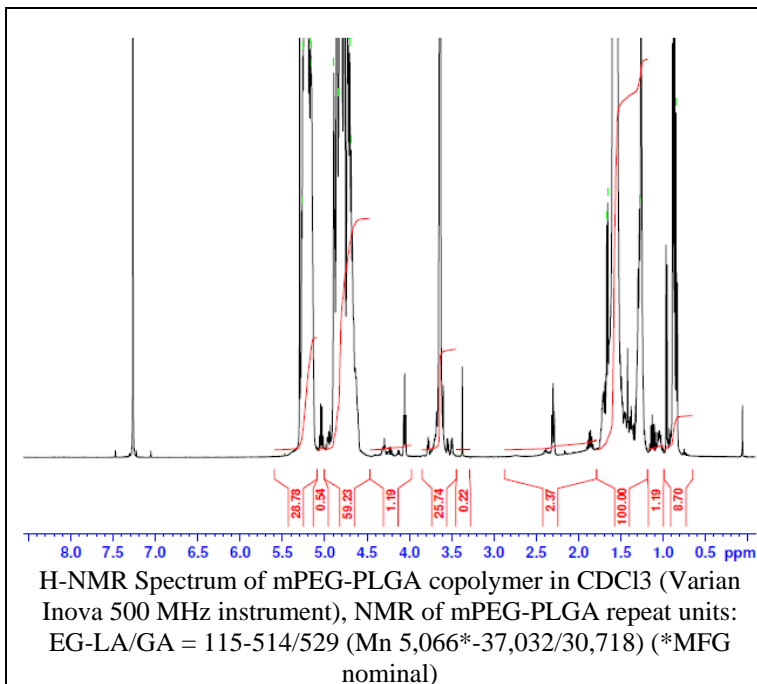
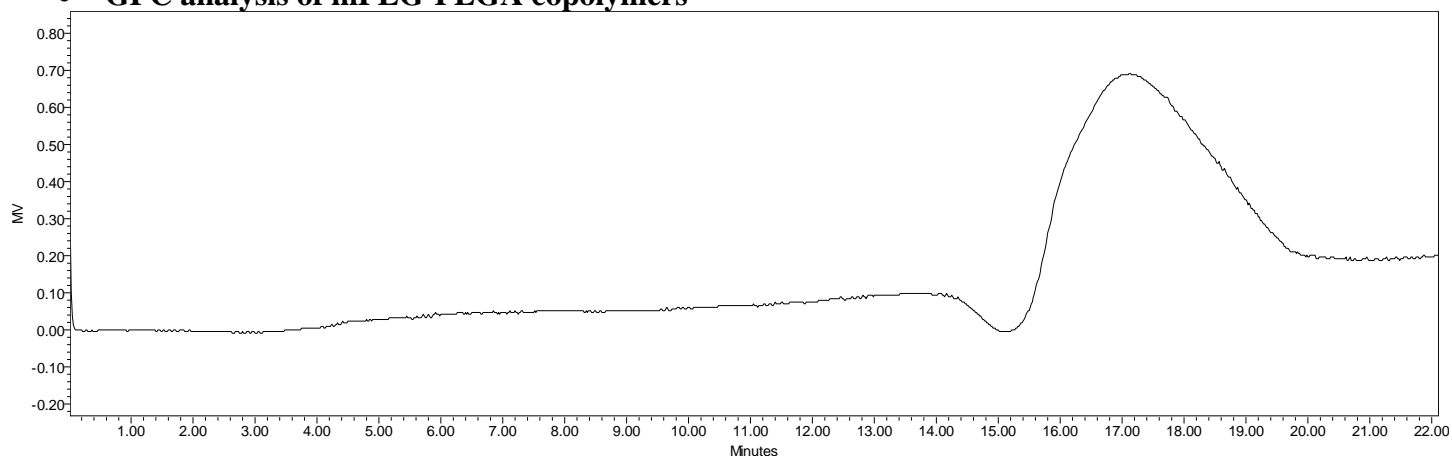


# No. AK026 Certificate of Analysis

Product Name: Methoxy Poly(ethylene glycol)-Poly(lactide-co-glycolide) (5,000-55,000 Da)  
 (Lot#: 60324MJK-A)



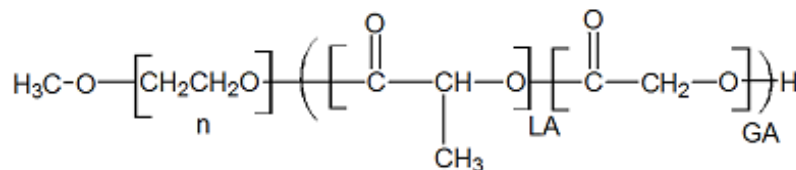
## • GPC analysis of mPEG-PLGA copolymers



Analysis Method: Waters Breeze 2 system with 1 ml/min DCM flow across three Phenogel 5um columns (Phenomenex). Detection via refractive index, calibrated against polystyrene standards.

Polymer	M <sub>n</sub> (from GPC)	M <sub>w</sub> (from GPC)	PDI
mPEG-PLGA	40,500	54,940	1.36
mPEG5000 initiator*	5,488	5,847	1.06

## • Structure of mPEG-PLGA copolymers



Material provided for research use only. Not for human use.

PolySciTech Division of Akina, Inc. | 3495 Kent Avenue, West Lafayette, IN 47906

765-464-0390 | www.polysciotech.com

For research use only.