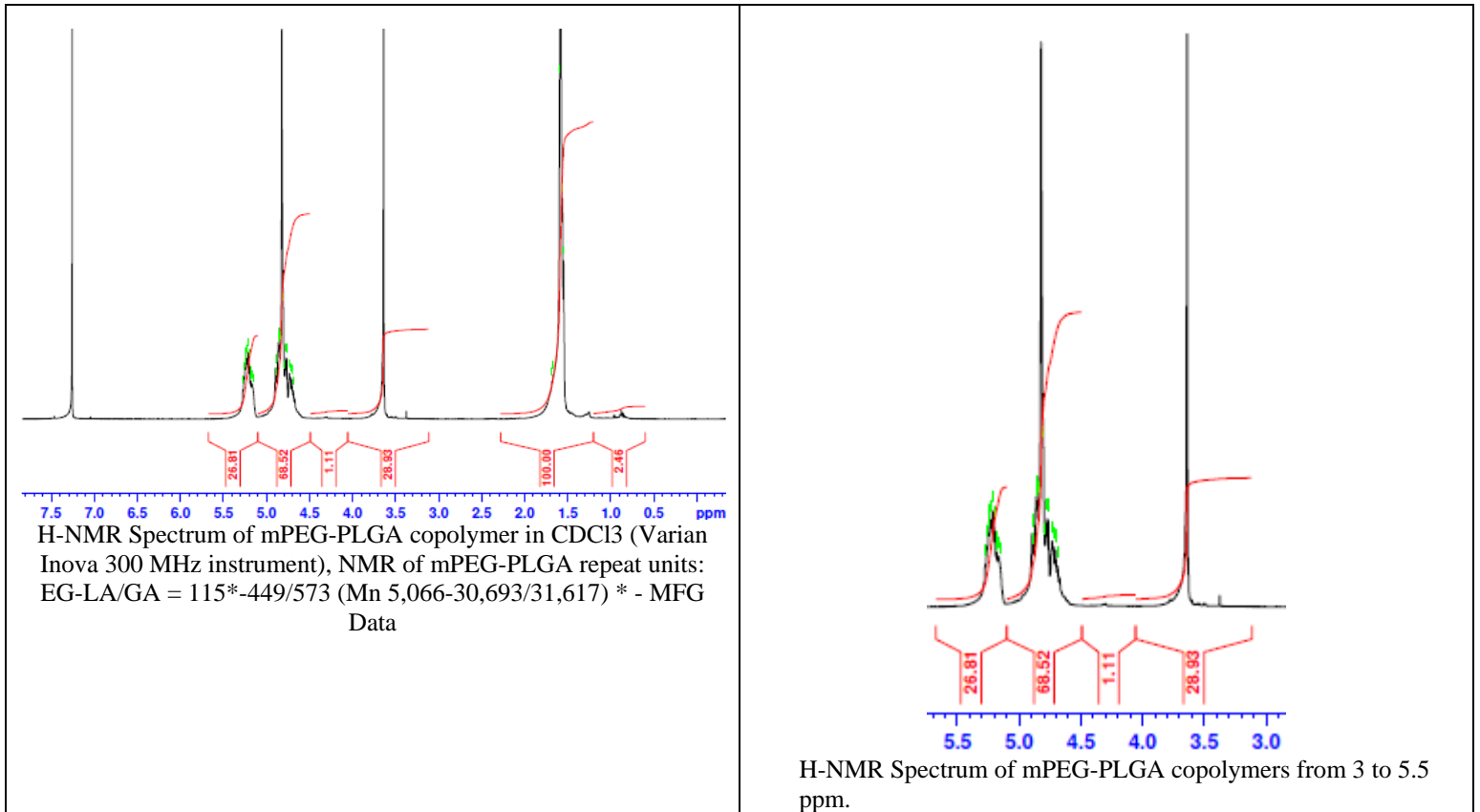


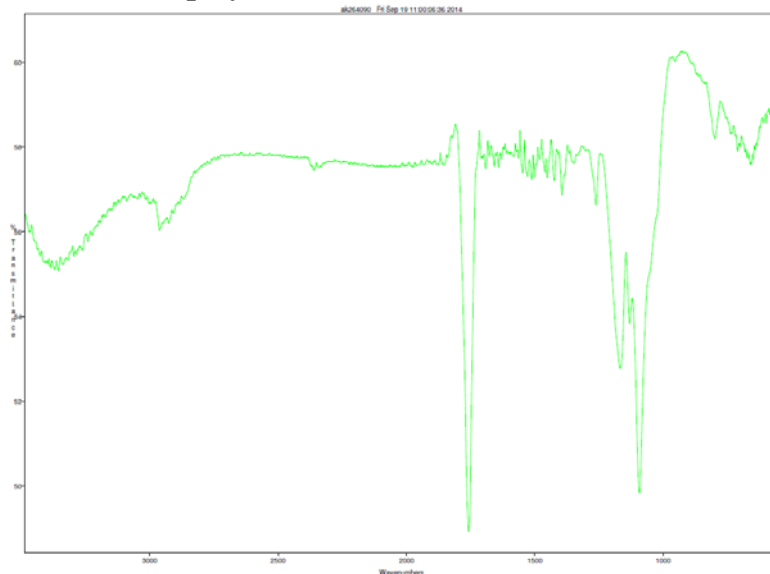
No. AK26 Certificate of Analysis

Product Name: Methoxy Poly(ethylene glycol)-Poly(lactide-co-glycolide) (5,000-55,000 Da)

(Lot#: 40902AHT)



- FTIR analysis of mPEG-PLGA copolymers**



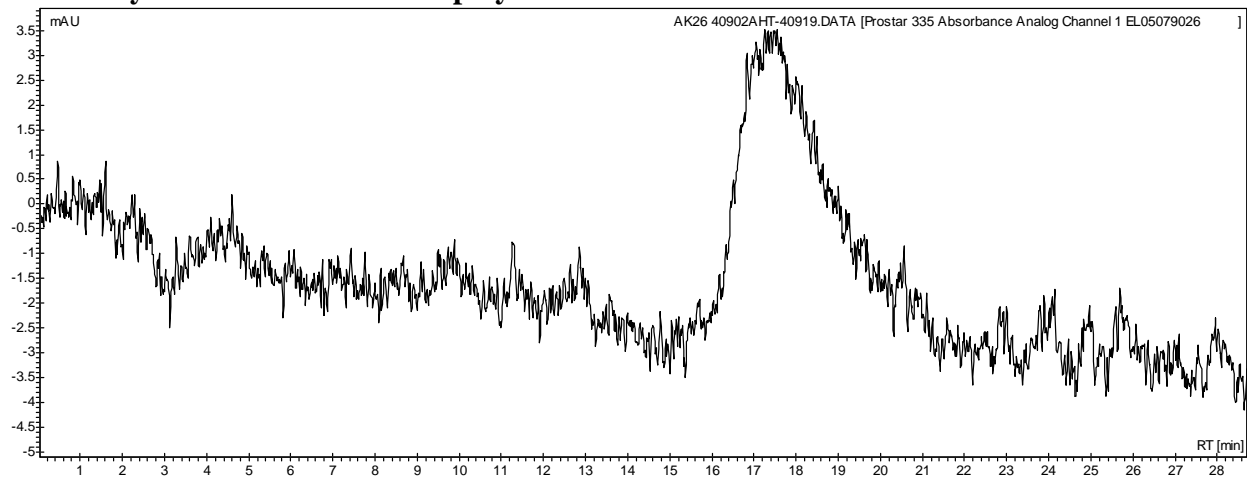
Collected from cast-film on salt-plate placed in Satellite FTIR (Thermo-Mattson) and analyzed in transmission mode.

Material provided for research use only. Not for human use.

PolySciTech Division of Akina, Inc. | 3495 Kent Avenue, West Lafayette, IN 47906
765-464-0390 | www.polysciotech.com

For research use only.

- **GPC analysis of mPEG-PLGA copolymers**



Analysis Method: Varian Prostar system with 1 ml/min DCM flow across two Phenogel 5 μ m columns and one PLgel Resipore (Agilent). Detection via UV/Vis, calibrated against polystyrene standards (*PEG standards).

Polymer	M _n (from GPC)	M _w (from GPC)	PDI
mPEG-PLGA	49,787	76,992	1.55
mPEG5000 initiator*	5,301	5,372	1.01

- **Structure of mPEG-PLGA copolymers**

