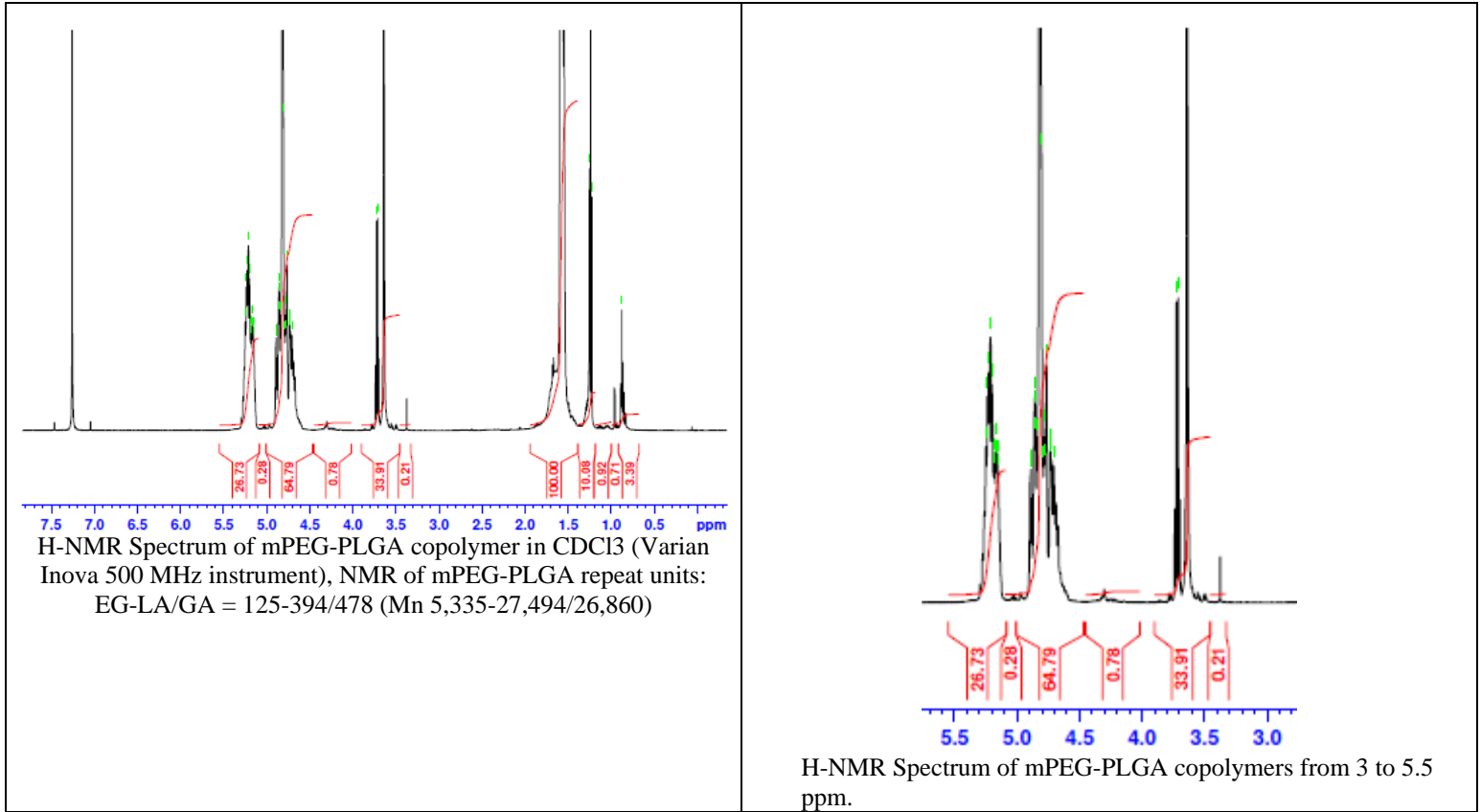
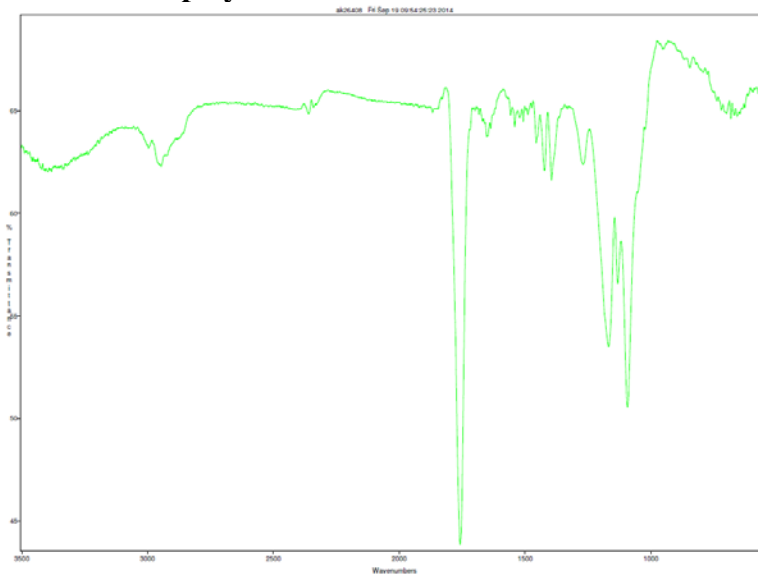


# No. AK26 Certificate of Analysis

Product Name: Methoxy Poly(ethylene glycol)-Poly(lactide-co-glycolide) (5,000-55,000 Da)  
 (Lot#: 40828BAK)



- FTIR analysis of mPEG-PLGA copolymers**



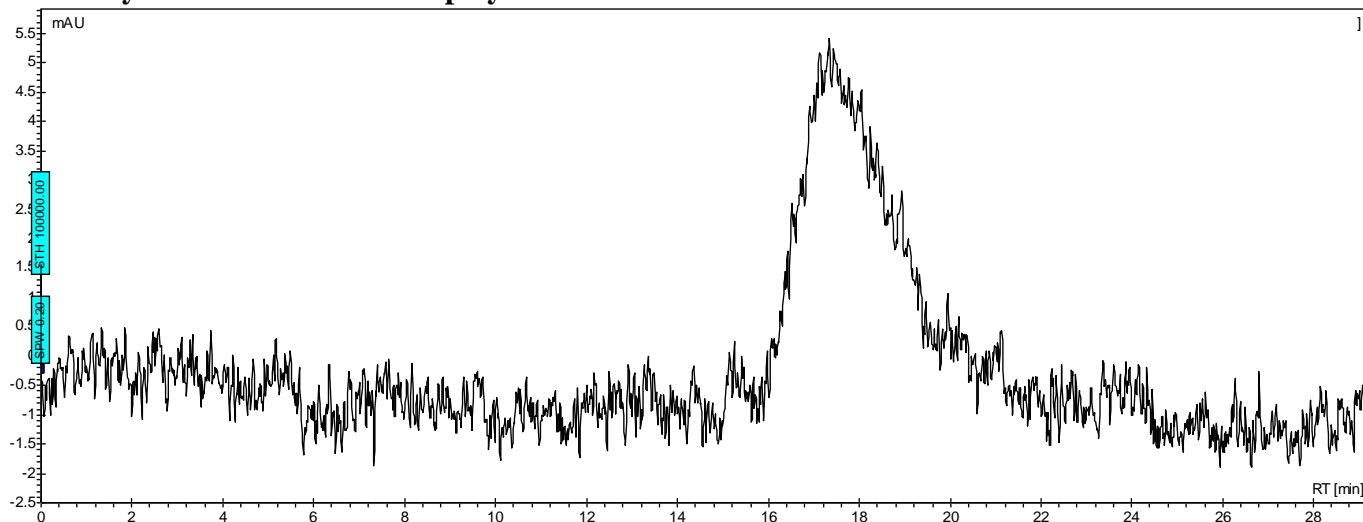
Collected from cast-film on KBR salt-plate placed in Satellite FTIR (Thermo-Mattson) and analyzed in transmission mode.

Material provided for research use only. Not for human use.

PolySciTech Division of Akina, Inc. | 3495 Kent Avenue, West Lafayette, IN 47906  
 765-464-0390 | www.polysciotech.com

For research use only.

- GPC analysis of mPEG-PLGA copolymers



Analysis Method: Varian Prostar system with 1 ml/min DCM flow across two Phenogel 5 $\mu$ m columns and one PLgel Resipore (Agilent). Detection via UV/Vis, calibrated against polystyrene standards (\*PEG standards).

Polymer	M <sub>n</sub> (from GPC)	M <sub>w</sub> (from GPC)	PDI
mPEG-PLGA	52,175	79,549	1.52
mPEG5000 initiator*	5,488	5,847	1.06

- Structure of mPEG-PLGA copolymers

