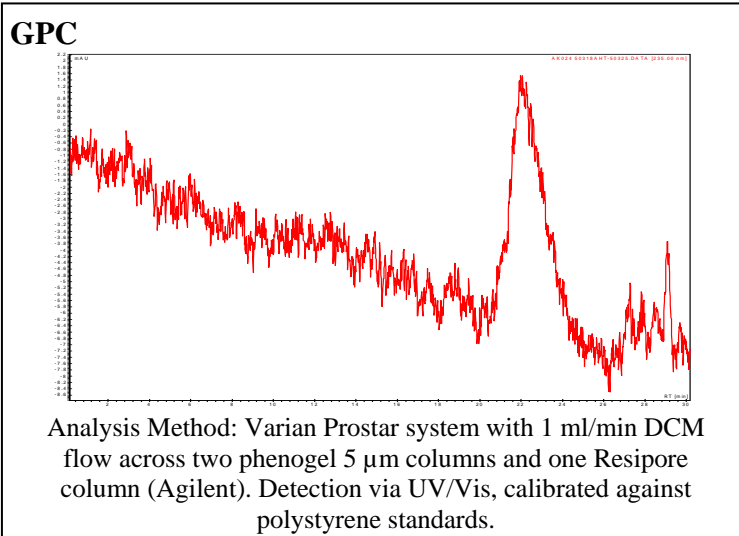
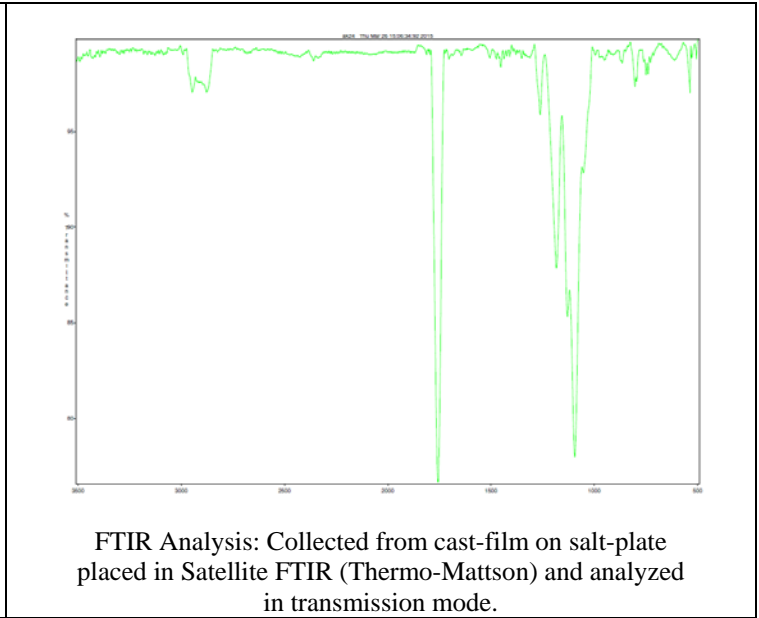
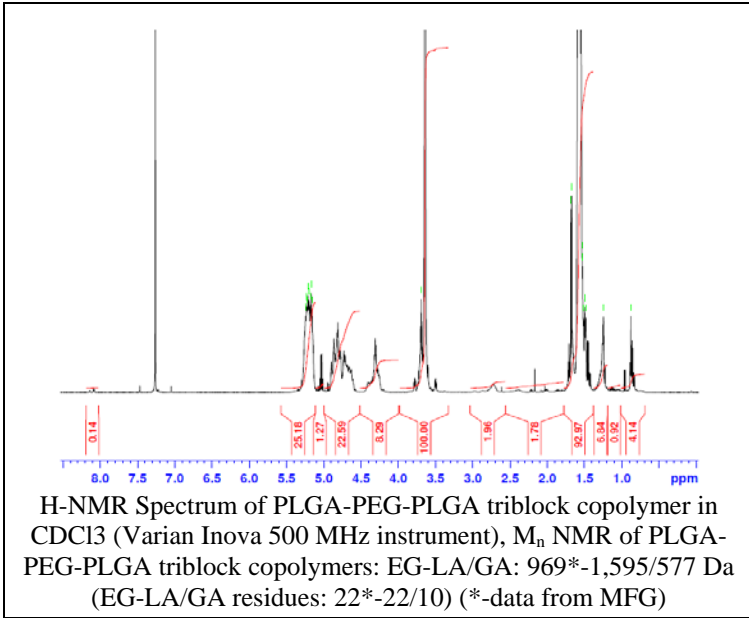


No. AK024 Certificate of Analysis

Product Name: Poly(lactic-co-glycolic acid)-*b*-Poly(ethylene glycol)-*b*-Poly(lactic-co-glycolic acid) copolymers ($M_n \sim 1,100-1,000-1,100$ Da, 3:1 LA:GA) (Lot# 50318AHT)



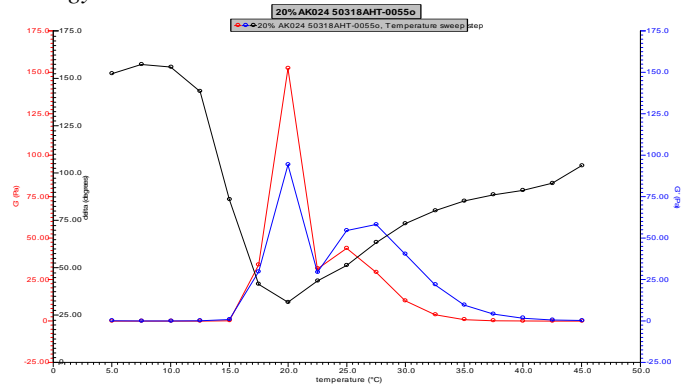
Polymer	M_n (GPC)	M_w (GPC)	PDI
PLGA-PEG-PLGA	4,725	5,504	1.16
PEG Precursor	M_n - 970*		

*Data provided by MFG.

Rheology

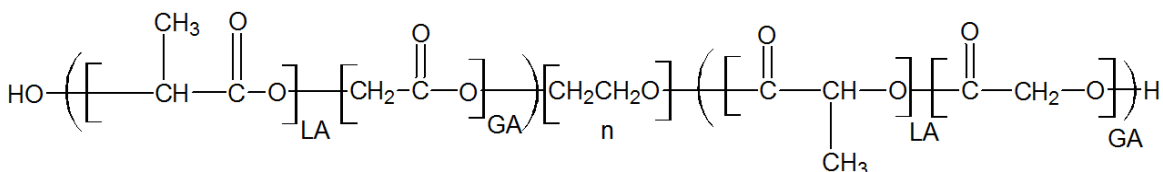
Rheology performed on AR550 (TA instruments) with 60mm 2degree cone on 20% w/v polymer in water dissolved overnight with stirring at 4C. Viscosity of solution at 0.1 (sec-1) and 5C was measured (1minute peak hold 5 second test intervals). Rheology performed by oscillating at constant 6.283 rad/s, 0.1% strain, in increments of 2.5C ranging from 5-45C with 3 minutes of temperature equilibration at each point.

Rheology Chart



Viscosity 20% w/v solution at 5C 0.03391 Pa.s

Structure



Material provided for research use only. Not for human use.

PolySciTech Division of Akina, Inc. | 3495 Kent Avenue, West Lafayette, IN 47906

765-464-0390 | www.polysciotech.com

For research use only.