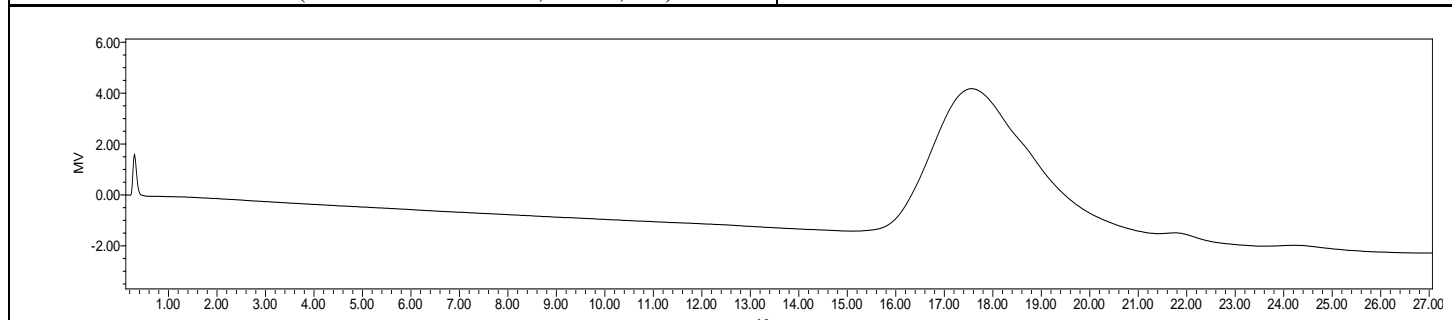
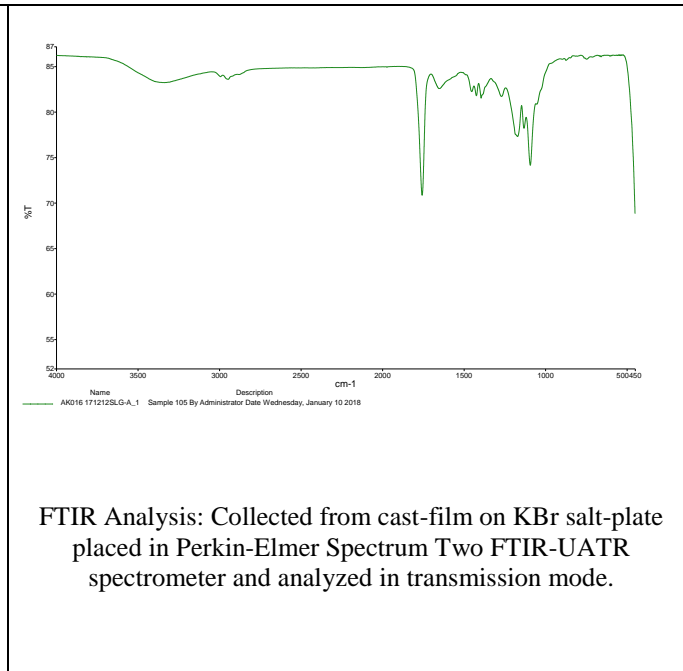
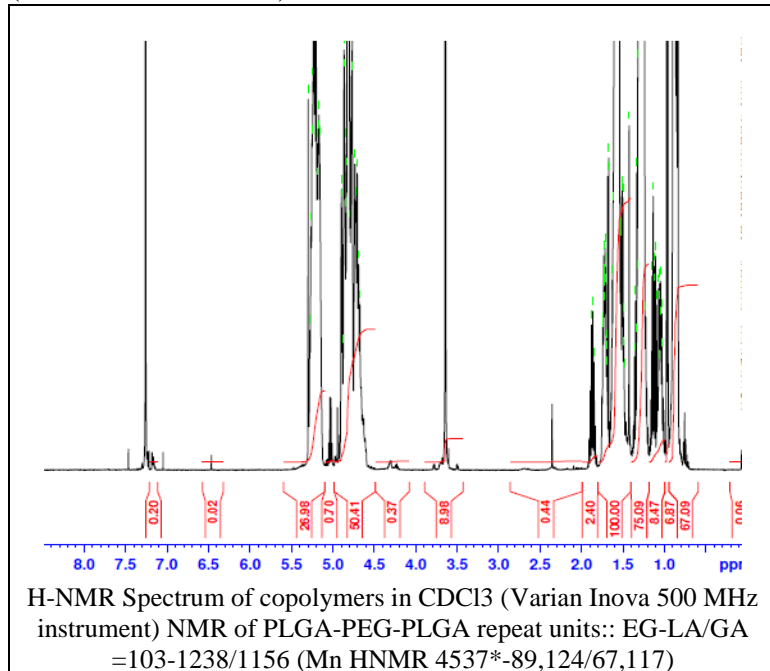


# No. AK016

# Certificate of Analysis



Product Name: Poly(lactic-co-glycolic acid)-*b*-Poly(ethylene glycol)-*b*-Poly(lactic-co-glycolic acid) copolymers (70,000-4,600-70,000,1:1 LA:GA)  
(Lot# 171212SLG-A)



Polymer	M <sub>n</sub> (from GPC)	M <sub>w</sub> (from GPC)	PDI
PLGA-PEG-PLGA	61,333	89,100	1.45
Mn PEG Precursor	4536*		

\*- from MFG data

## Structure of PLGA-PEG-PLGA copolymer

