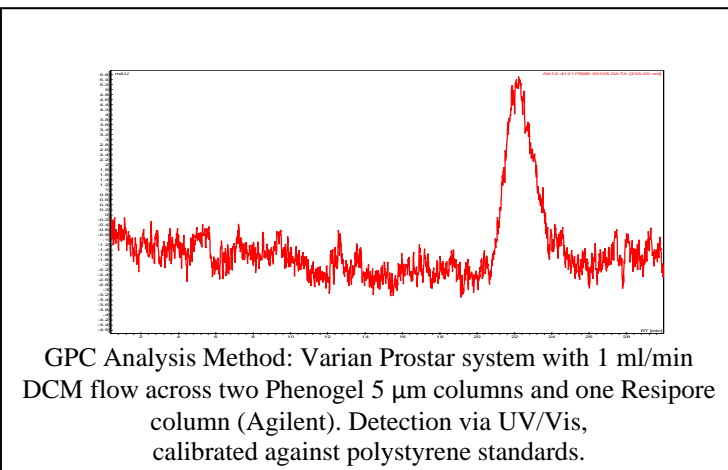
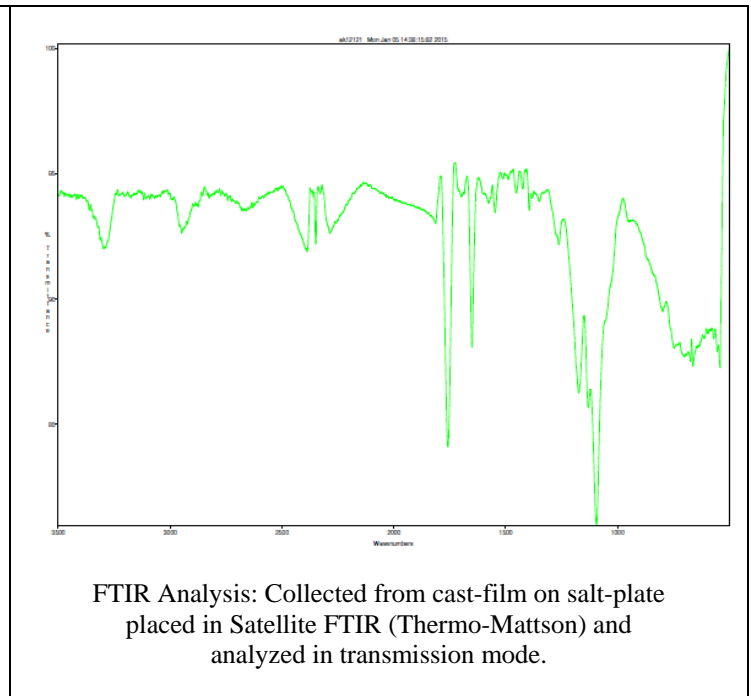
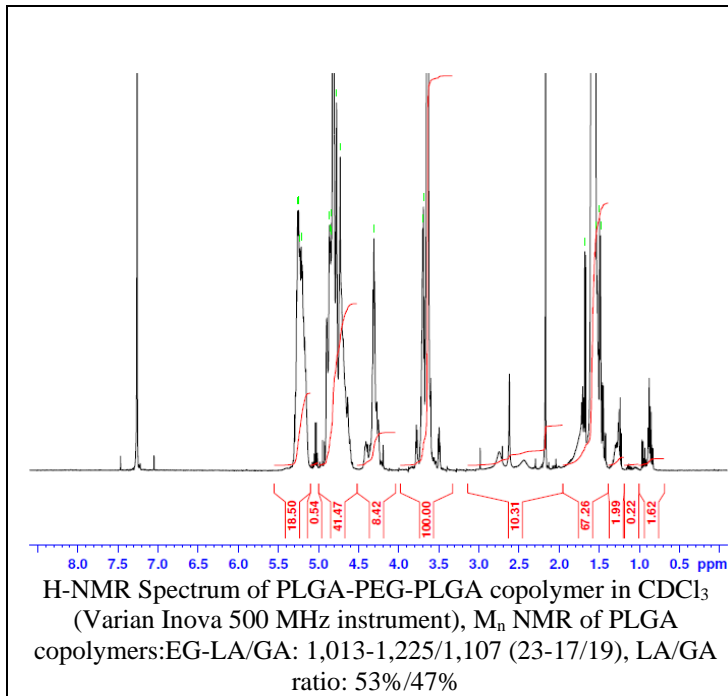


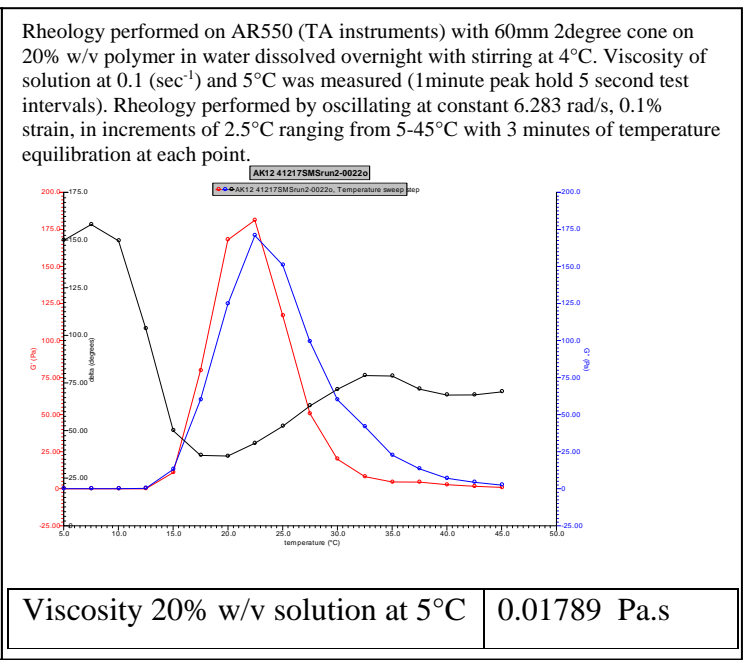
No. AK12 Certificate of Analysis

Product Name: Poly(lactic-co-glycolic acid)-*b*-Poly(ethylene glycol)-*b*-Poly(lactic-co-glycolic acid) copolymers (M_n 1,000:1,000:1,000 Da) (Lot# 41217SMS)

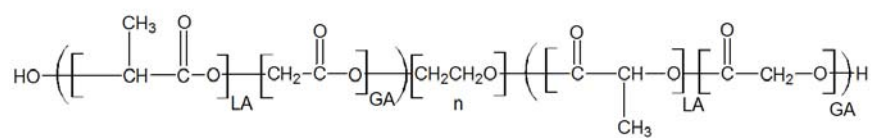


Polymer	M _n (GPC)	M _w (GPC)	PDI
PLGA-PEG-PLGA	4365	5495	1.26
PEG precursor*	M _n =1000		

*Data Provided by Manufacturer.



• Structure of PLGA-PEG-PLGA copolymer



Material provided for research use only. Not for human use.