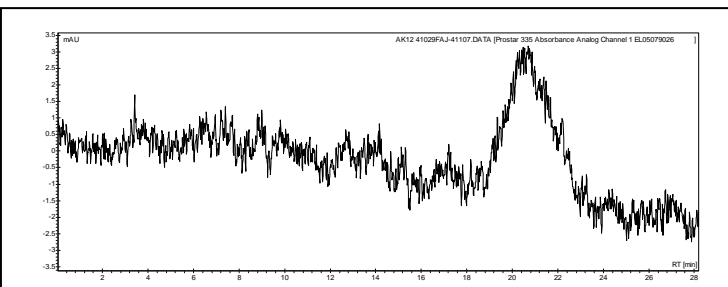
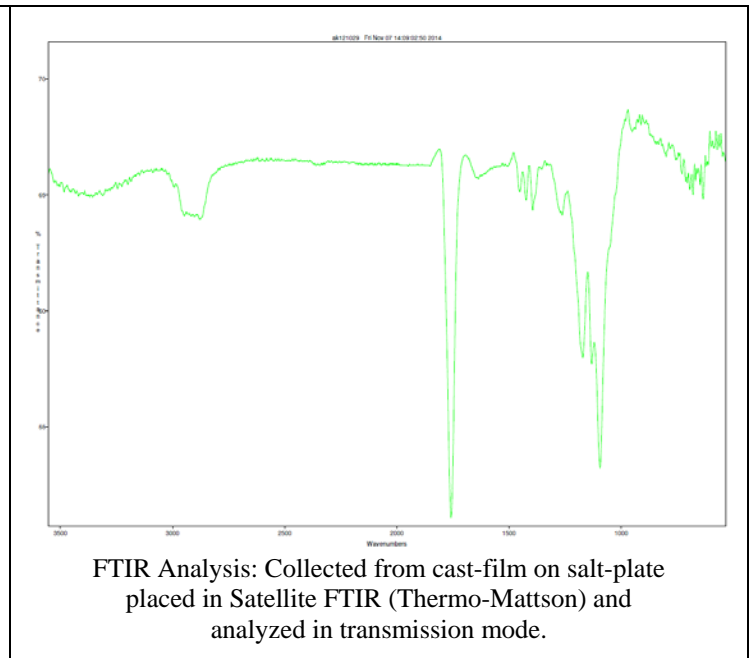
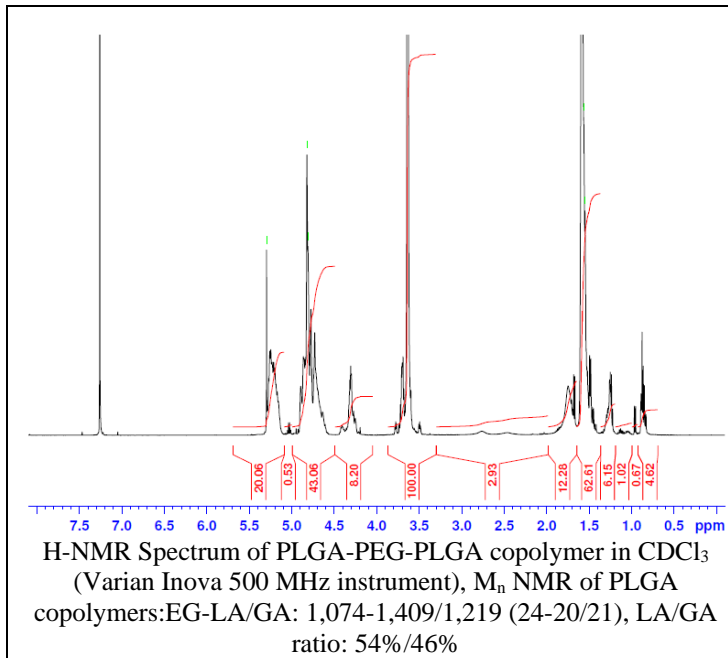


No. AK12 Certificate of Analysis

Product Name: Poly(lactic-co-glycolic acid)-*b*-Poly(ethylene glycol)-*b*-Poly(lactic-co-glycolic acid) copolymers (M_n 1,000:1,000:1,000 Da) (Lot# 41029FAJ)

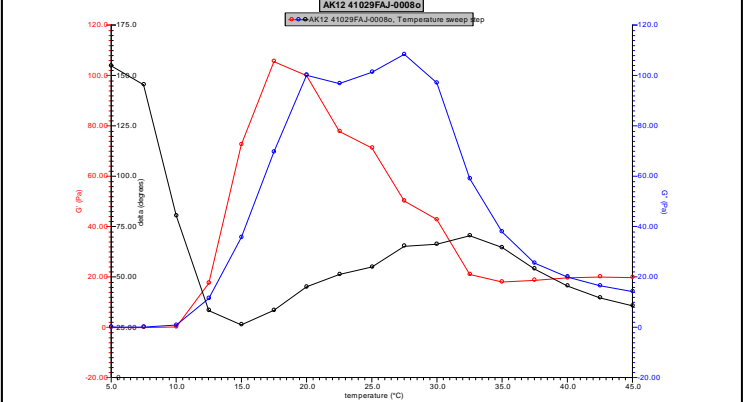


GPC Analysis Method: Varian Prostar system with 1 ml/min DCM flow across two Phenogel 5 μm columns and one Resipore column (Agilent). Detection via UV/Vis, calibrated against polystyrene standards.

Polymer	M_n (GPC)	M_w (GPC)	PDI
PLGA-PEG-PLGA	5,385	8,305	1.54
PEG precursor*	1,118	1,142	1.02

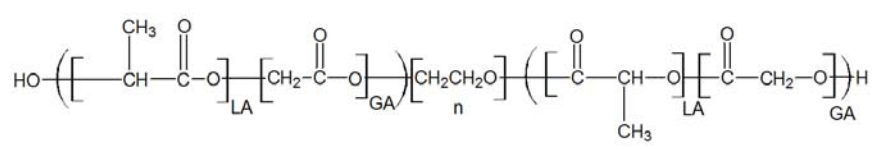
*calibrated against PEG standards.

Rheology performed on AR550 (TA instruments) with 60mm 2degree cone on 20% w/v polymer in water dissolved overnight with stirring at 4°C. Viscosity of solution at 0.1 (sec^{-1}) and 5°C was measured (1minute peak hold 5 second test intervals). Rheology performed by oscillating at constant 6.283 rad/s, 0.1% strain, in increments of 2.5°C ranging from 5-45°C with 3 minutes of temperature equilibration at each point.



Viscosity 20% w/v solution at 5°C 0.1557 Pa.s

• Structure of PLGA-PEG-PLGA copolymer



Material provided for research use only. Not for human use.