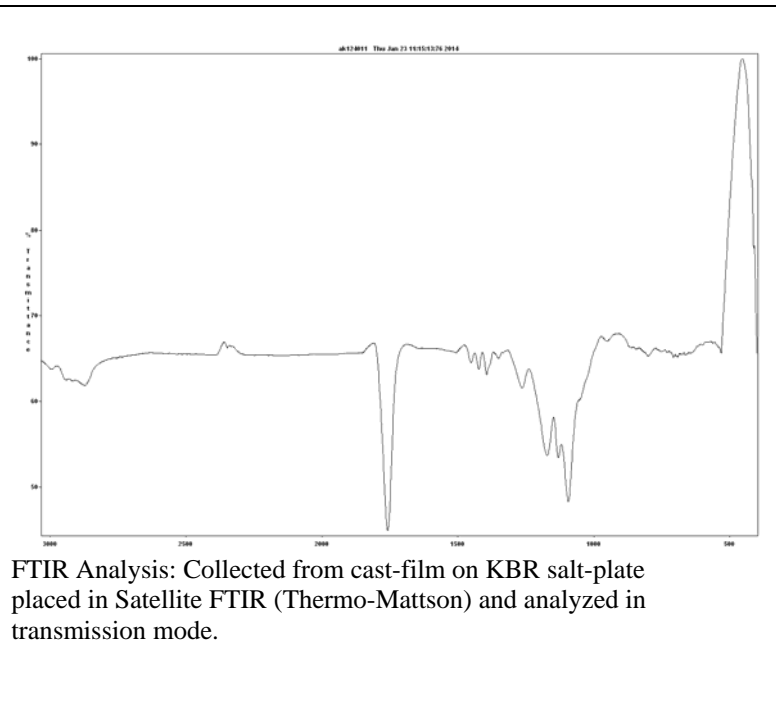
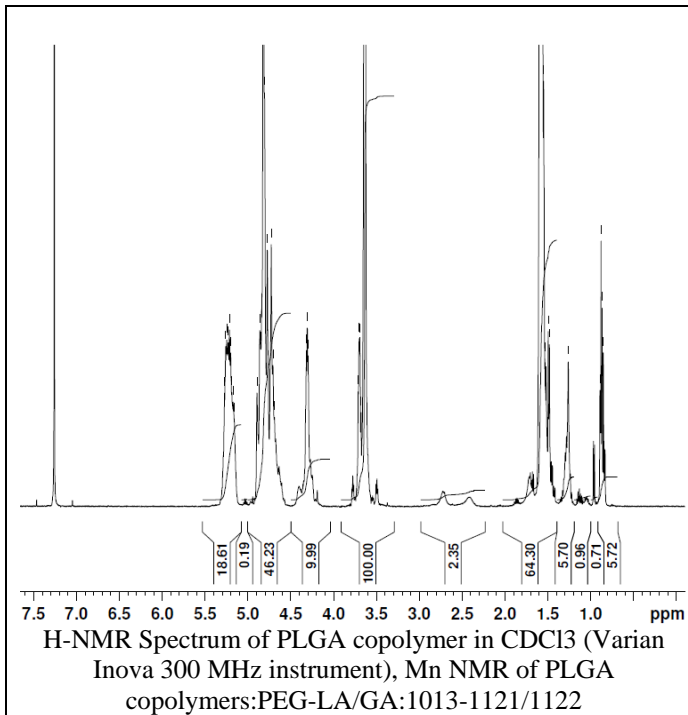
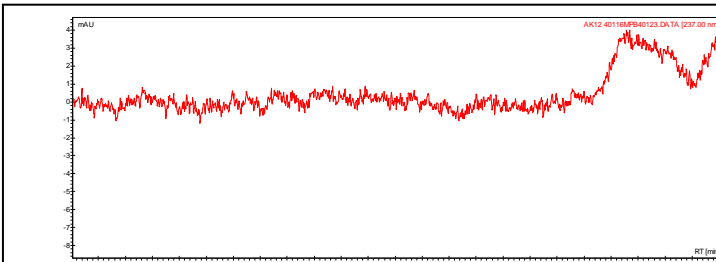


No. AK 12 Certificate of Analysis

Product Name: Poly(lactic-co-glycolic acid)-*b*-Poly(ethylene glycol)-*b*-Poly(lactic-co-glycolic acid) copolymers, M_n 1,000:1,000:1,000 Da
 Lot# 40116MPB



GPC



Analysis Method: Varian Prostar system with 1 ml/min DCM flow across one PLGel Mixed-D column and one PLGel Mixed-E column and one phenogel 5u column (Agilent). Detection via UV/Vis, calibrated against polystyrene standards.

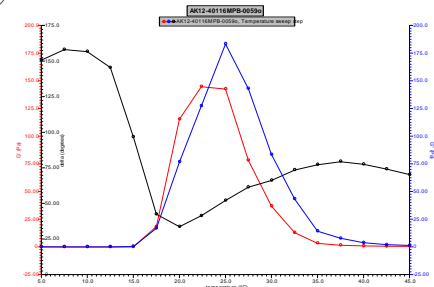
Polymer	M_n (GPC)	M_w (GPC)	PDI
PLGA-PEG-PLGA	3322	4709	1.42
PEG precursor	M_n -970*		

*-MFG data

Rheology

Rheology performed on AR550 (TA instruments) with 60mm 2degree cone on 20% w/v polymer in water dissolved overnight with stirring at 4C. Viscosity of solution at 0.1 (sec-1) and 5C was measured (1minute peak hold 5 second test intervals). Rheology performed by oscillating at constant 6.283 rad/s, 0.1% strain, in increments of 2.5C ranging from 5-45C with 3 minutes of temperature equilibration at each point.

Rheology Chart



Viscosity 20% w/v solution at 5C

1.081 Pa.s

- **Structure**

