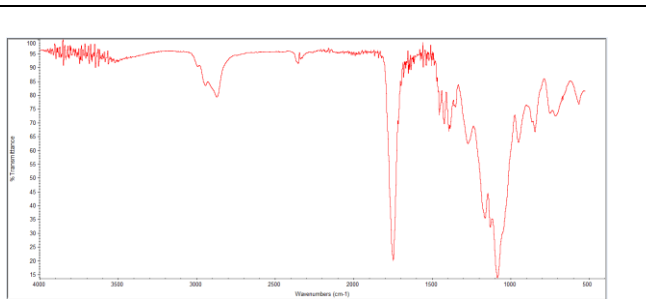
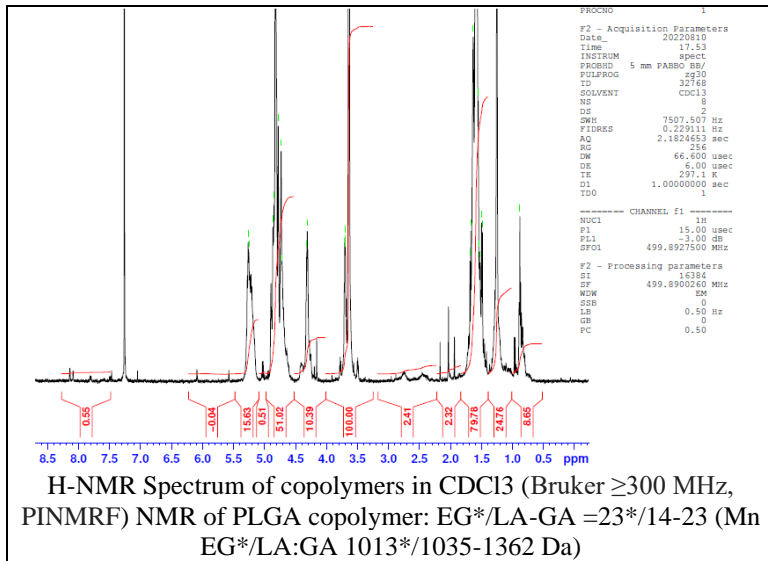
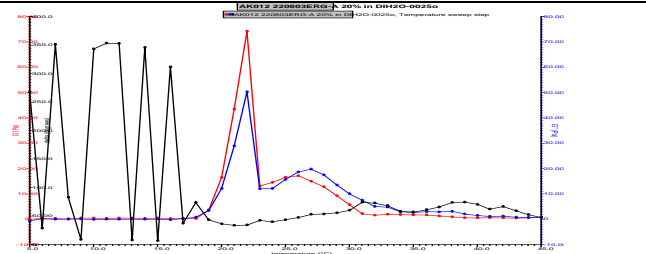
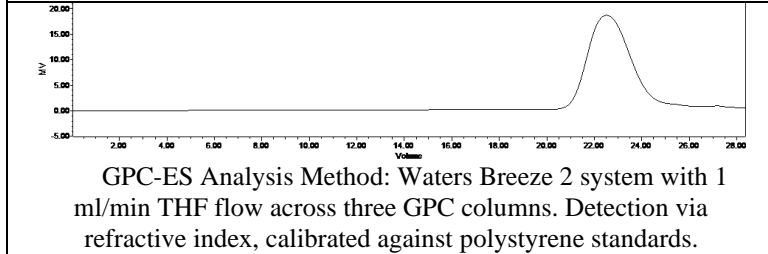


No. AK012 Certificate of Analysis

Product Name: Poly(lactide-co-glycolide)-*b*-Poly(ethylene glycol)-*b*-Poly(lactide-co-glycolide) ($M_w \sim 1,000:1,000:1,000$ Da) (Lot#: 220803ERG-A)



FTIR Analysis: Collected from Nicolet Avatar 380 spectrometer with ATR Smart Orbit and analyzed in transmission mode.



Rheology performed on AR2000 (TA instruments) with 60mm 2degree cone on 20% w/v polymer in deionized water dissolved over 24 hours with stirring at 4°C. Viscosity of solution at 0.1 (sec⁻¹) and 5°C was measured (1 minute peak hold 5 second test intervals). Rheology performed by oscillating at constant 6.283 rad/s, 0.1% strain, in increments of 1°C ranging from 5-45°C with 1 minutes of temperature equilibration at each point.

Polymer	M _n (from GPC)	M _w (from GPC)	PDI
PLGA-PEG	3306	4328	1.30
PEG-precursor*		1011*	

*- from MFG data

Viscosity 20% w/v solution at 5°C **.03479 Pa/s**

• **Structure of PLGA-PEG-PLGA copolymers:**

