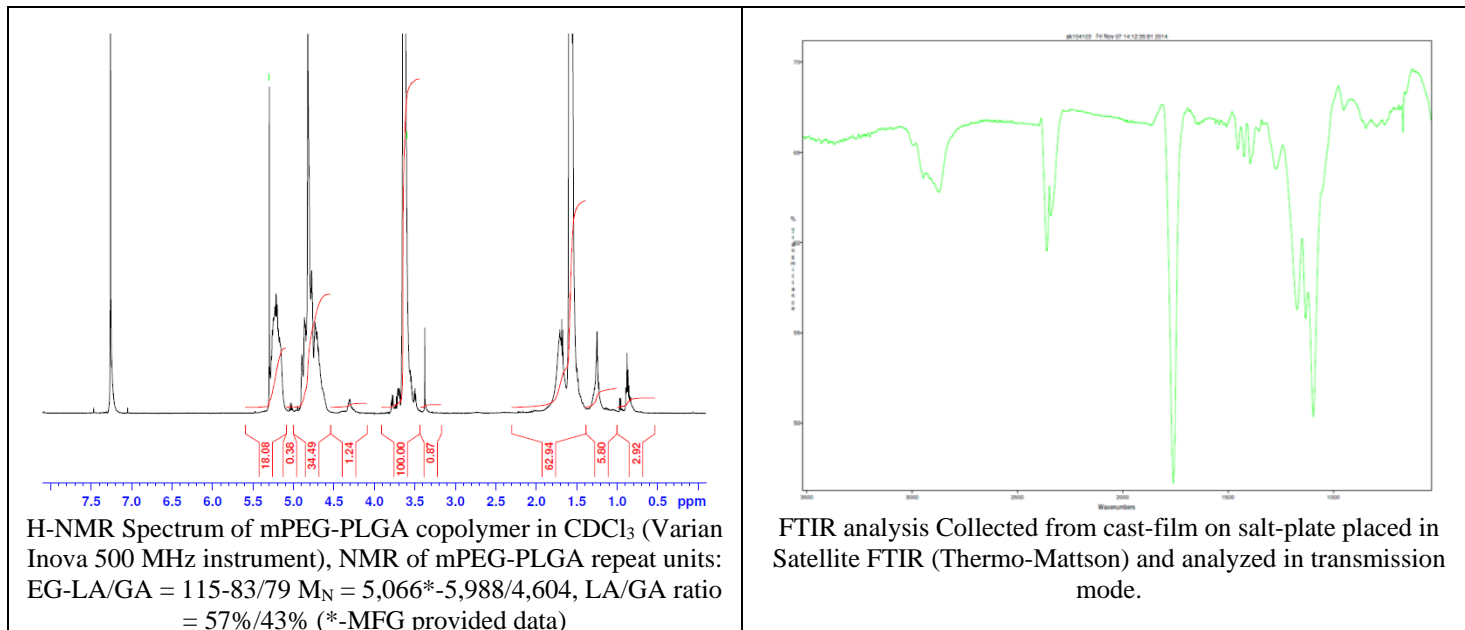
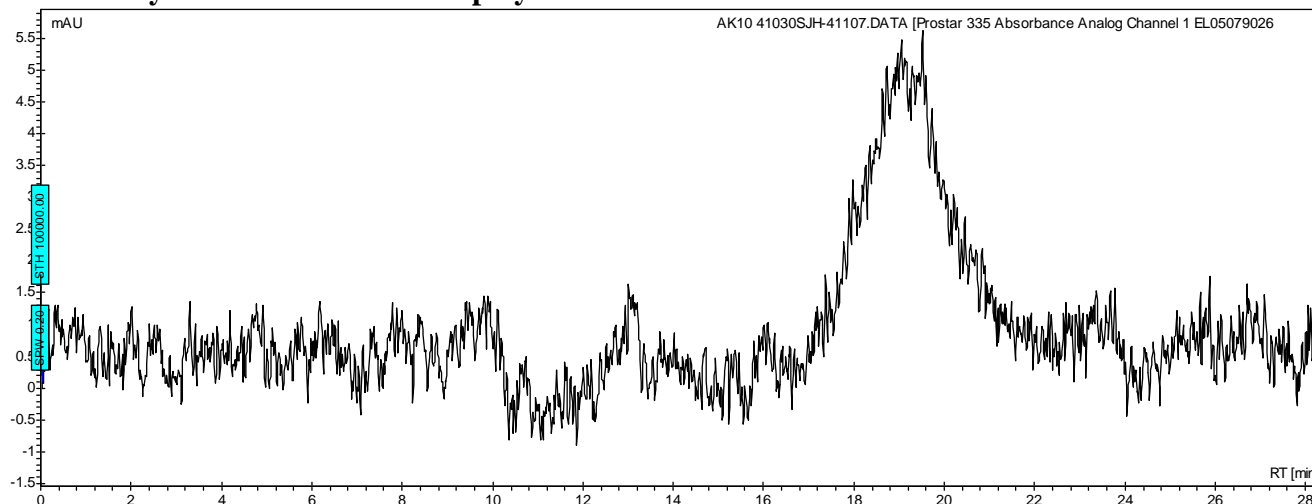


No. AK10 Certificate of Analysis

Product Name: Methoxy Poly(ethylene glycol)-*b*-Poly(D,L-lactic-co-glycolic) acid copolymer (M_w 5,000:10,000 Da, 1:1 LA:GA) (Lot#: 41030SJH)



• GPC analysis of mPEG-PLGA copolymers

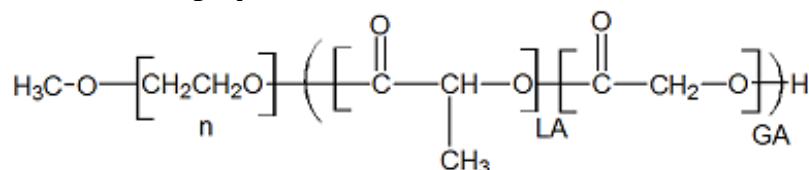


Analysis Method: Varian Prostar system with 1 ml/min DCM flow across two 5µm Phenogel columns and one Resipore column (Agilent). Detection via UV/Vis, calibrated against polystyrene standards.

Polymer	Mn (from GPC)	Mw (from GPC)	PDI
mPEG-PLGA	15,849	23,630	1.49
mPEG5000 initiator*	5,301	5,372	1.01

*calibrated against PEG standards

• Structure of mPEG-PLGA copolymers



Material provided for research use only. Not for human use.