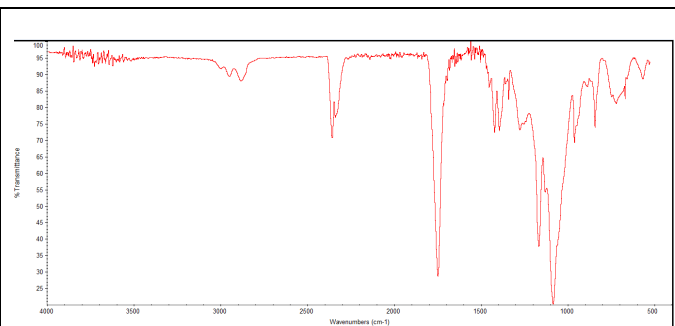
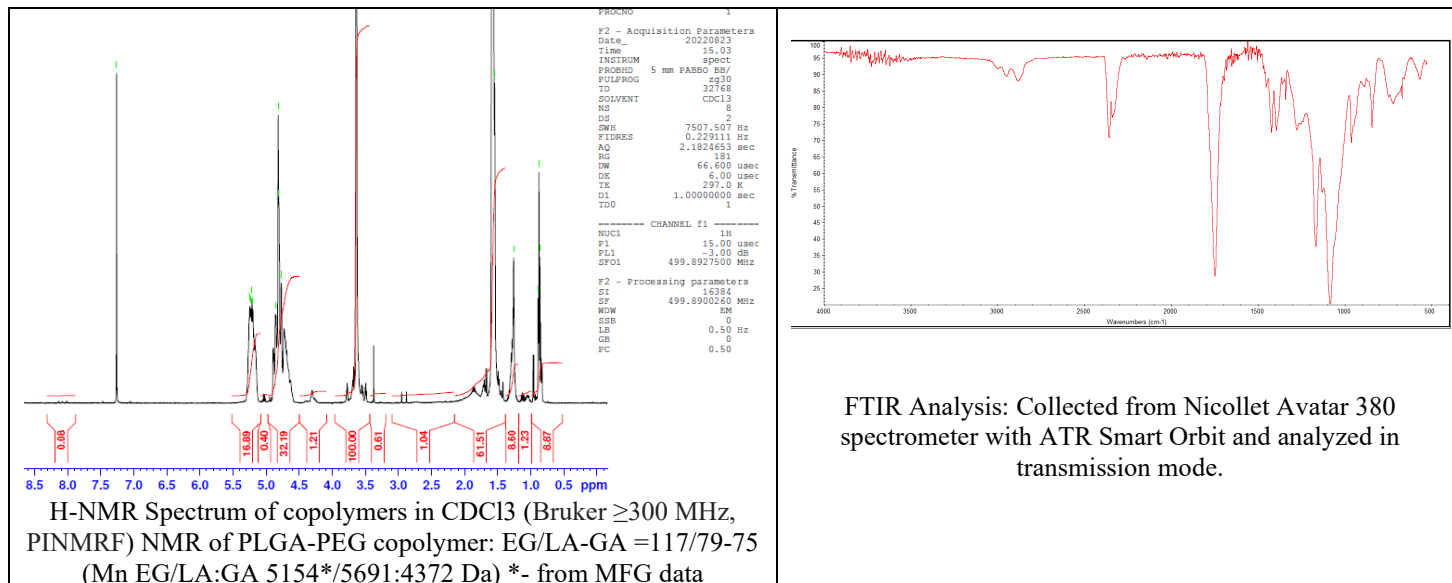


No. AK010

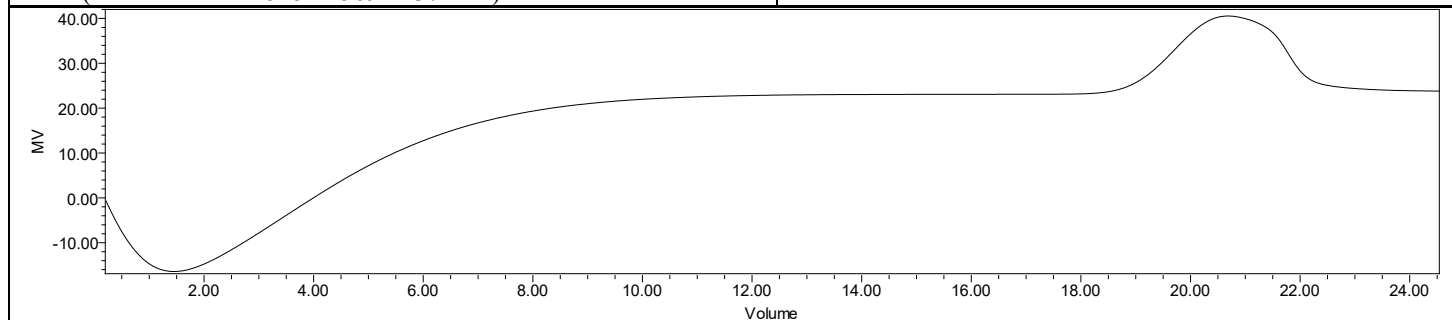
Certificate of Analysis



Product Name: Methoxy Poly(ethylene glycol)-*b*-Poly(D,L-lactide-co-glycolide)
(Mw ~ 5,000:10,000 Da, 50:50 LA:GA) (Lot#: 220817RAI-B)



FTIR Analysis: Collected from Nicolet Avator 380 spectrometer with ATR Smart Orbit and analyzed in transmission mode.



GPC-ES Analysis Method: Waters Breeze 2 system with 1 ml/min THF flow across three GPC columns. Detection via refractive index, calibrated against polystyrene standards.

Polymer	M _n (from GPC)	M _w (from GPC)	PDI
mPEG-PLGA	13,366	18,288	1.37
mPEG precursor*	5165*		

*- from MFG data

Structure of mPEG-PLGA copolymers

