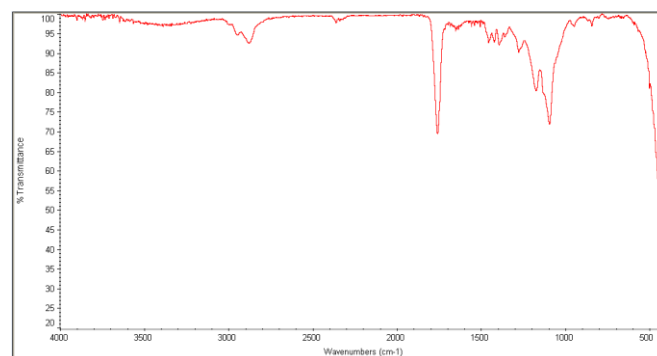
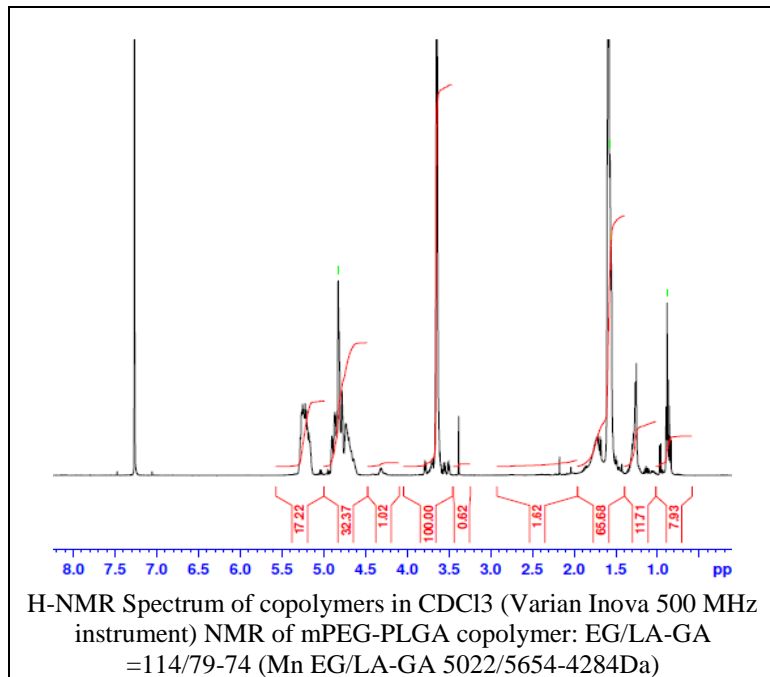


No. AK010

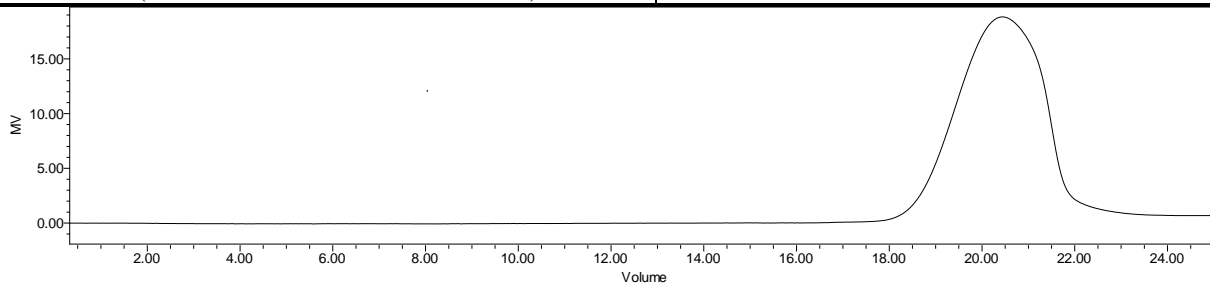
Certificate of Analysis



Product Name: Methoxy Poly(ethylene glycol)-*b*-Poly(D,L-lactide-co-glycolide) copolymer (Mn ~5,000:10,000 Da, 50:50 LA:GA) (Lot#: 180615RAI-A) (REV:A)



FTIR Analysis: Collected from cast-film on KBr salt-plate placed in Nicolet Avatar 320 spectrometer and analyzed in transmission mode.



GPC Analysis Method: Waters Breeze 2 system with 1 ml/min THF flow across three GPC columns. Detection via refractive index, calibrated against polystyrene standards.

Polymer	M _n (from GPC)	M _w (from GPC)	PDI
mPEG-PLGA	15,421	20,910	1.36
mPEG*	5026*	5921*	1.18*

*- from MFG data

• Structure of mPEG-PLGA copolymers

