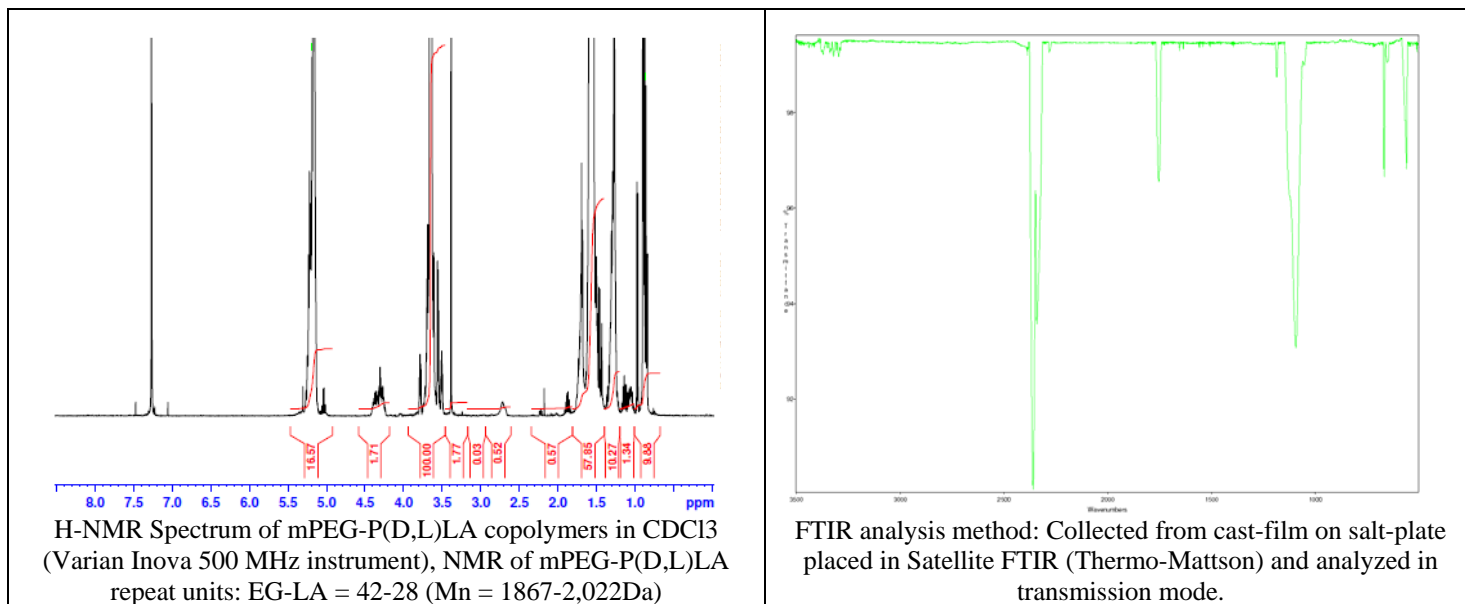


No. AK009

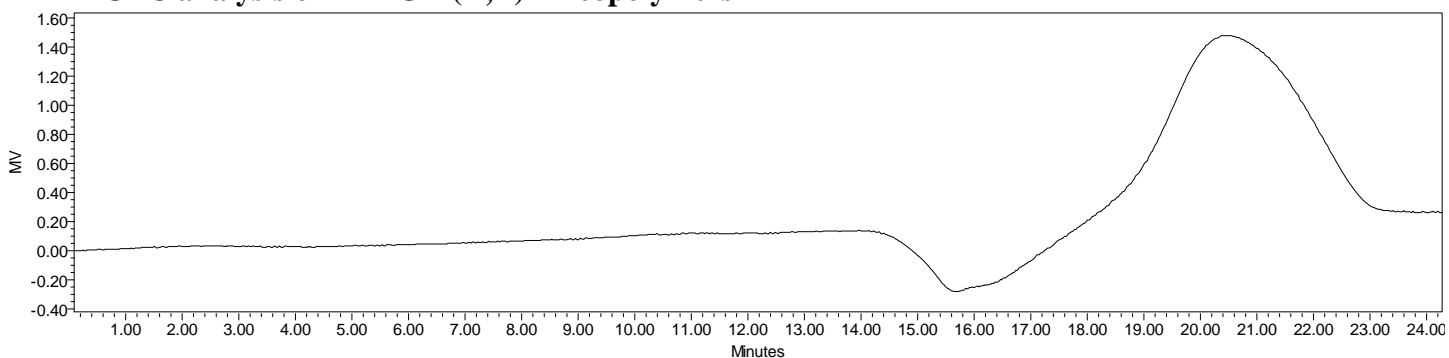
Certificate of Analysis



Product Name: Methoxy Poly(ethylene glycol)-*b*-Poly(D,L-lactide) copolymers
(MW ~2000-2200 Da) (Lot#: 60217FAJ-A)



• GPC analysis of mPEG-P(D,L)LA copolymers

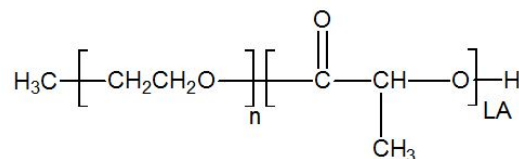


Analysis Method: Waters Breeze 2 with 1 ml/min DCM flow across two Phenogel 5 μm columns and one PLgel Resipore column (Agilent). Detection via refractive index, calibrated against polystyrene standards.

Polymer	Mn (from GPC)	Mw (from GPC)	PDI
mPEG-P(D,L)LA	4900	7350	1.50
mPEG 2000 precursor*	2,468	2,511	1.02

*-data previously collected GPC against polystyrene standards.

• Structure of mPEG-P(D,L)LA copolymers



Material provided for research use only. Not for human use.

PolySciTech Division of Akina, Inc. | 3495 Kent Avenue, West Lafayette, IN 47906
765-464-0390 | www.polysciotech.com

For research use only.