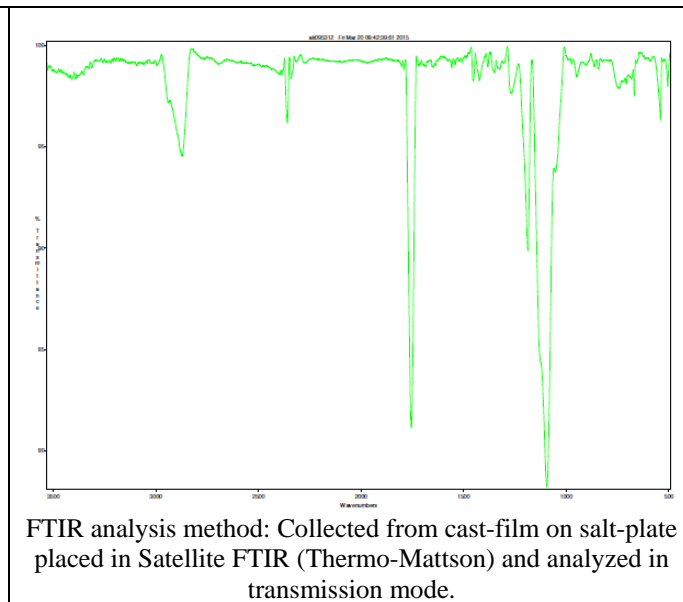
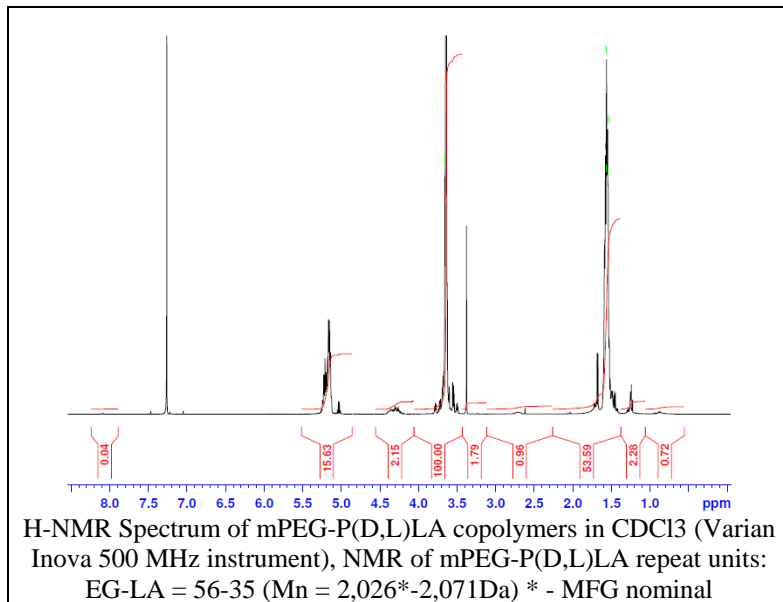


# No. AK009

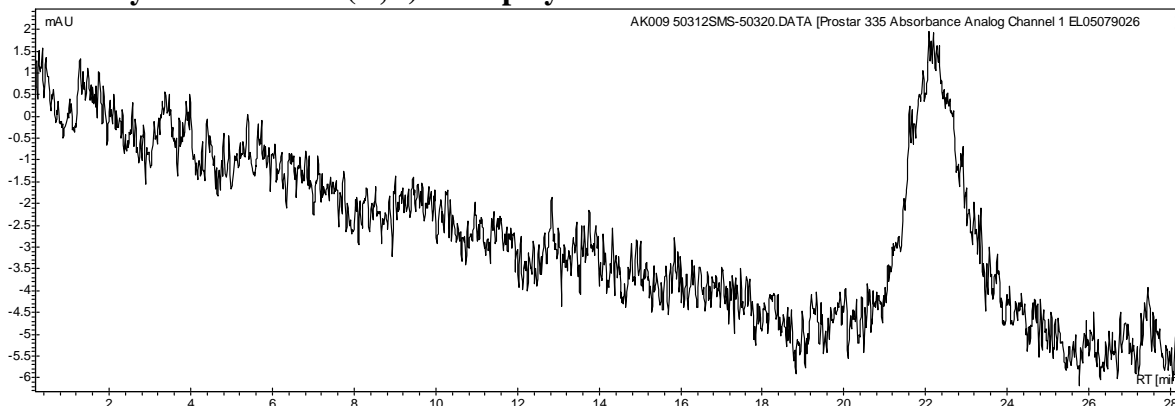
# Certificate of Analysis



Product Name: Methoxy Poly(ethylene glycol)-*b*-Poly(D,L-lactide) copolymers  
(MW ~2000-2200 Da) (Lot#: 50312SMS)



- **GPC analysis of mPEG-P(D,L)LA copolymers**

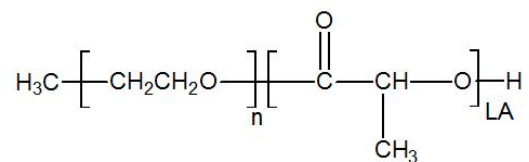


Analysis Method: Varian Prostar system with 1 ml/min DCM flow across two Phenogel 5 μm columns and one PLgel Resipore column (Agilent). Detection via UV/Vis, calibrated against polystyrene standards.

Polymer	Mn (from GPC)	Mw (from GPC)	PDI
mPEG-P(D,L)LA	4,432	5,576	1.26
mPEG 2000 precursor*	2,468	2,511	1.02

\*-data previously collected GPC against polystyrene standards.

- **Structure of mPEG-P(D,L)LA copolymers**



Material provided for research use only. Not for human use.