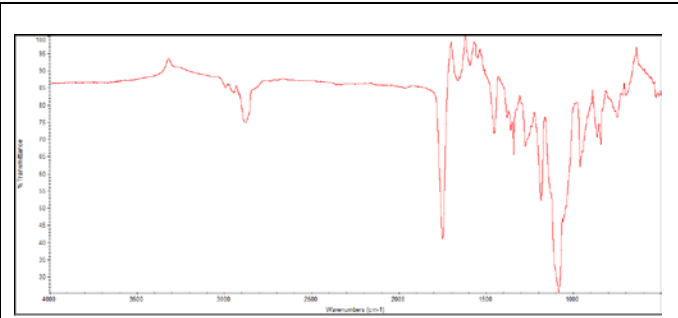
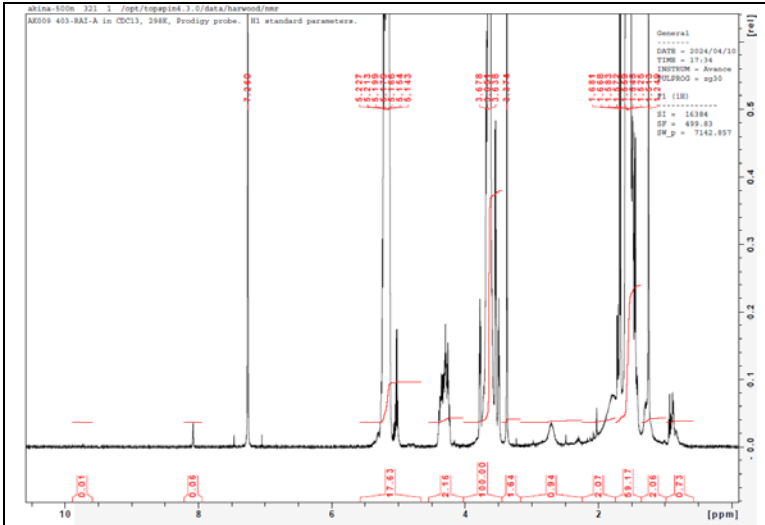


No. AK009

Certificate of Analysis

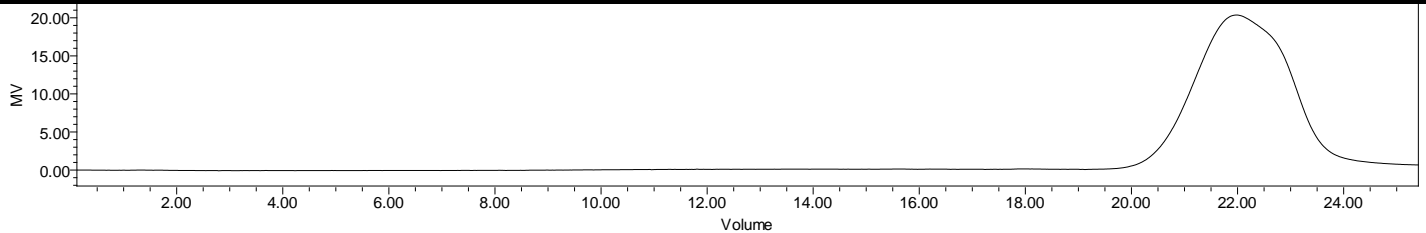


Product Name: Methoxy Poly(ethylene glycol)-*b*-Poly(D,L-lactide)
copolymers (Mw ~2000-2200 Da) (Lot#: 220630RAI-B)



FTIR Analysis: Collected from IS5 ID7-ATR spectrometer (Thermo Scientific) and analyzed in transmission mode.

H-NMR Spectrum of copolymers in CDCl₃ (Bruker ≥300 MHz, PINMRF) NMR of mPEG-PDLLA copolymer: EG*/LA =46*/32 (Mn EG*/LA 2026*/2336 Da)

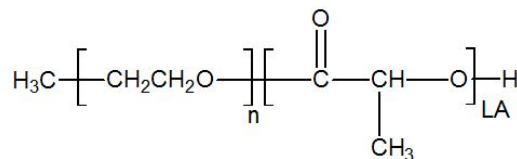


GPC-ES Analysis Method: Waters Breeze 2 system with 1 ml/min THF flow across three GPC columns. Detection via refractive index, calibrated against polystyrene standards.

Polymer	M _n (from GPC)	M _w (from GPC)	PDI
mPEG-PDLLA	4825	6411	1.33
PEG precursor*	M _n = 2044*		

*- from MFG data

• Structure of mPEG-P(D,L)LA copolymers



Approved By:
Amie Tyler
Quality Manager