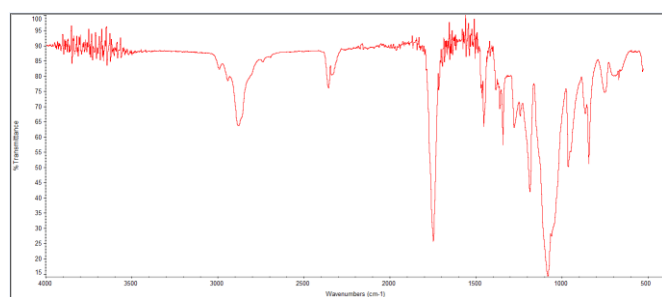
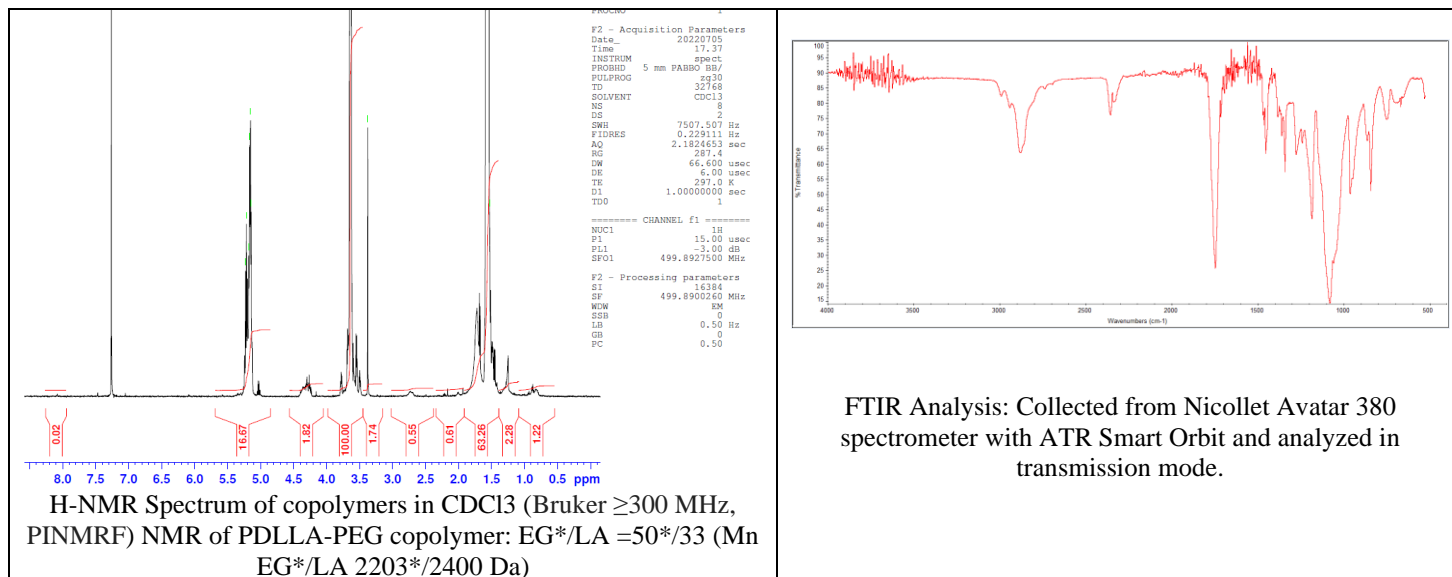


No. AK009

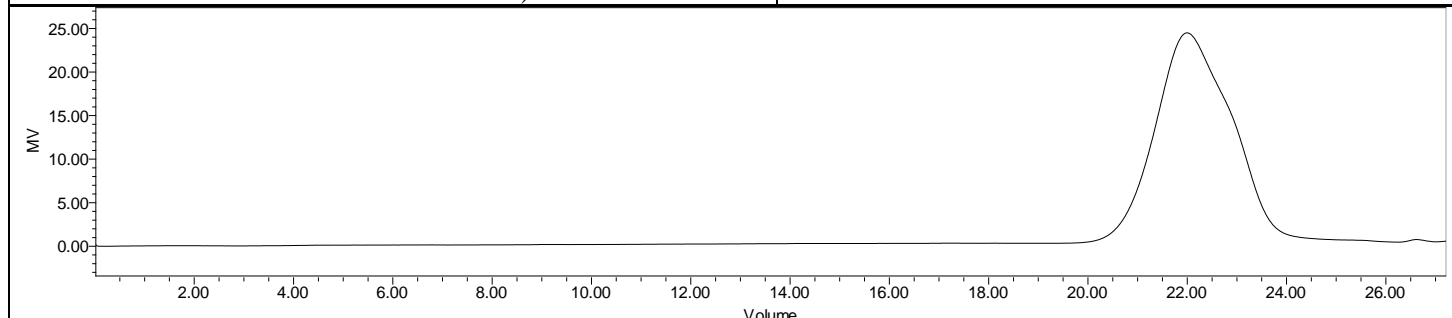
Certificate of Analysis



Product Name: Methoxy Poly(ethylene glycol)-*b*-Poly(D,L-lactide)
copolymers (MW ~2000-2200 Da) (Lot#: 220630RAI-B)



FTIR Analysis: Collected from Nicolet Avator 380 spectrometer with ATR Smart Orbit and analyzed in transmission mode.



GPC-ES Analysis Method: Waters Breeze 2 system with 1 ml/min THF flow across three GPC columns. Detection via refractive index, calibrated against polystyrene standards.

Polymer	M _n (from GPC)	M _w (from GPC)	PDI
PLGA-PEG	4876	6286	1.29
PEG precursor*		1951*	

*- from MFG data

• Structure of mPEG-P(D,L)LA copolymers

