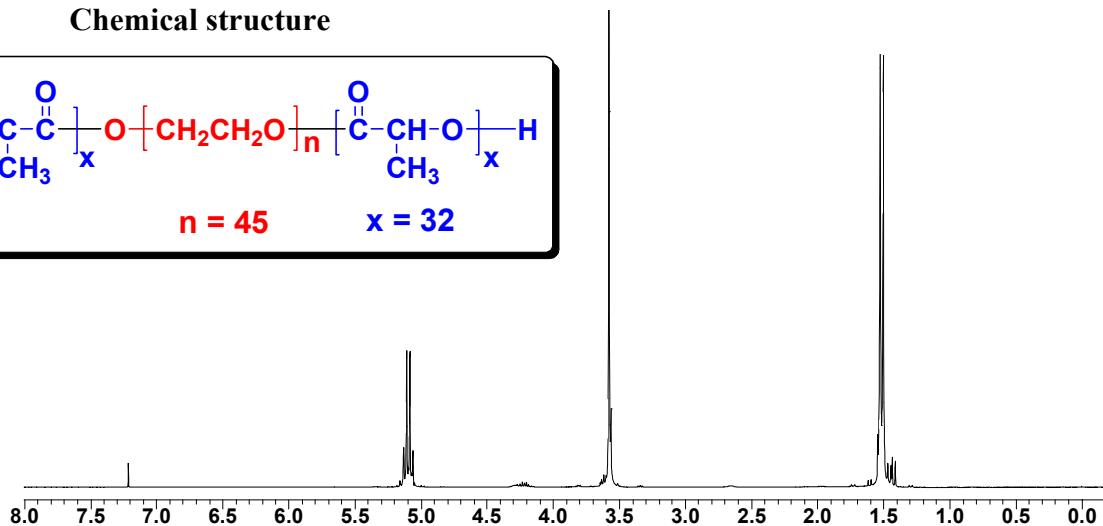
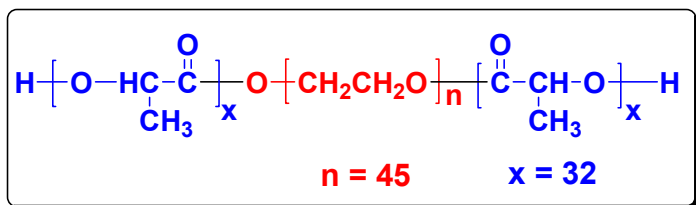


No. 8 Batch 1 Certificate of Analysis

Product name : Poly(L-lactide)-*b*-Poly(ethylene glycol)-*b*-Poly(L-lactide) copolymers

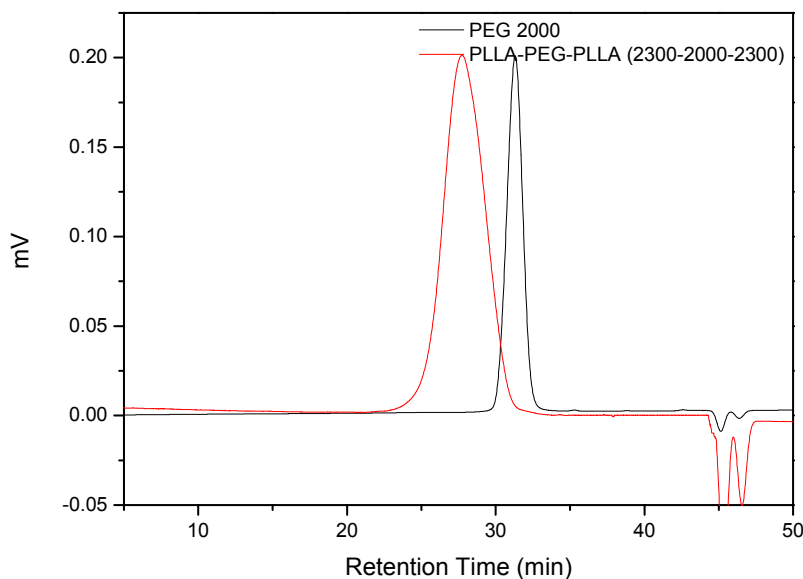
- ¹H-NMR spectrum of PLLA-PEG-PLLA triblock copolymers in CDCl₃ (Bruker 300 MHz).

Chemical structure



$M_{n, \text{NMR}}$ of PLLA-PEG-PLLA copolymers : 2300-2000-2300

- GPC curve of (a) PEG and (b) PLLA-PEG-PLLA diblock copolymers.



Analysis method : Futecs At-4000 GPC system (Shodex RI-101 detector)
columns (Shodex K-802, K-803 and K-804)
elution solvent (CHCl₃), flow rate (0.8 mL/min)

Name	M_n (GPC)	M_w (GPC)	M_w/M_n (PDI)
PEG (Initiator)	2687	2925	1.08
PLLA-PEG-PLLA (Copolymer)	2991	3615	1.20