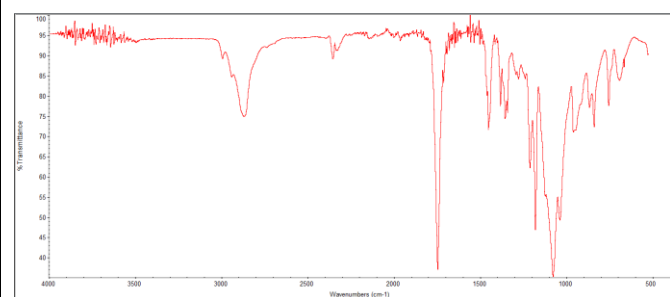
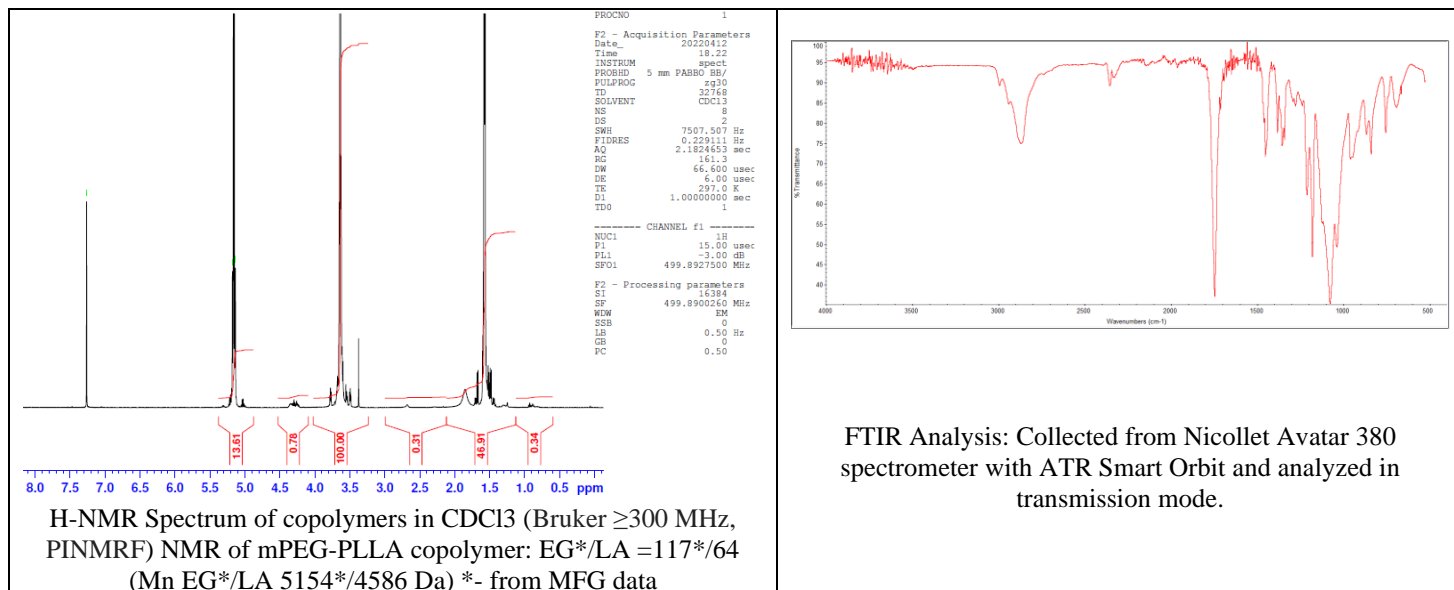


# No. AK007

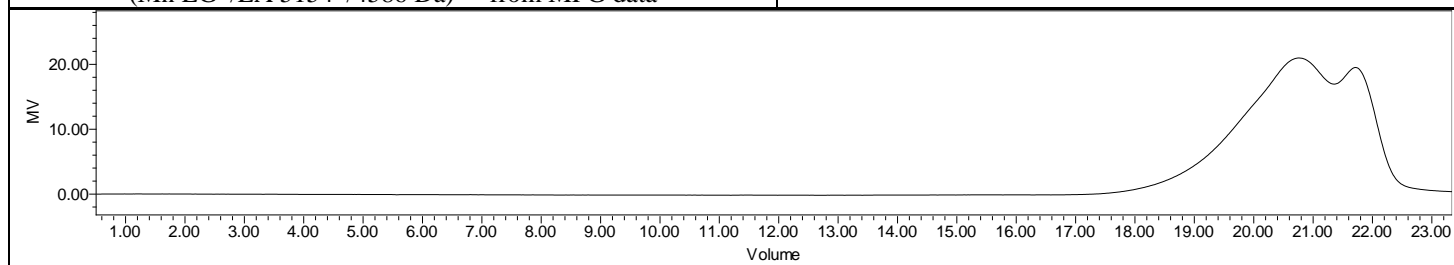
# Certificate of Analysis



Product Name: Methoxy Poly(ethylene glycol)-b-Poly(L-lactide) (5,000:4,900 Da) (Lot#: 220406RAI-A)



FTIR Analysis: Collected from Nicolet Avatar 380 spectrometer with ATR Smart Orbit and analyzed in transmission mode.



GPC-ES Analysis Method: Waters Breeze 2 system with 1 ml/min THF flow across three GPC columns. Detection via refractive index, calibrated against polystyrene standards.

Polymer	M <sub>n</sub> (from GPC)	M <sub>w</sub> (from GPC)	PDI
mPEG-PLLA	12,843	18,986	1.48
PEG precursor*		5165*	

\*- from MFG data

## • Structure of mPEG-PLLA copolymer

