

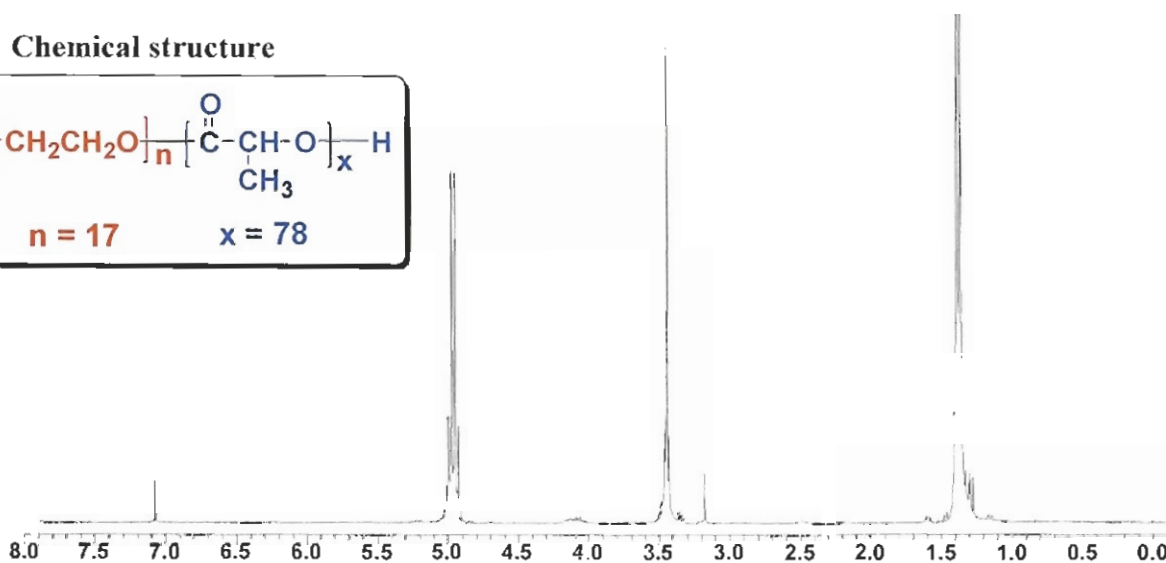
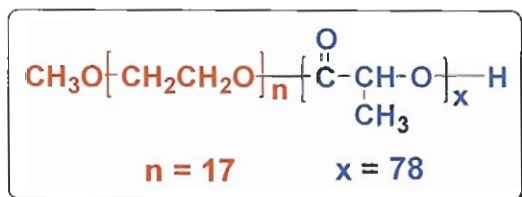
# No. 6

# Certificate of Analysis

Product name : Methoxy Poly(ethylene glycol)-*b*-Poly(L-lactide) copolymers

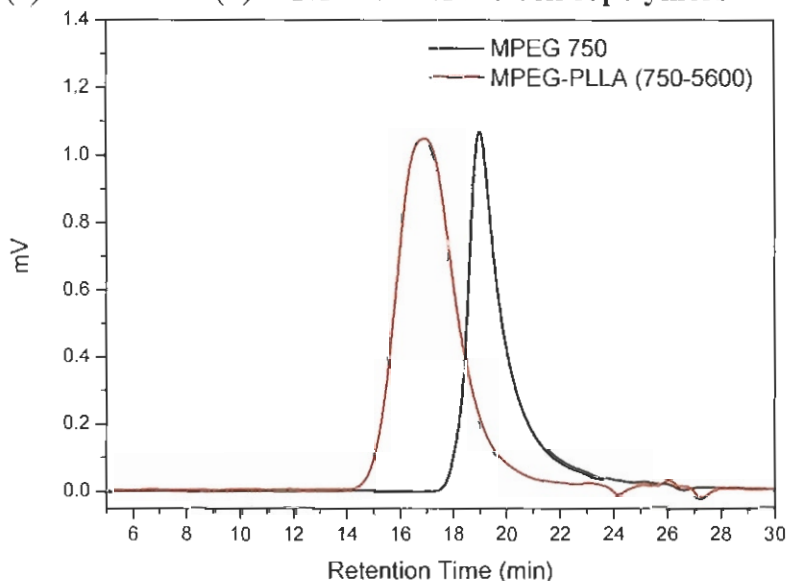
- <sup>1</sup>H-NMR spectrum of MPEG-PLLA diblock copolymers in CDCl<sub>3</sub> (Bruker 300 MHz instrument).

Chemical structure



$M_{n, \text{NMR}}$  of MPEG-PLLA copolymers : 750-5600

- GPC curve of (a) MPEG and (b) MPEG-PLLA diblock copolymers.



Analysis method : Futecs At-3000 GPC system (Shodex RI-71 detector)  
 columns (Shodex K-802 and Shodex Asahipak GF-510)  
 elution solvent (CHCl<sub>3</sub>), flow rate (0.8 mL/min)

Name	$M_n$ (GPC)	$M_w$ (GPC)	$M_w/M_n$ (PDI)
MPEG (Initiator)	1088	1184	1.08
MPEG-PLLA (Copolymer)	5929	8398	1.41