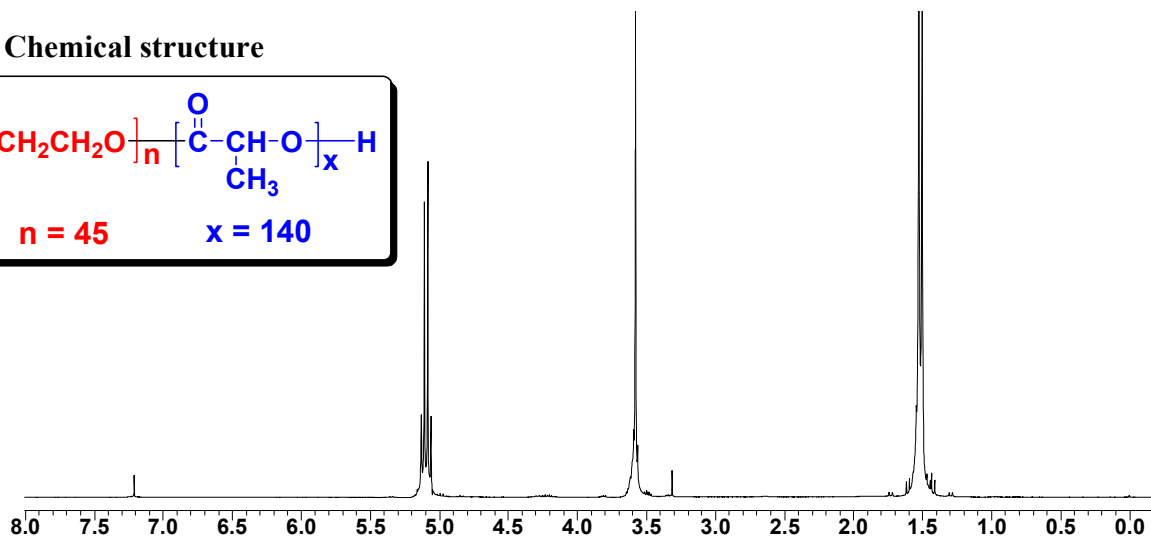
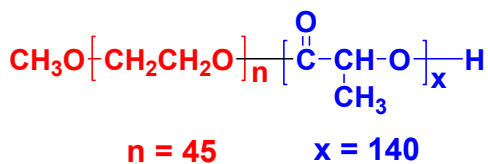


No. 5 Batch 1 Certificate of Analysis

Product name : Methoxy Poly(ethylene glycol)-*b*-Poly(L-lactide) copolymers

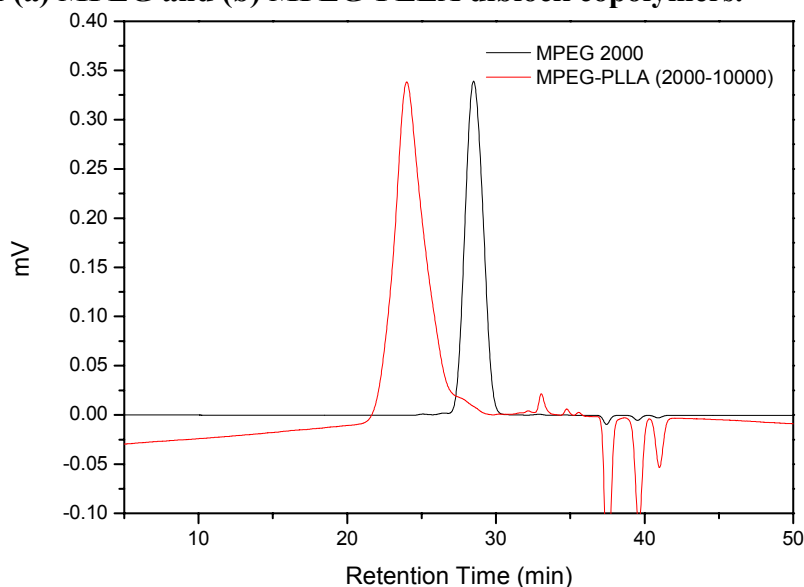
- ¹H-NMR spectrum of MPEG-PLLA diblock copolymers in CDCl₃ (Bruker 300 MHz instrument).

Chemical structure



$M_{n, \text{NMR}}$ of MPEG-PLLA copolymers : 2000-10,000

- GPC curve of (a) MPEG and (b) MPEG-PLLA diblock copolymers.



Analysis method : Futecs At-4000 GPC system (Shodex RI-101 detector)
columns (Shodex KF-802, KF-803 and KF-804)
elution solvent (THF), flow rate (0.8 mL/min)

Name	M_n (GPC)	M_w (GPC)	M_w/M_n (PDI)
MPEG (Initiator)	2765	3021	1.09
MPEG-PLLA (Copolymer)	17373	22212	1.30