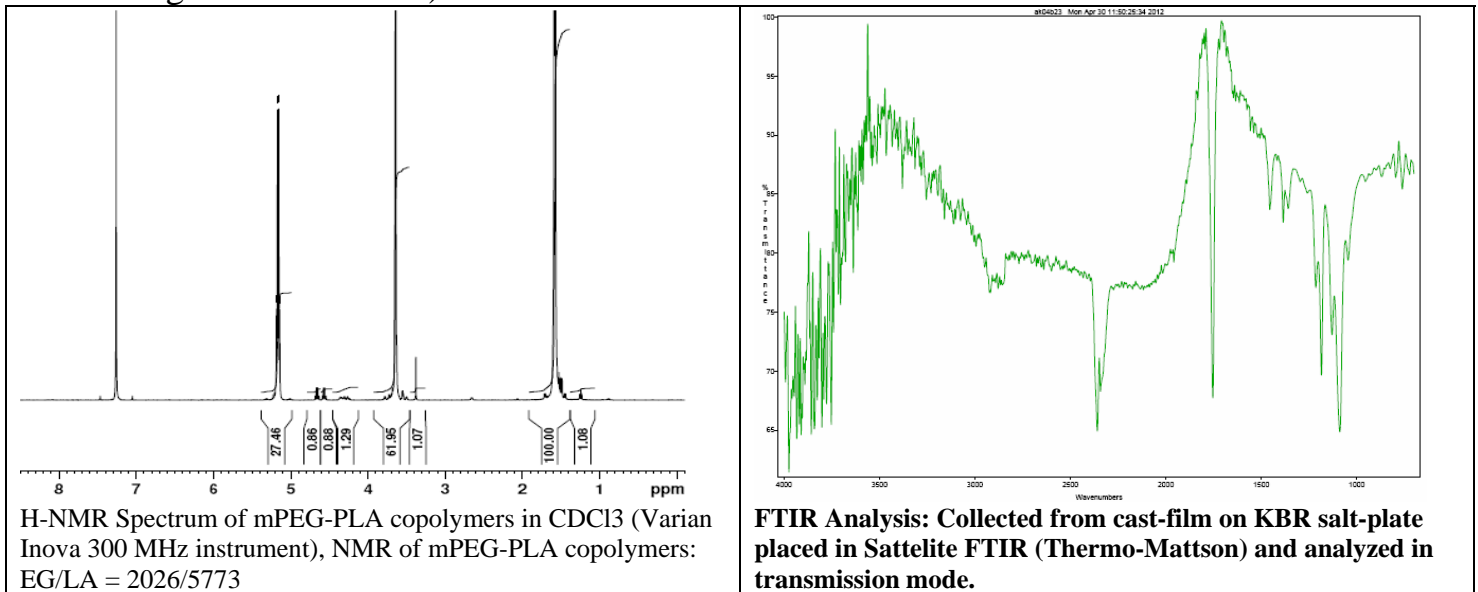
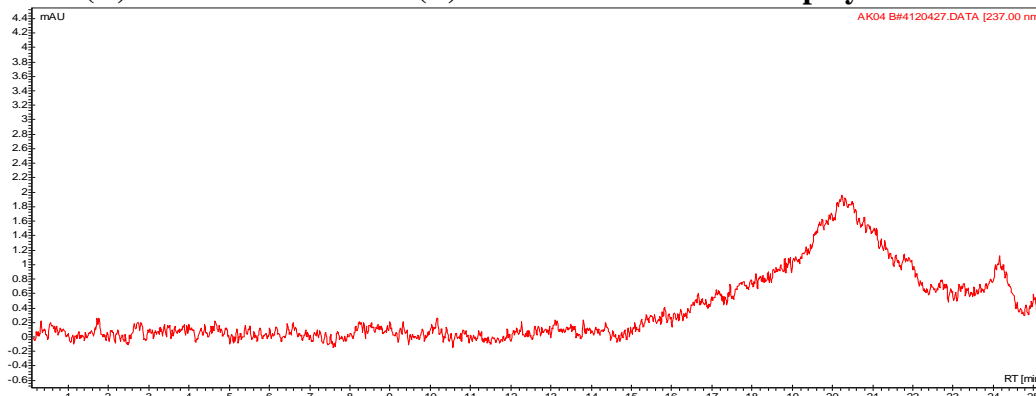


No. AK04 B#2 Certificate of Analysis

Product Name: Methoxy Poly(ethylene glycol)-*b*-Poly(L)Lactic acid copolymer (nominal block weight 2000-5000Da)



- GPC analysis of (A) mPEG initiator and (B) mPEG-PLLA diblock copolymers**



Analysis Method: Varian Prostar system with 1 ml/min DCM flow across two Resipore 3 um columns (Varian) and with UV-Vis (PDA) detection. Calibrated against polystyrene standards

Polymer	Mn (from GPC)	Mw (from GPC)	PDI
MPEG(2000) Initiator*	1927	2084	1.08
AK24 B#2	8395	18170	2.16

*data not shown, analyzed on an Agilent 1100 system with 1 ml/min THF flow across three PLgel 5 um MIXED-D and -E columns (Agilent) and RI detector.

- Structure of mPEG-PLLA diblock copolymers**

