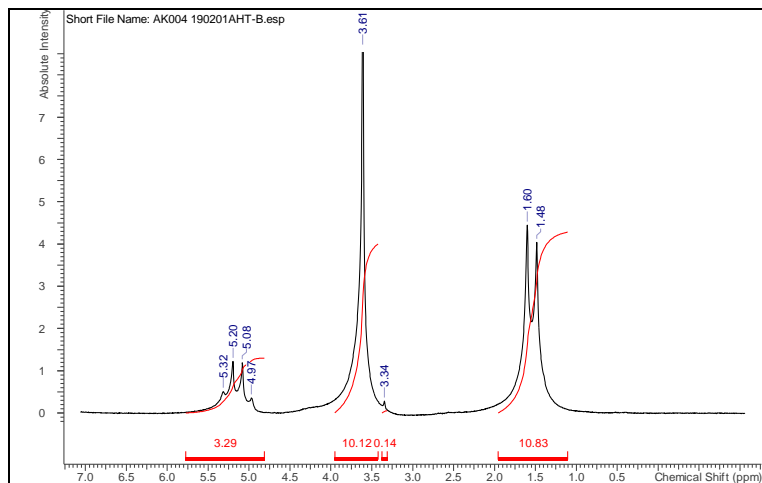


No. AK004

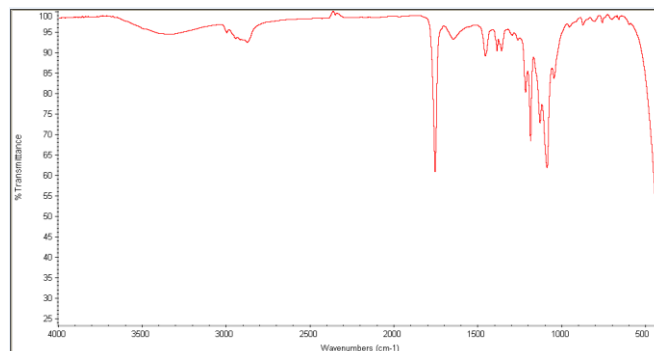
Certificate of Analysis



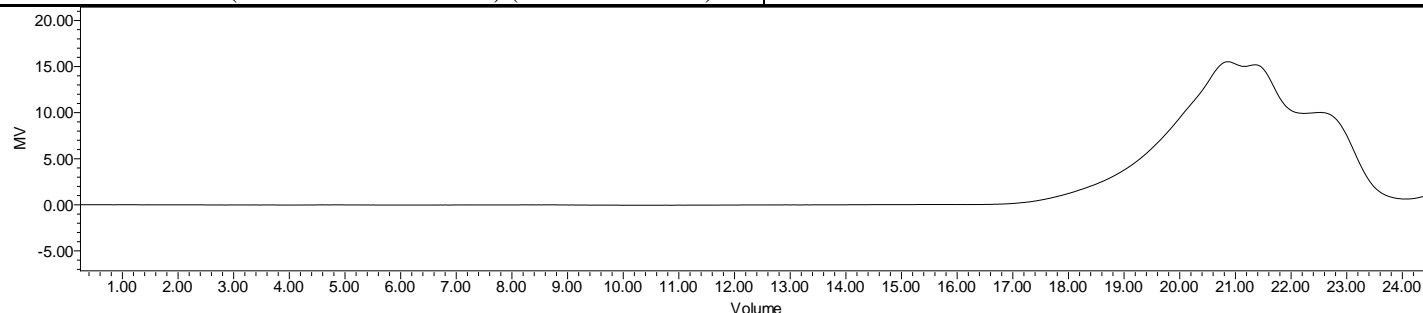
Product Name: Methoxy-Poly(ethylene glycol)-*b*-Poly(L)Lactide copolymer (Mw ~2000-5000Da) (Lot #190201AHT-B)



H-NMR Spectrum of copolymers in CDCl₃ (NMReady 60e Nanalysis Instrument, 60MHz) NMR of mPEG-PLA copolymer: EG/LA =46*-60 (Mn EG/LA 2026*/4307) (* - MFG nominal)



FTIR Analysis: Collected from cast-film on KBr salt-plate placed in Nicolet Avatar 320 spectrometer and analyzed in transmission mode.



GPC Analysis Method: Waters Breeze 2 system with 1 ml/min THF flow across three GPC columns. Detection via refractive index, calibrated against polystyrene standards.

Polymer	M _n (from GPC)	M _w (from GPC)	PDI
mPEG-PLA	8100	15590	1.92
mPEG*	1951*		

*- from MFG data

• Structure of mPEG-PLLA diblock copolymers

